

CERTIFICATE OF LOCATION OF GOVERNMENT CORNER

County of Anoka

State of Minnesota

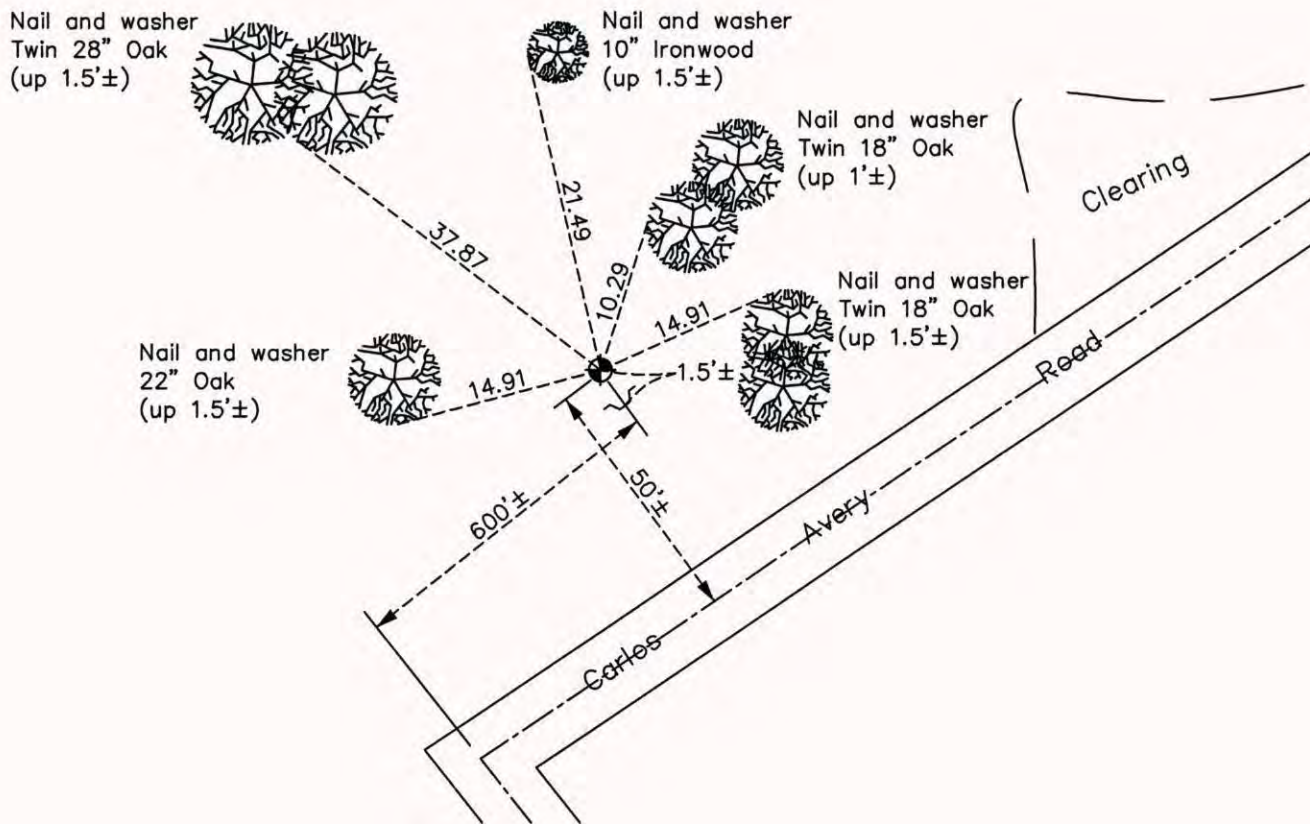
Witness Corner of Sec. 19 Township 32 Range 22
 (on north line of NW 1/4)

On the 20th day of September, 1988, the described corner was evidenced by a 3/4" iron rod set by MN DNR

and to perpetuate the location of said corner, at the exact location thereof, a permanent marker was placed consisting of a cast iron monument with a sign and post on the southeast side

AND on the 24th day of September, 2014, said permanent marker was found and the ties were updated

Updated reference ties are as shown below.



N
W ANOKA COUNTY SURVEYOR E
S

Revision Date
6/24/15

N.A.D. 1983 Coordinates
(1996 Adjustment)

County Project Coordinates	
Northing	179902.2762
Easting	532767.0135
Date	3/04/02

I hereby certify that this United States public land survey monument record is correct and complete to the best of my knowledge and belief.

Larry D. Hoium Date 6/24/15

Larry D. Hoium, Anoka County Surveyor
Minnesota License Number 18165