

CERTIFICATE OF LOCATION OF GOVERNMENT CORNER

County of Anoka

State of Minnesota

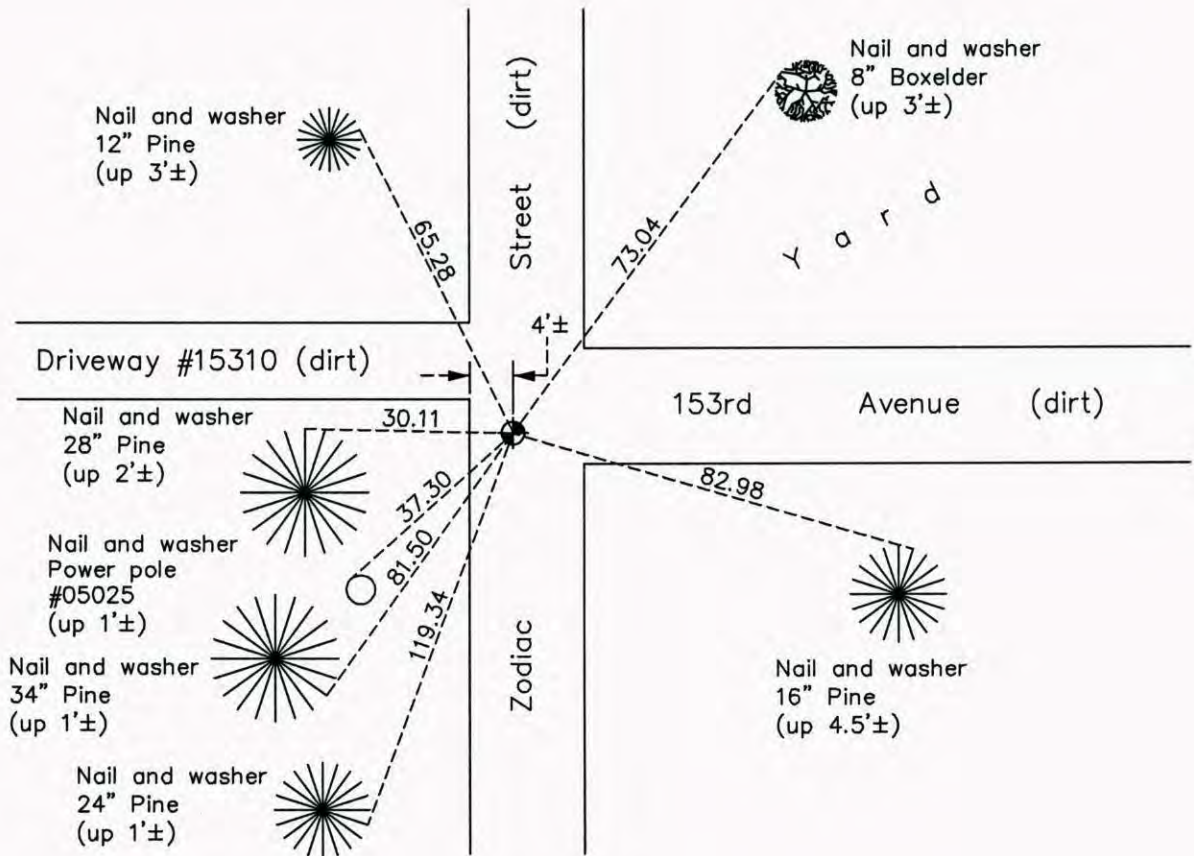
East 1/4 Corner of Sec. 20 Township 32 Range 22

On the 19th day of July, 1962, the described corner was evidenced by Cartwright
reconstruction ties

and to perpetuate the location of said corner, at the exact location thereof, a permanent marker
 was placed consisting of a cast iron monument down 1.5'±

AND on the 12th day of September, 2014, said permanent marker was found and the ties
were updated

Updated reference ties are as shown below.



Revision Date
6/24/15

N.A.D. 1983 Coordinates
 (1996 Adjustment)

County Project Coordinates	
Northing	177307.2558
Easting	542654.6762
Date	3/19/03

I hereby certify that this United States public land survey monument record is correct and complete to the best of my knowledge and belief.

Larry D. Hoium Date 6/24/15

Larry D. Hoium, Anoka County Surveyor
 Minnesota License Number 18165