

CERTIFICATE OF LOCATION OF GOVERNMENT CORNER

County of Anoka

State of Minnesota

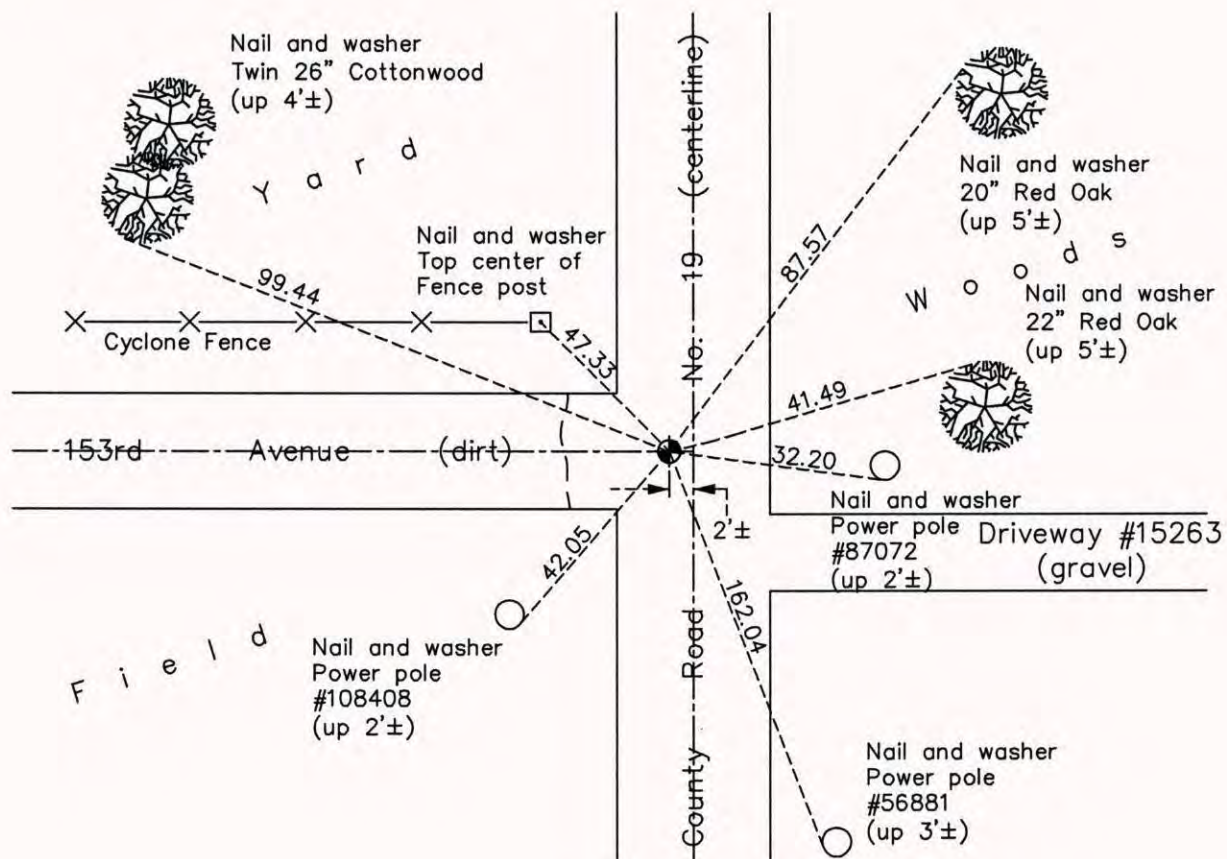
East 1/4 Corner of Sec. 21 Township 32 Range 22

On the 14th day of July, 1967, the described corner was evidenced by a 1/2" iron pipe

and to perpetuate the location of said corner, at the exact location thereof, a permanent marker was placed consisting of a cast iron monument

AND on the 14th day of October, 2014, said permanent marker was found and the ties were updated

Updated reference ties are as shown below.



N
W ANOKA COUNTY SURVEYOR E
S

Revision Date
6/29/15

N.A.D. 1983 Coordinates
(1996 Adjustment)

County Project Coordinates	
Northing	177322.7981
Easting	547908.6110
Date	6/17/03

I hereby certify that this United States public land survey monument record is correct and complete to the best of my knowledge and belief.

Larry D. Hoium Date 6/29/15

Larry D. Hoium, Anoka County Surveyor
Minnesota License Number 18165