

# CERTIFICATE OF LOCATION OF GOVERNMENT CORNER

County of Anoka

State of Minnesota

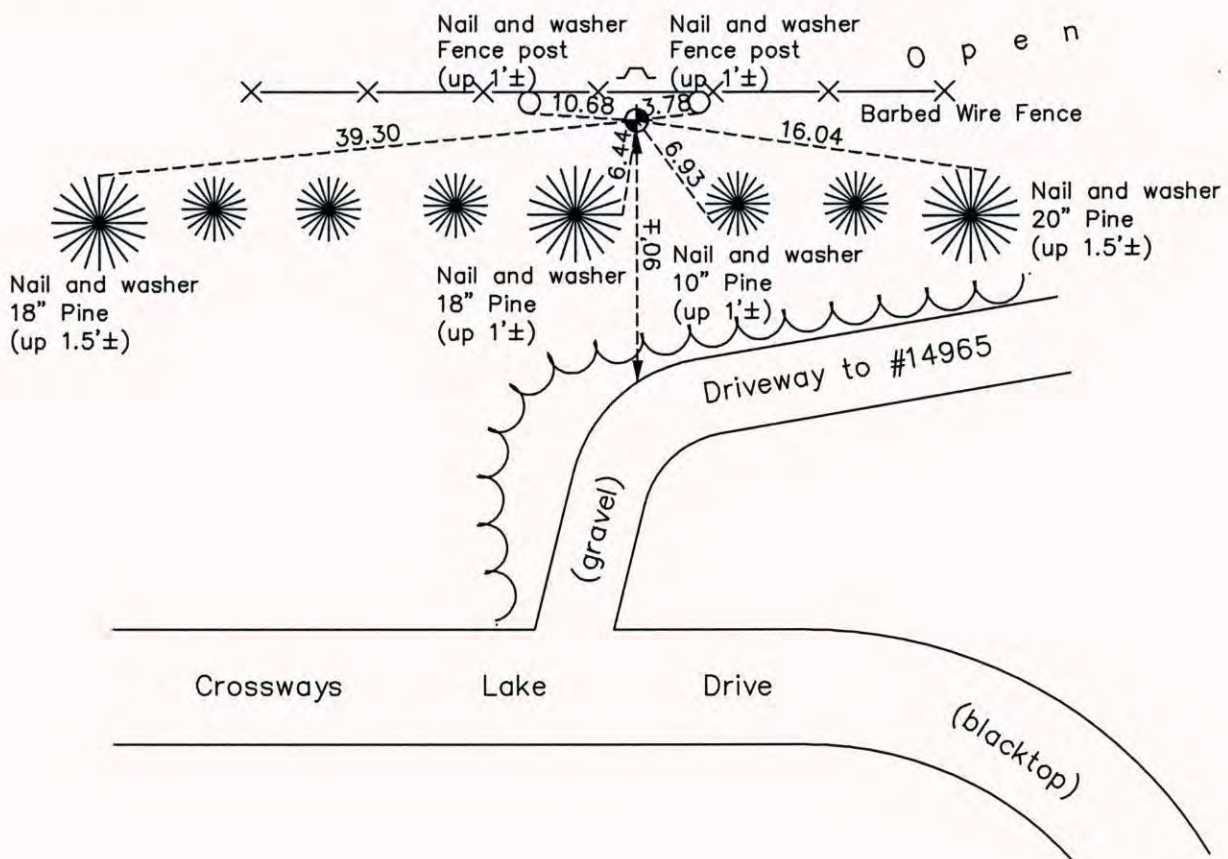
Witness Corner of Sec. 22 Township 32 Range 22  
 (on east line of SE 1/4)

On the 28th day of February, 1983, the described corner was evidenced by area resurvey

and to perpetuate the location of said corner, at the exact location thereof, a permanent marker was placed consisting of a cast iron monument with a sign and post on the north side

AND on the 23rd day of September, 2014, said permanent marker was found and the ties were updated

Updated reference ties are as shown below.



Revision Date  
6/29/15

N.A.D. 1983 Coordinates  
 (1996 Adjustment)

County Project Coordinates	
Northing	176047.6514
Easting	553207.0782
Date	1/26/06

I hereby certify that this United States public land survey monument record is correct and complete to the best of my knowledge and belief.  
  
 Date 6/29/15  
 Larry D. Hoium, Anoka County Surveyor  
 Minnesota License Number 18165