

CERTIFICATE OF LOCATION OF GOVERNMENT CORNER

County of Anoka

State of Minnesota

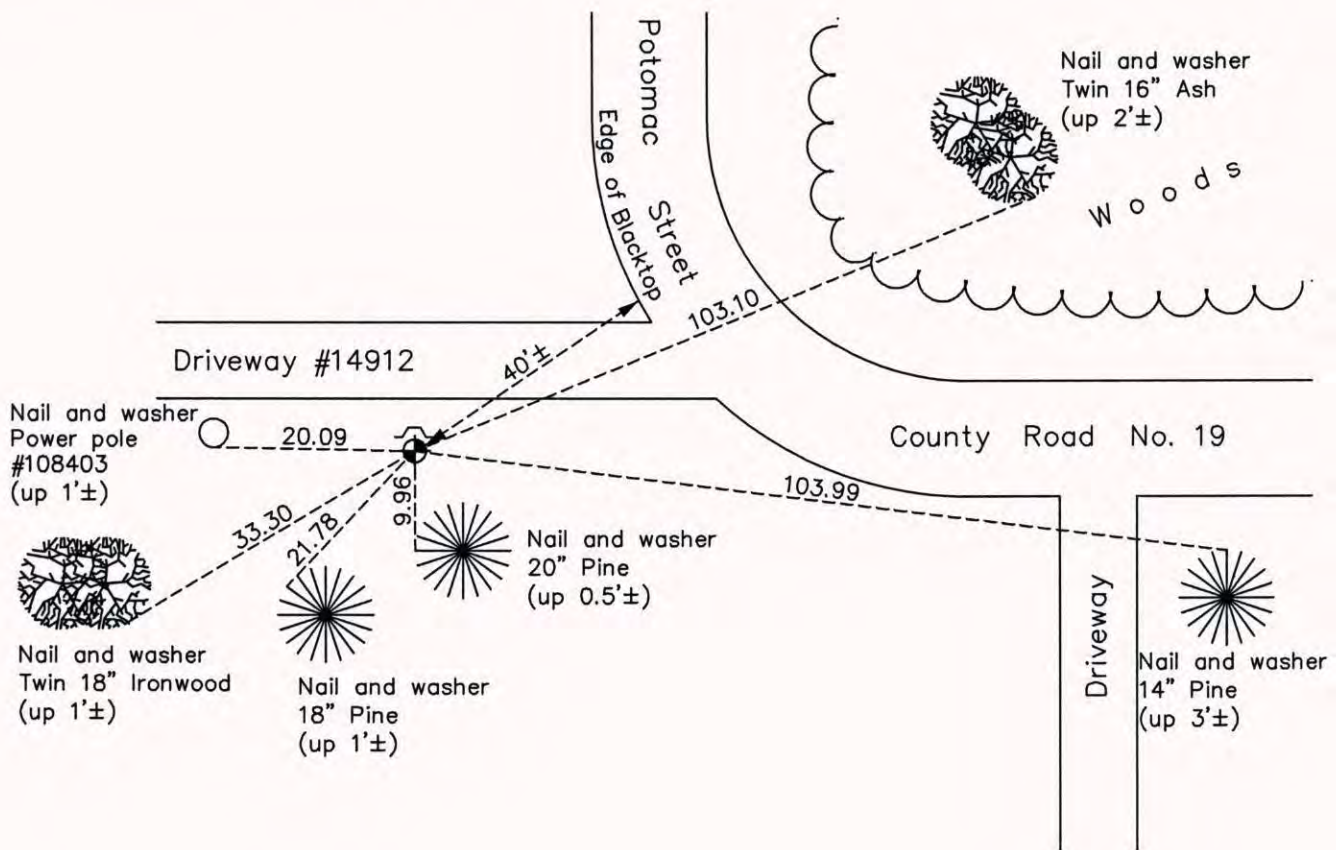
Southwest Corner of Sec. 22 Township 32 Range 22

On the 6th day of December, 1963, the described corner was evidenced by a well point

and to perpetuate the location of said corner, at the exact location thereof, a permanent marker was placed consisting of a cast iron monument with a steel "T" post 0.5'± north of CIM

AND on the 23rd day of September, 2014, said permanent marker was found and the ties were updated

Updated reference ties are as shown below.



N
W ANOKA COUNTY SURVEYOR E
S

Revision Date
7/08/15

N.A.D. 1983 Coordinates
(1996 Adjustment)

County Project Coordinates	
Northing	174666.2309
Easting	547936.2411
Date	6/16/03

I hereby certify that this United States public land survey monument record is correct and complete to the best of my knowledge and belief.

Larry D. Hoium Date 7/08/15

Larry D. Hoium, Anoka County Surveyor
Minnesota License Number 18165