

CERTIFICATE OF LOCATION OF GOVERNMENT CORNER

County of Anoka

State of Minnesota

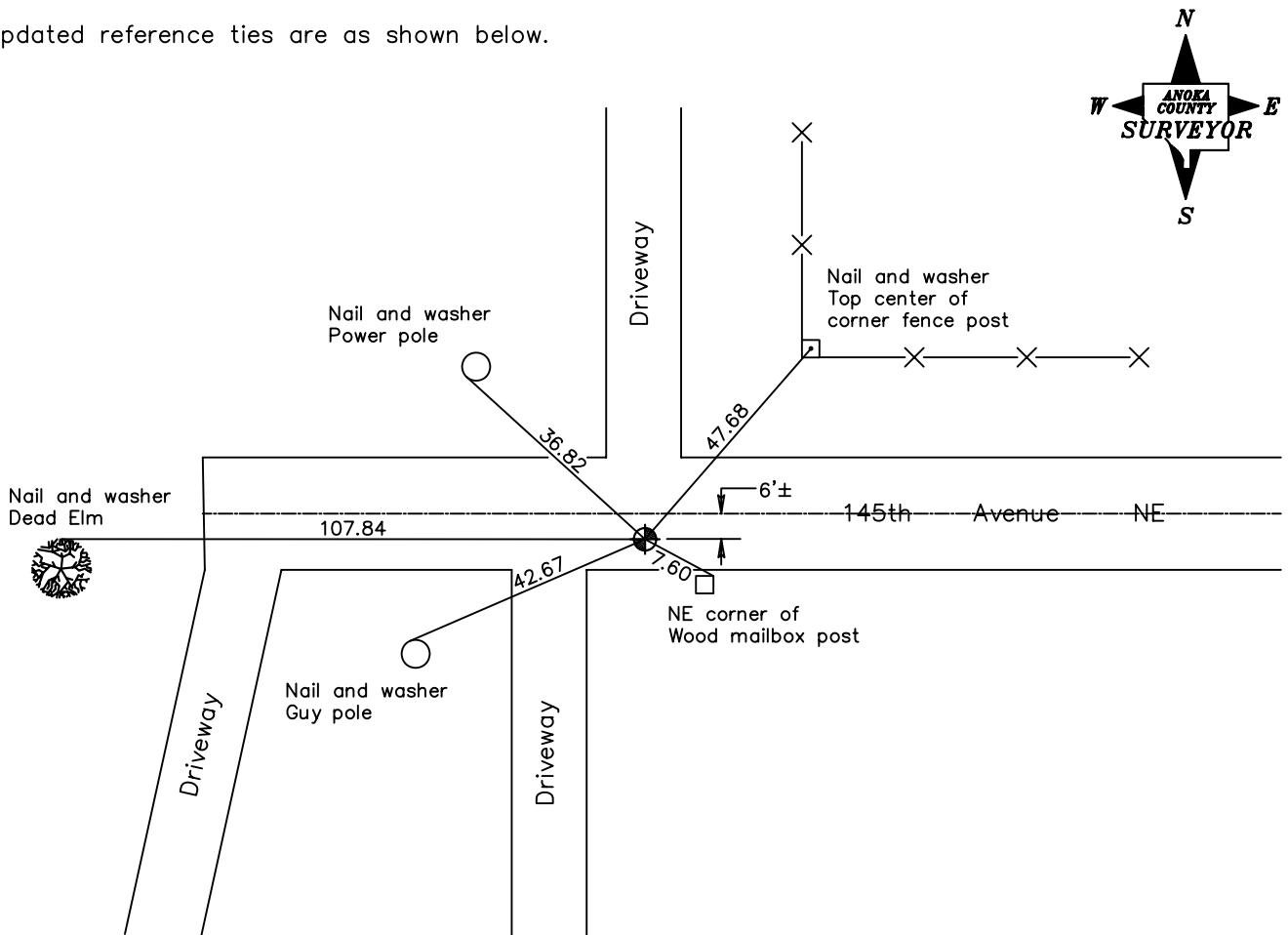
East 1/4 Corner of Sec. 29 Township 32 Range 22

On the 18th day of September, 1964, the described corner was evidenced by a broken off concrete monument

and to perpetuate the location of said corner, at the exact location thereof, a permanent marker was placed consisting of a cast iron monument down 1.5'±

AND on the ___ day of _____, _____, said permanent marker was _____

Updated reference ties are as shown below.



Revised date

| |
|---------|
| 8/05/85 |
| 8/25/89 |
| 8/24/95 |
| |
| |

**N.A.D. 1983 Coordinates
(1996 Adjustment)**

| | |
|----------------------------|--------------------|
| County Project Coordinates | |
| Northing | <u>172025.9123</u> |
| Easting | <u>542668.6580</u> |
| Date | <u>6/24/03</u> |

I hereby certify that this United States public land survey monument record is correct and complete to the best of my knowledge and belief.

_____ Date _____
 _____, Anoka County Surveyor
 Minnesota License Number _____