

CERTIFICATE OF LOCATION OF GOVERNMENT CORNER

County of Anoka

State of Minnesota

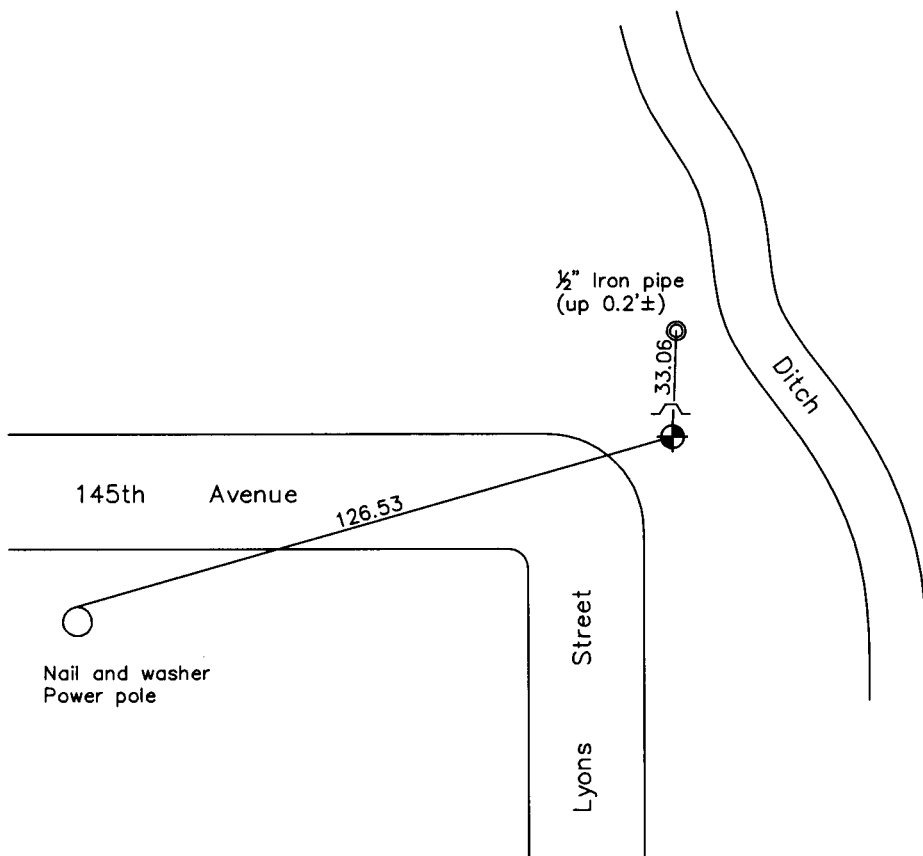
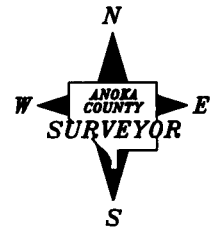
East 1/4 Corner of Sec. 25 Township 32 Range 22

On the 18th day of September, 1964, the described corner was evidenced by a 3/4" iron pipe set by Don Hult

and to perpetuate the location of said corner, at the exact location thereof, a permanent marker was placed consisting of a cast iron monument with a sign and post on the north side

AND on the 8th day of April, 2008, said permanent marker was found broken off and two ties were remaining. A new monument will be set at a later date.

Updated reference ties are as shown below.



Revised date
11/30/92
8/25/95
4/08/08

N.A.D. 1983 Coordinates (1996 Adjustment)	
County Project Coordinates	
Northing	<u>171999.9818</u>
Easting	<u>563702.7194</u>
Date	<u>6/26/03</u>

I hereby certify that this United States public land survey monument record is correct and complete to the best of my knowledge and belief.

Date 4/08/08
Larry D. Hoium, Anoka County Surveyor
 Minnesota License Number 18165