

CERTIFICATE OF LOCATION OF GOVERNMENT CORNER

County of Anoka

State of Minnesota

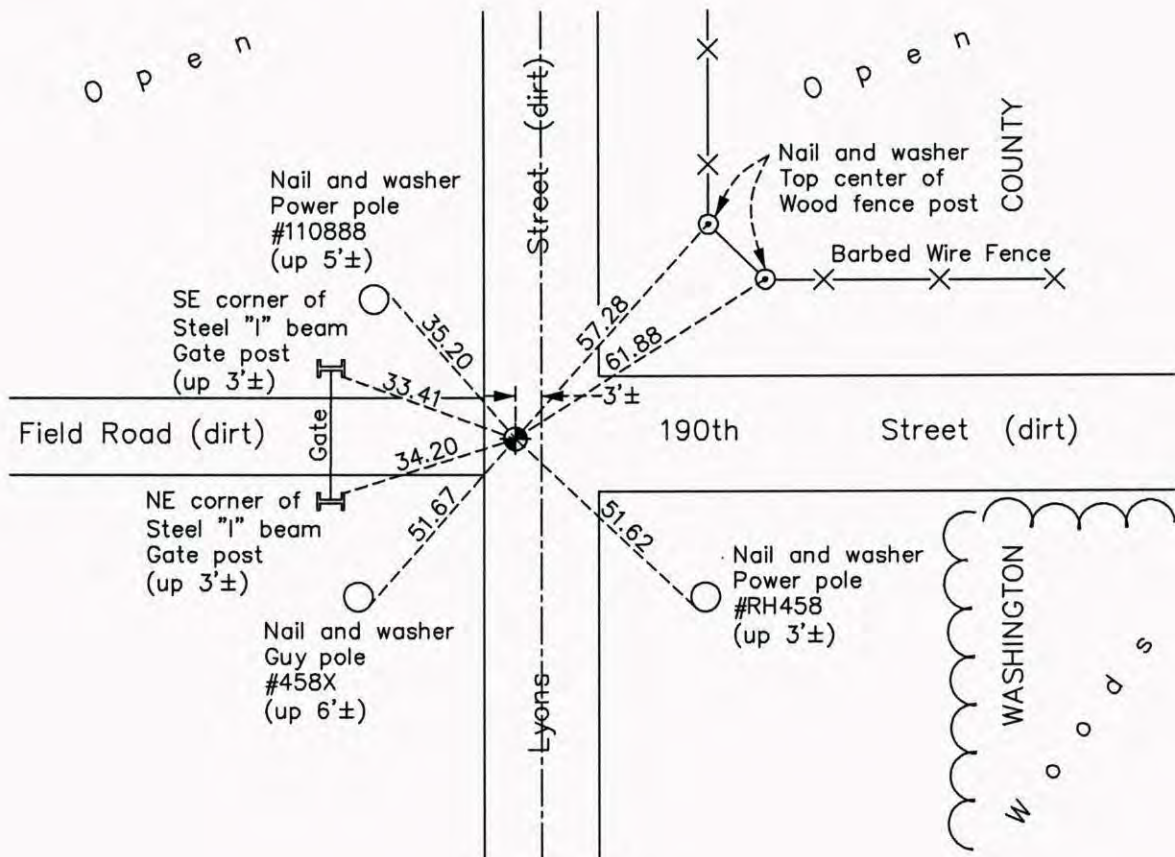
Northeast Corner of Sec. 36 Township 32 Range 22

On the 4th day of June, 1964, the described corner was evidenced by a bent 1" iron pipe

and to perpetuate the location of said corner, at the exact location thereof, a permanent marker was placed consisting of a cast iron monument down 2'±

AND on the 17th day of September, 2014, said permanent marker was found down 1'± and the ties were updated

Updated reference ties are as shown below.



N
W ANOKA COUNTY SURVEYOR E
S

Revision Date
7/13/15

N.A.D. 1983 Coordinates
(1996 Adjustment)

County Project Coordinates	
Northing	169367.1942
Easting	563657.0913
Date	6/18/03

I hereby certify that this United States public land survey monument record is correct and complete to the best of my knowledge and belief.

Larry D. Hoium Date 7/13/15

Larry D. Hoium, Anoka County Surveyor
Minnesota License Number 18165