

CERTIFICATE OF LOCATION OF GOVERNMENT CORNER

County of Anoka

State of Minnesota

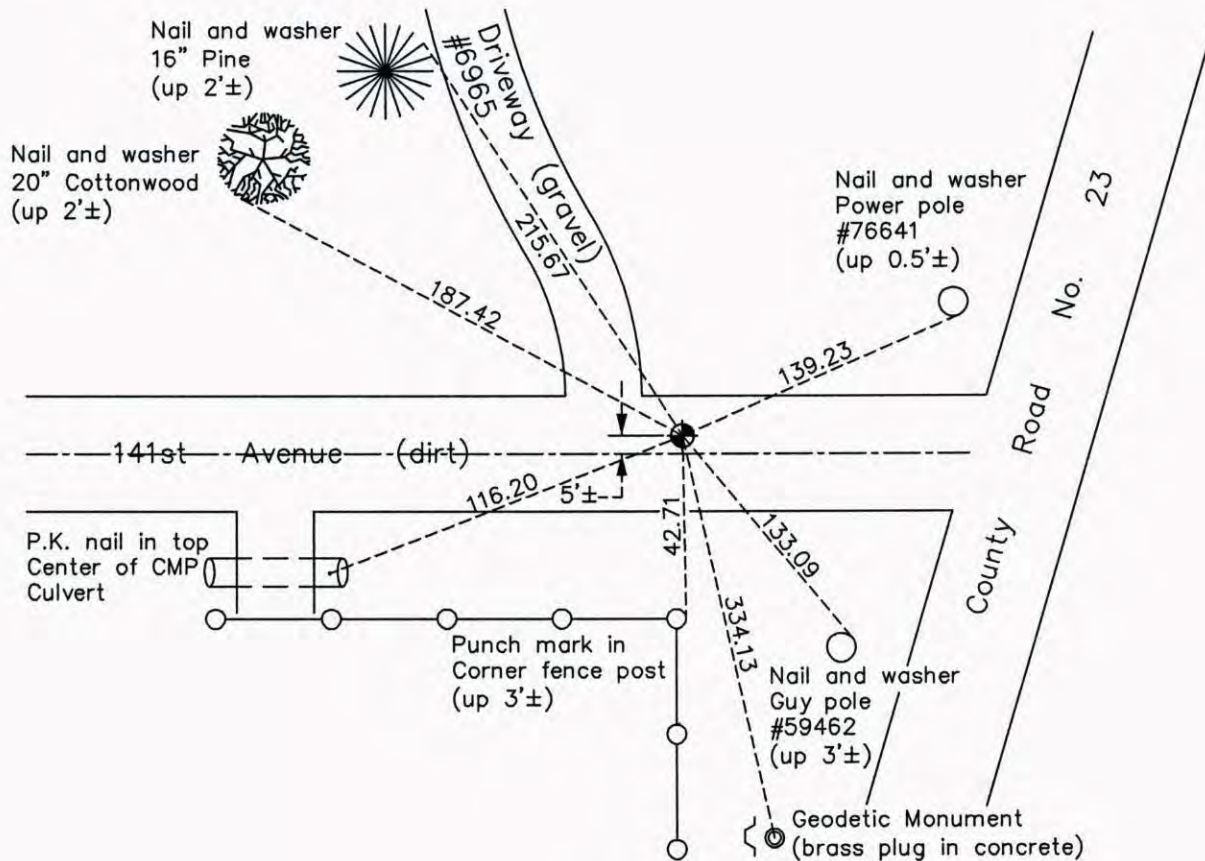
South 1/4 Corner of Sec. 28 Township 32 Range 22

On the 14th day of August, 1970, the described corner was evidenced by a 1 1/4" iron pipe

and to perpetuate the location of said corner, at the exact location thereof, a permanent marker was placed consisting of a cast iron monument down 2'±

AND on the 11th day of September, 2014, said permanent marker was found down 1.5'± and the ties were updated

Updated reference ties are as shown below.



Revision Date
7/21/15

N.A.D. 1983 Coordinates
(1996 Adjustment)

County Project Coordinates	
Northing	<u>169394.2739</u>
Easting	<u>545319.8554</u>
Date	<u>6/24/03</u>

I hereby certify that this United States public land survey monument record is correct and complete to the best of my knowledge and belief.

Larry D. Hoium Date 7/21/15

Larry D. Hoium, Anoka County Surveyor

Minnesota License Number 18165