

CERTIFICATE OF LOCATION OF GOVERNMENT CORNER

County of Anoka

State of Minnesota

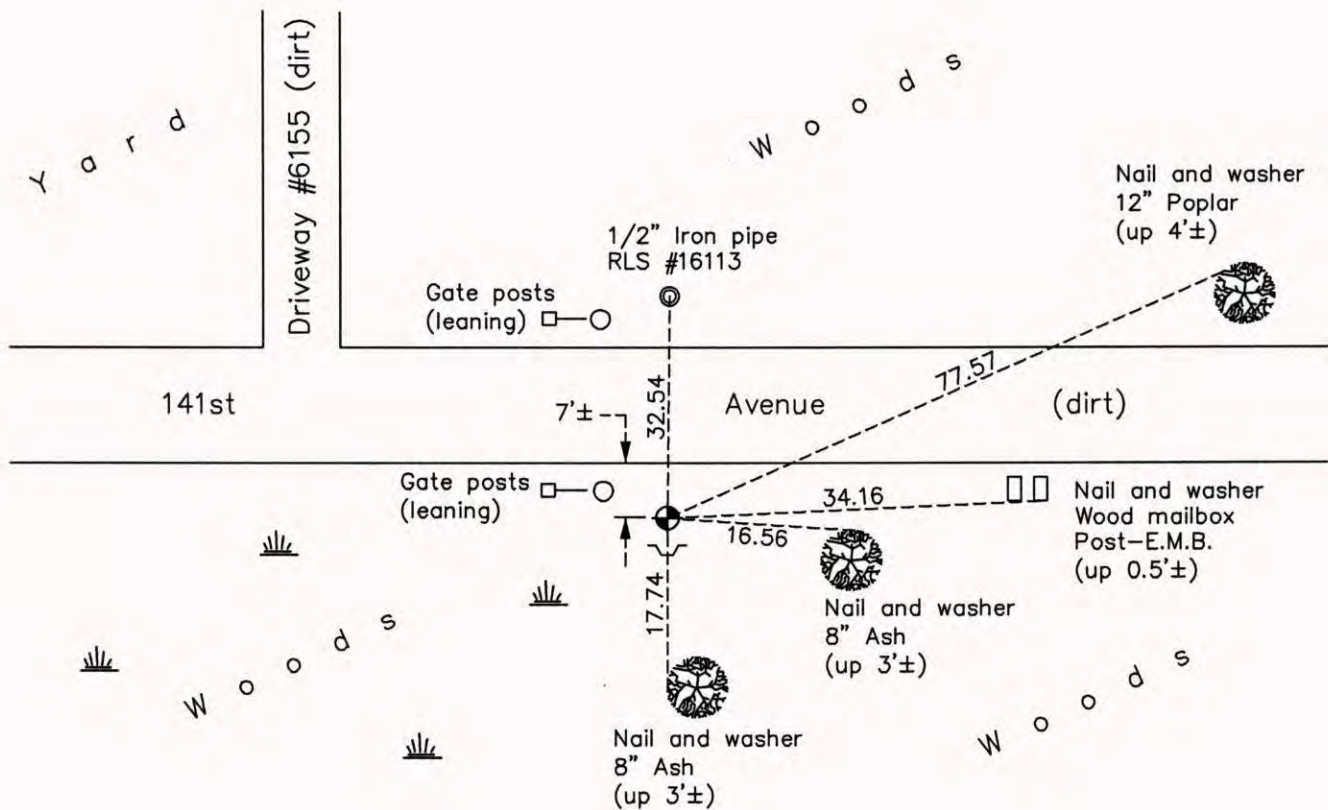
South $\frac{1}{4}$ Corner of Sec. 29 Township 32 Range 22

On the 12th day of January, 1979, the described corner was evidenced by a 1/2" iron pipe

and to perpetuate the location of said corner, at the exact location thereof, a permanent marker was placed consisting of a cast iron monument with a sign and post on the south side

AND on the 11th day of September, 2014, said permanent marker was found and the ties were updated

Updated reference ties are as shown below.



Revision Date
7/22/15

N.A.D. 1983 Coordinates
(1996 Adjustment)

County Project Coordinates	
Northing	169377.1635
Easting	540051.2013
Date	6/16/03

I hereby certify that this United States public land survey monument record is correct and complete to the best of my knowledge and belief.

Larry D. Hoium Date 7/22/15

Larry D. Hoium, Anoka County Surveyor
Minnesota License Number 18165