

# CERTIFICATE OF LOCATION OF GOVERNMENT CORNER

County of Anoka

State of Minnesota

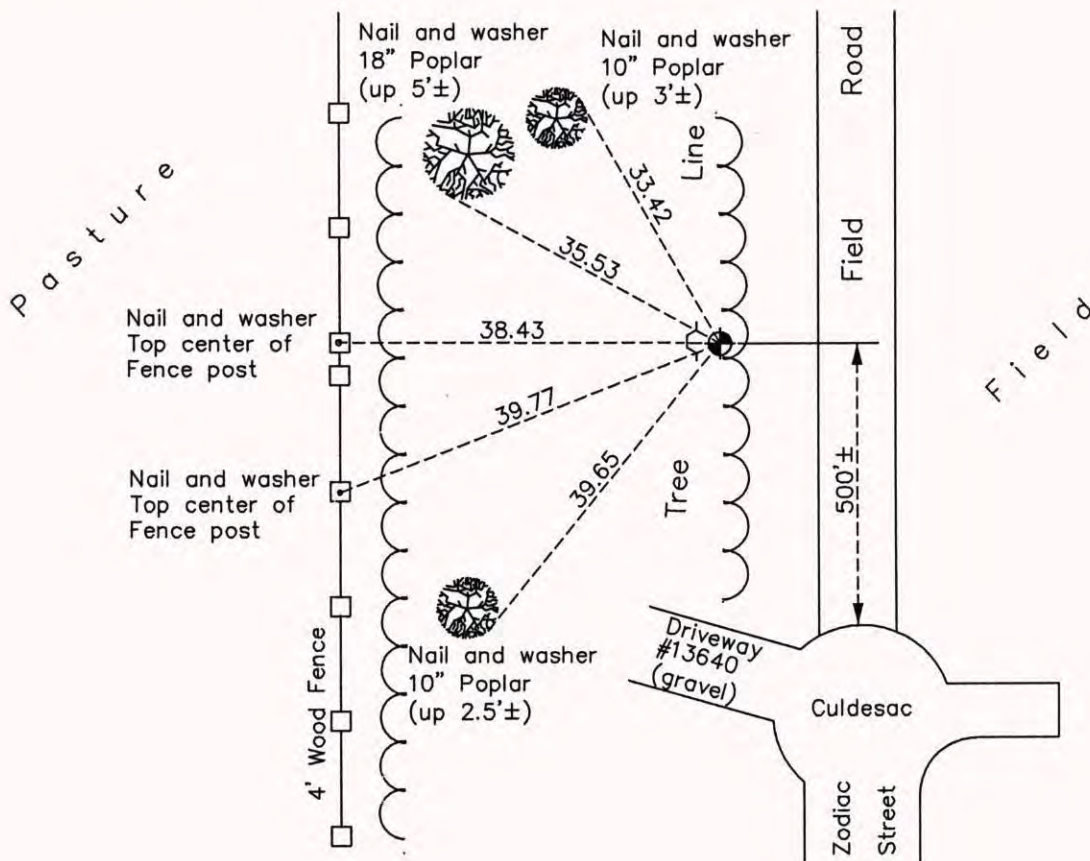
## West 1/4 Corner of Sec. 33 Township 32 Range 22

On the 12th day of May, 1977, the described corner was evidenced by area resurvey

and to perpetuate the location of said corner, at the exact location thereof, a permanent marker was placed consisting of a cast iron monument with a sign and post on the west side

AND on the 24th day of September, 2014, said permanent marker was found down 1'± and the ties were updated

Updated reference ties are as shown below.



Revision Date  
7/27/15

N.A.D. 1983 Coordinates  
(1996 Adjustment)

County Project Coordinates	
Northing	166742.2236
Easting	542660.3984
Date	5/13/04

I hereby certify that this United States public land survey monument record is correct and complete to the best of my knowledge and belief.

*Larry D. Hoium* Date 7/27/15

Larry D. Hoium, Anoka County Surveyor

Minnesota License Number 18165