

CERTIFICATE OF LOCATION OF GOVERNMENT CORNER

County of Anoka

State of Minnesota

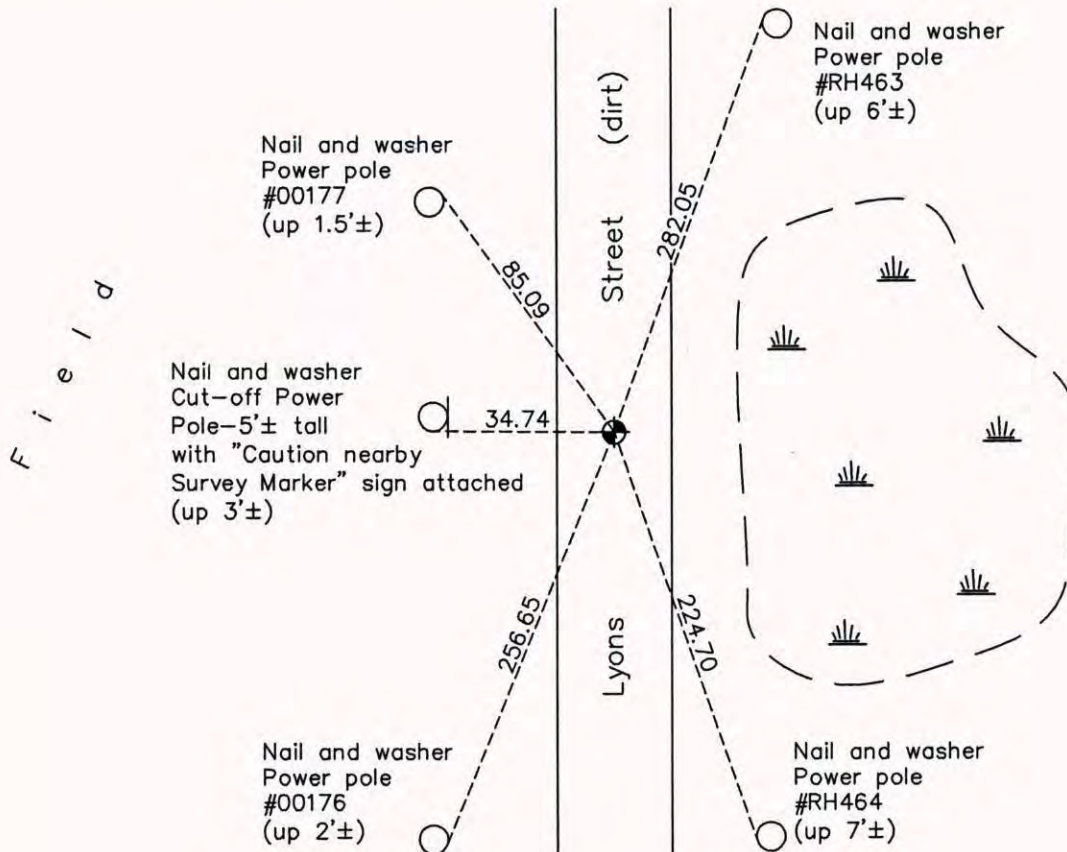
East 1/4 Corner of Sec. 36 Township 32 Range 22

On the 9th day of July, 1974, the described corner was evidenced by a 1/2" iron pipe set by D. Hult and D. Pepper

and to perpetuate the location of said corner, at the exact location thereof, a permanent marker was placed consisting of a cast iron monument down 0.5'±

AND on the 19th day of September, 2014, said permanent marker was found near centerline and the ties were updated

Updated reference ties are as shown below.



Revision Date

7/28/15

N.A.D. 1983 Coordinates
(1996 Adjustment)

County Project Coordinates	
Northing	166748.2803
Easting	563651.0535
Date	6/18/03

I hereby certify that this United States public land survey monument record is correct and complete to the best of my knowledge and belief.

Larry D. Hoium Date 7/28/15

Larry D. Hoium, Anoka County Surveyor
Minnesota License Number 18165