

CERTIFICATE OF LOCATION OF GOVERNMENT CORNER

County of Anoka

State of Minnesota

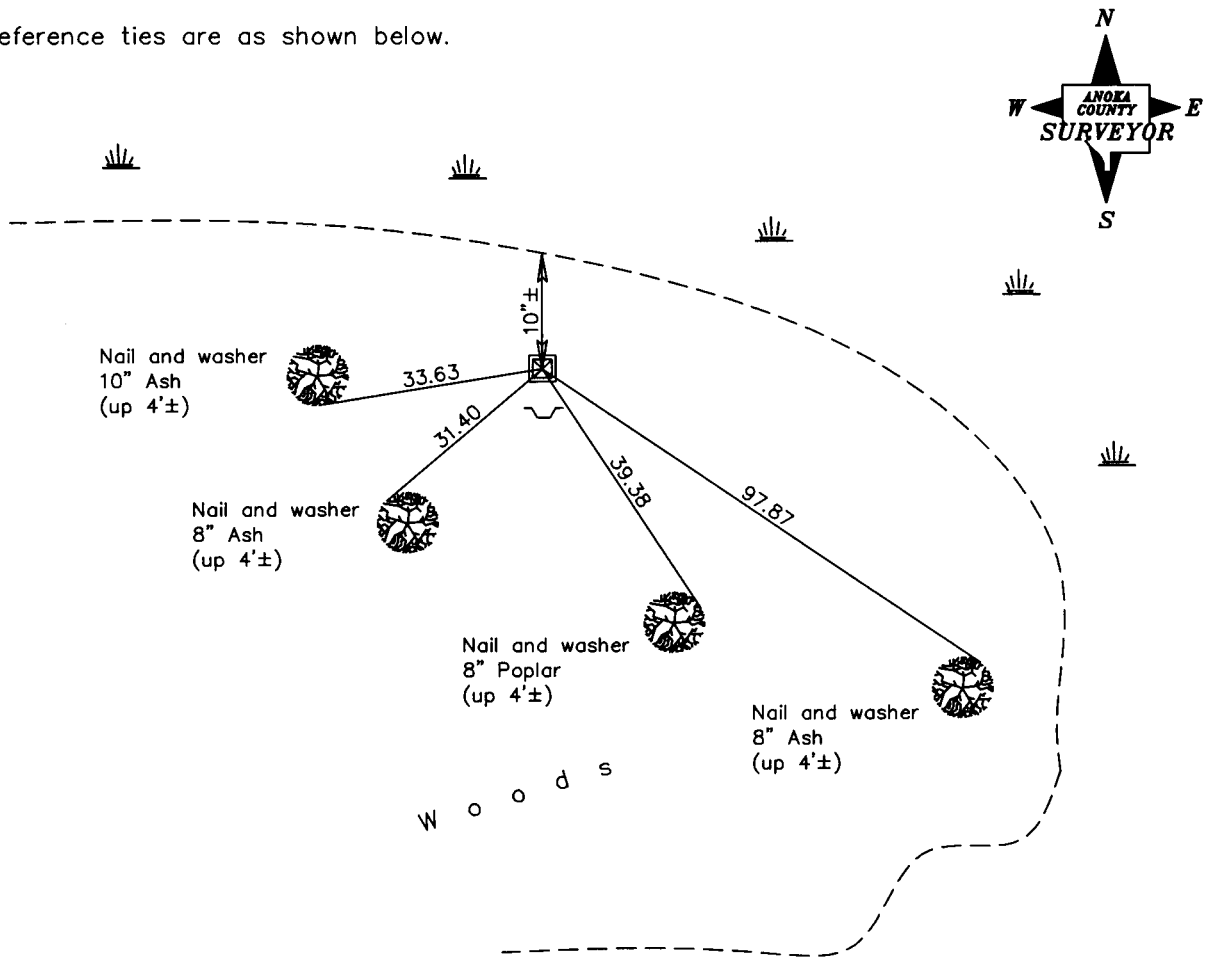
West 1/4 Corner of Sec. 17 Township 32 Range 22

On the 3rd day of March, 2009, the described corner was evidenced by area resurvey

and to perpetuate the location of said corner, at the exact location thereof, a permanent marker was placed consisting of a 2" square steel Telspar monument with a 'County Surveyor' cap and a sign and post on the south side

AND on the ___ day of _____, _____, said permanent marker was _____

Updated reference ties are as shown below.



Revised date
3/03/09

N.A.D. 1983 Coordinates (1996 Adjustment)	
County Project Coordinates	
Northing	182551.4180
Easting	537393.7411
Date	3/03/09

I hereby certify that this United States public land survey monument record is correct and complete to the best of my knowledge and belief.

Larry D. Hoium Date 3/03/09

Larry D. Hoium, Anoka County Surveyor

Minnesota License Number 18165