

CERTIFICATE OF LOCATION OF GOVERNMENT CORNER

County of Anoka

State of Minnesota

Witness Corner of Sec. 4 Township 33 Range 22

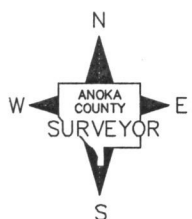
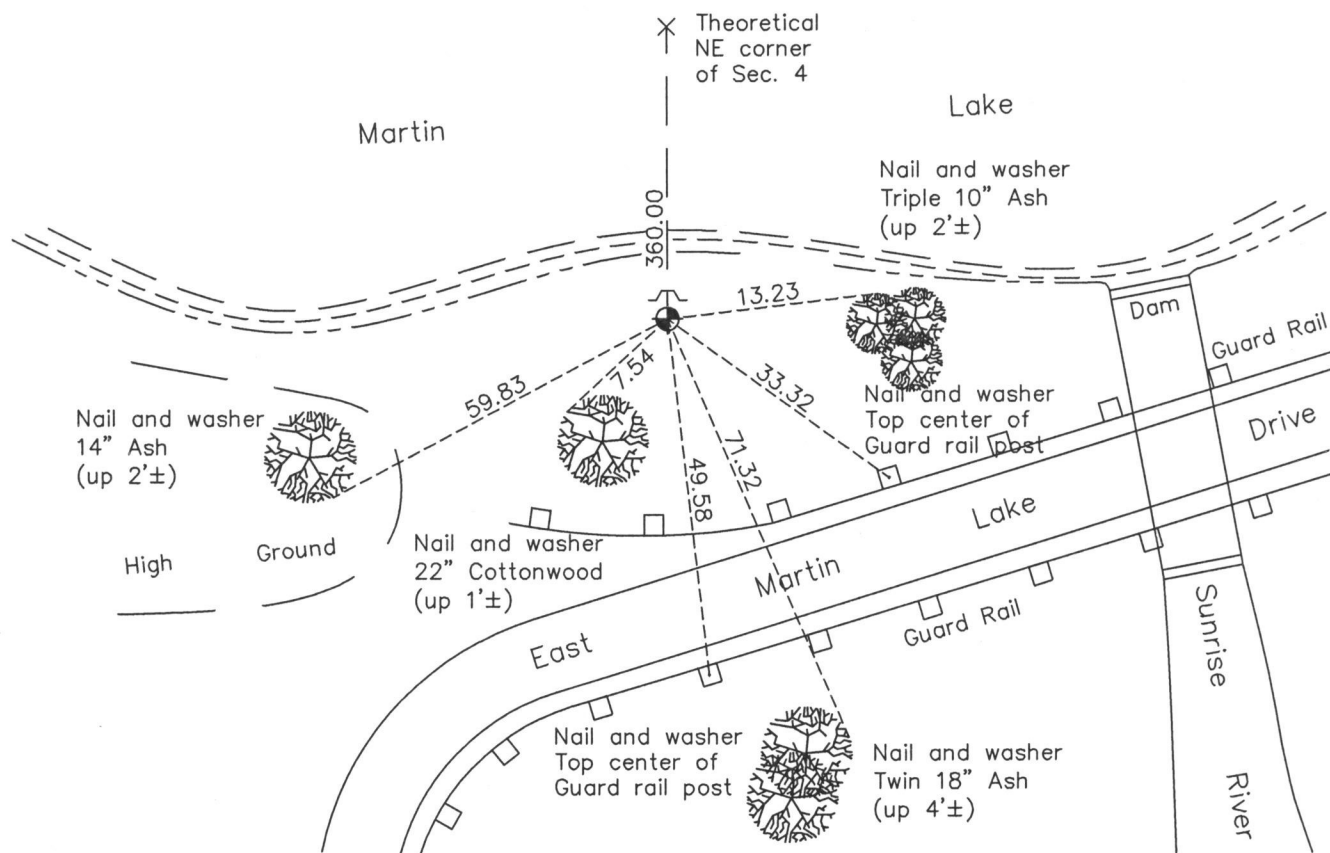
(on east line of NE 1/4)

On the 26th day of December, 1975, the described corner was evidenced by area resurvey

and to perpetuate the location of said corner, at the exact location thereof, a permanent marker was placed consisting of a cast iron monument

AND on the 19th day of November, 2013, said permanent marker was found down 1'± and the ties were updated. Set sign and post on north side of monument.

Updated reference ties are as shown below.



Revision Date

8/11/15

N.A.D. 1983 Coordinates
(1996 Adjustment)

County Project Coordinates	
Northing	<u>226875.1323</u>
Easting	<u>547990.9754</u>
Date	<u>4/01/04</u>

I hereby certify that this United States public land survey monument record is correct and complete to the best of my knowledge and belief.

Larry D. Hoium Date 8/11/15

Larry D. Hoium, Anoka County Surveyor

Minnesota License Number 18165