

# CERTIFICATE OF LOCATION OF GOVERNMENT CORNER

County of Anoka

State of Minnesota

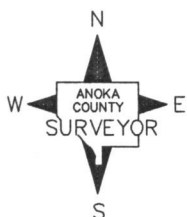
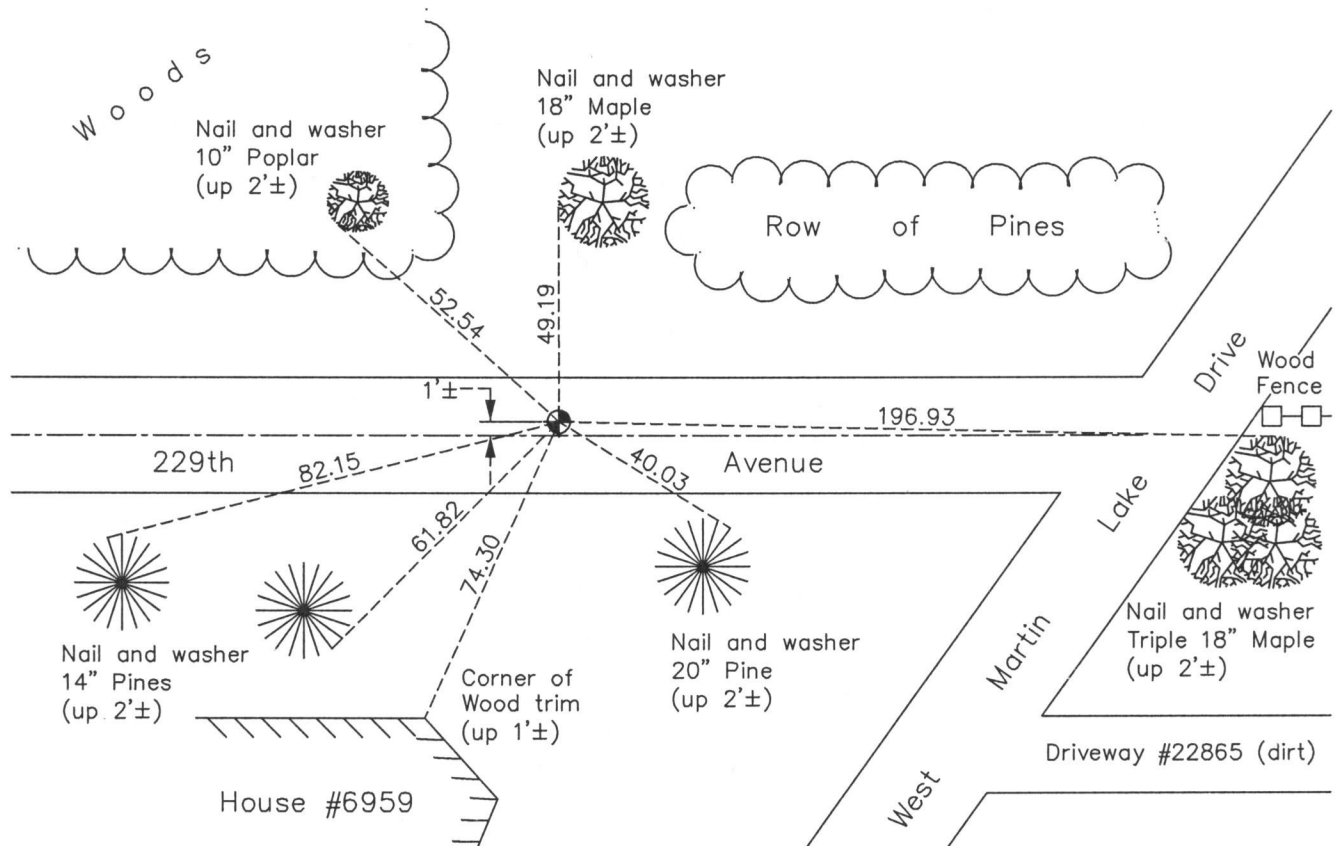
## North 1/4 Corner of Sec. 4 Township 33 Range 22

On the 6th day of February, 1963, the described corner was evidenced by a granite monument

and to perpetuate the location of said corner, at the exact location thereof, a permanent marker was placed consisting of a cast iron monument

AND on the 7th day of May, 2014, said permanent marker was found and raised  
to flush with the surface and the ties were updated

Updated reference ties are as shown below.



Revision Date  
8/13/15

N.A.D. 1983 Coordinates  
(1996 Adjustment)

County Project Coordinates	
Northing	227410.4226
Easting	545376.1615
Date	6/05/03

I hereby certify that this United States public land survey monument record is correct and complete to the best of my knowledge and belief.

*Larry D. Hoium* Date 8/13/15

Larry D. Hoium, Anoka County Surveyor  
Minnesota License Number 18165