

# CERTIFICATE OF LOCATION OF GOVERNMENT CORNER

County of Anoka

State of Minnesota

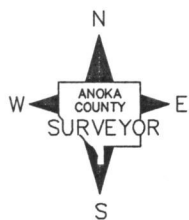
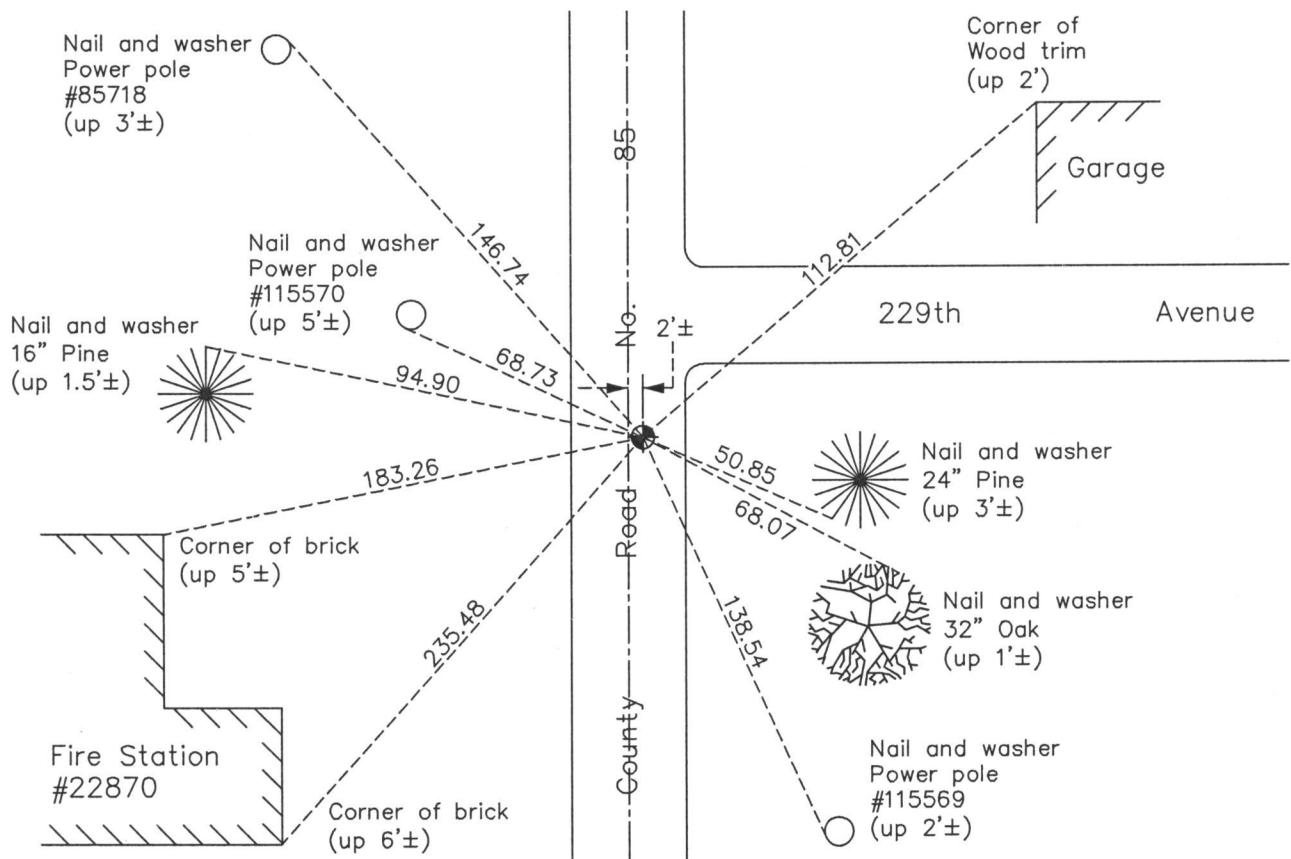
## Northwest Corner of Sec. 4 Township 33 Range 22

On the 27th day of February, 1961, the described corner was evidenced by a stone monument

and to perpetuate the location of said corner, at the exact location thereof, a permanent marker was placed consisting of a cast iron monument

AND on the 18th day of November, 2013, said permanent marker was found and the ties were updated

Updated reference ties are as shown below.



Revision Date

8/13/15

N.A.D. 1983 Coordinates  
(1996 Adjustment)

County Project Coordinates	
Northing	<u>227474.1642</u>
Easting	<u>542740.0433</u>
Date	<u>6/05/03</u>

I hereby certify that this United States public land survey monument record is correct and complete to the best of my knowledge and belief.

*Larry D. Hoium* Date 8/13/15

Larry D. Hoium, Anoka County Surveyor  
Minnesota License Number 18165