

# CERTIFICATE OF LOCATION OF GOVERNMENT CORNER

County of Anoka

State of Minnesota

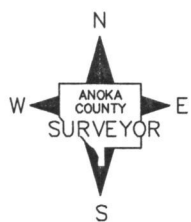
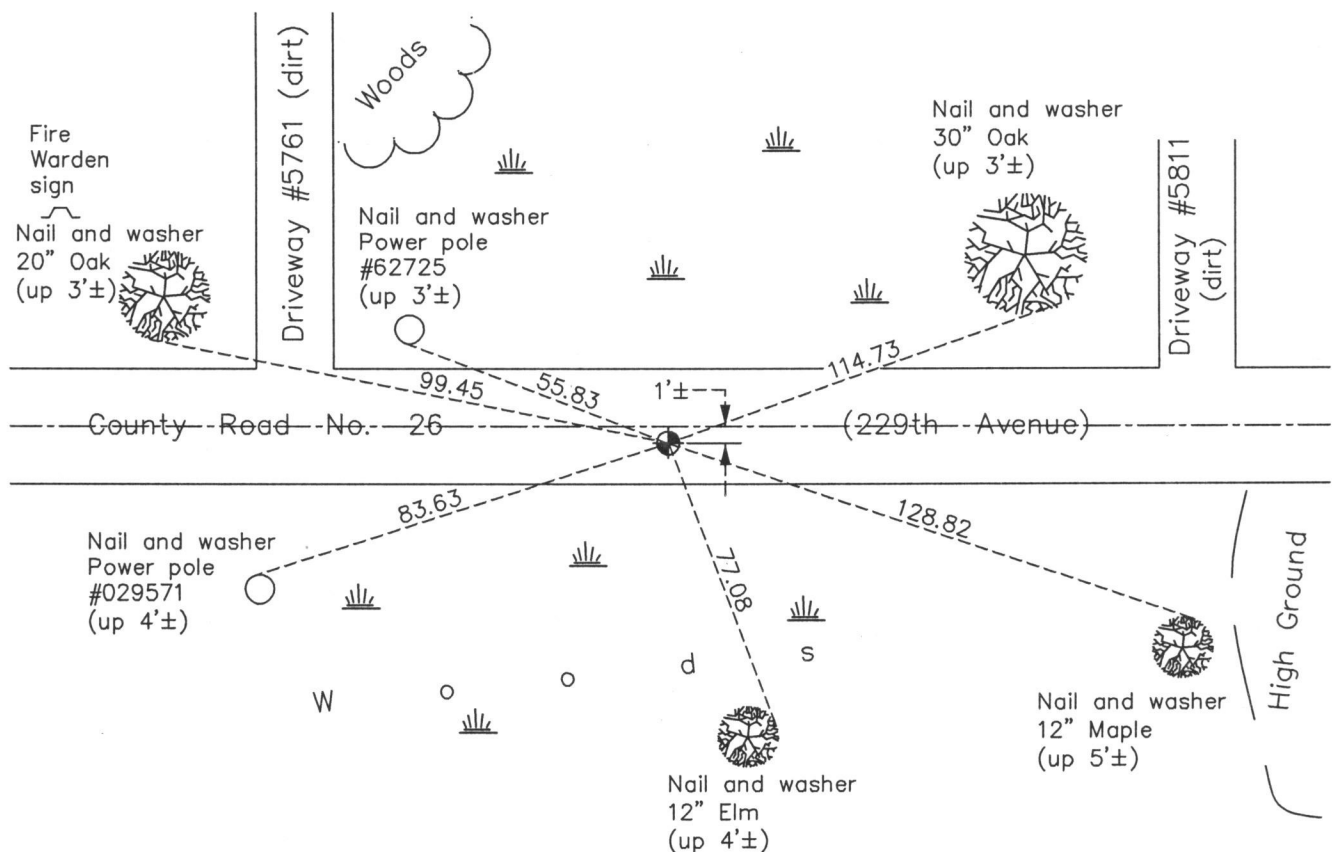
## Northwest Corner of Sec. 5 Township 33 Range 22

On the 28th day of September, 1973, the described corner was evidenced by area resurvey

and to perpetuate the location of said corner, at the exact location thereof, a permanent marker was placed consisting of a cast iron monument

AND on the 18th day of November, 2013, said permanent marker was found and the ties were updated

Updated reference ties are as shown below.



Revision Date  
**8/13/15**

N.A.D. 1983 Coordinates  
(1996 Adjustment)

County Project Coordinates	
Northing	<u>227482.5991</u>
Easting	<u>537485.4129</u>
Date	<u>6/09/03</u>

I hereby certify that this United States public land survey monument record is correct and complete to the best of my knowledge and belief.

*Larry D. Hoium* Date 8/13/15  
 Larry D. Hoium, Anoka County Surveyor  
 Minnesota License Number 18165