

CERTIFICATE OF LOCATION OF GOVERNMENT CORNER

County of Anoka

State of Minnesota

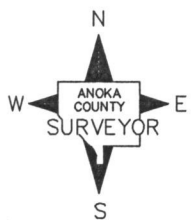
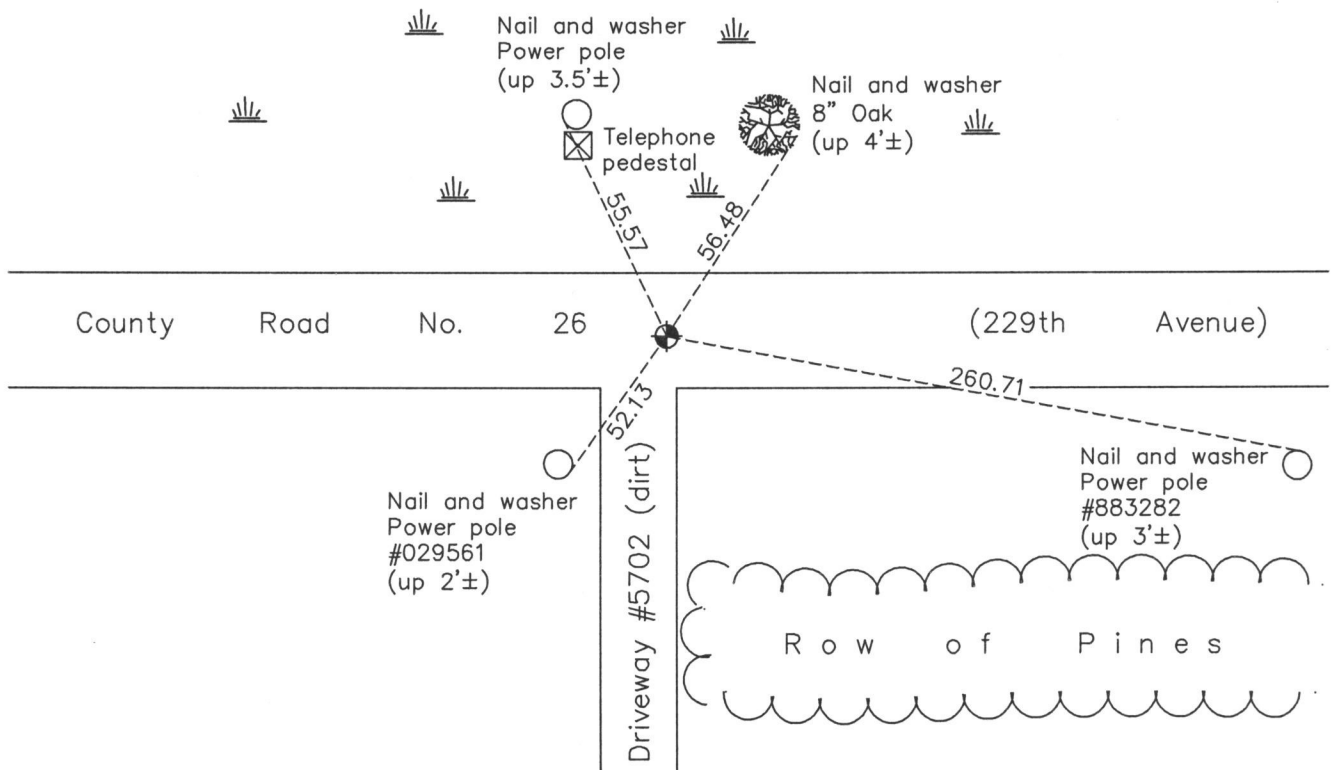
North 1/4 Corner of Sec. 6 Township 33 Range 22

On the 6th day of February, 1963, the described corner was evidenced by a stone located using Highway Department distances

and to perpetuate the location of said corner, at the exact location thereof, a permanent marker was placed consisting of a cast iron monument

AND on the 18th day of November, 2013, said permanent marker was found and the ties were updated

Updated reference ties are as shown below.



Revision Date

8/13/15

N.A.D. 1983 Coordinates
(1996 Adjustment)

County Project Coordinates	
Northing	227536.7016
Easting	534830.3522
Date	6/04/03

I hereby certify that this United States public land survey monument record is correct and complete to the best of my knowledge and belief.

Larry D. Hoium Date 8/13/15

Larry D. Hoium, Anoka County Surveyor
Minnesota License Number 18165