

CERTIFICATE OF LOCATION OF GOVERNMENT CORNER

County of Anoka

State of Minnesota

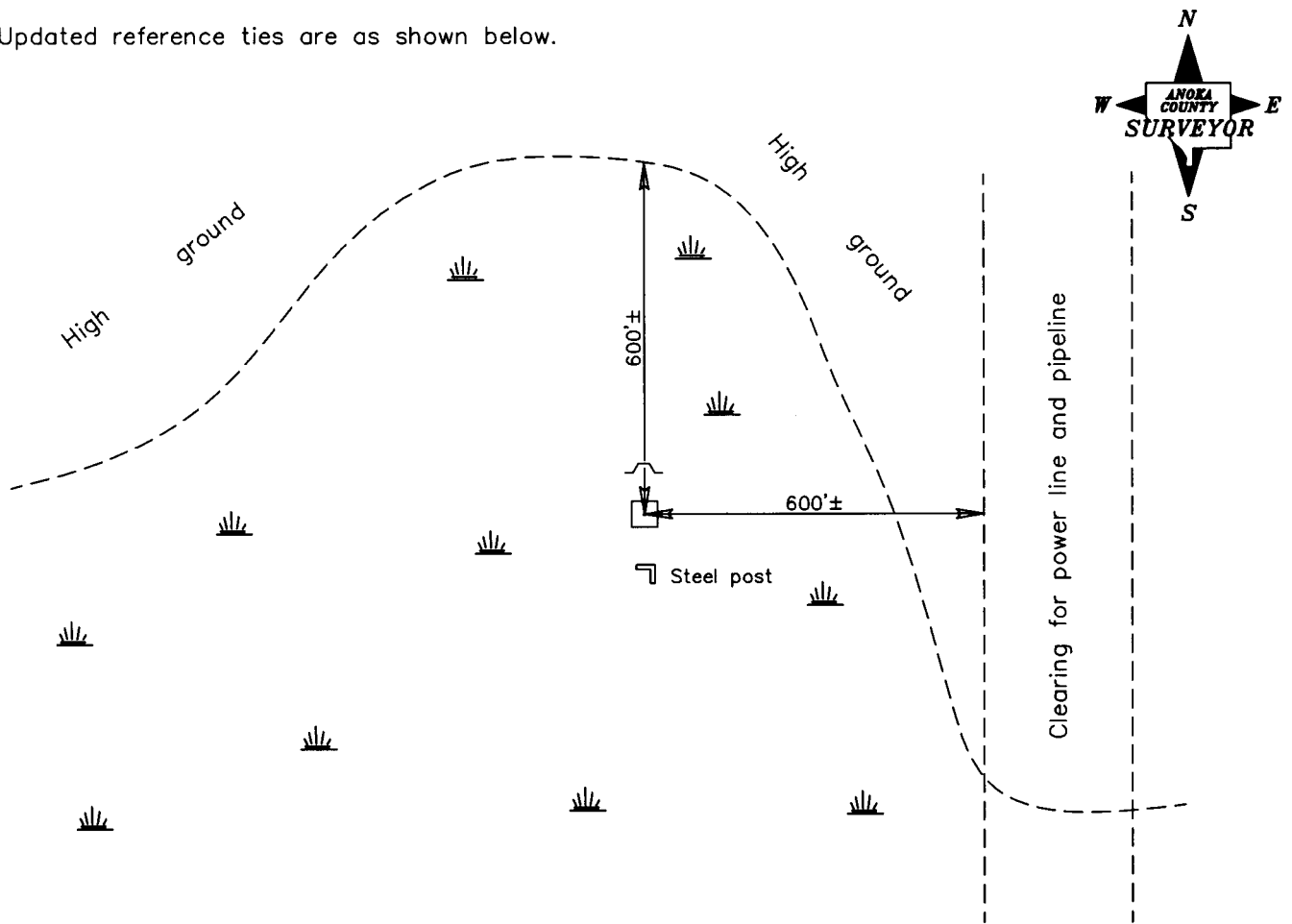
East 1/4 Corner of Sec. 1 Township 33 Range 22

On the 6th day of March, 1975, the described corner was evidenced by a broken concrete monument found using area resurvey

and to perpetuate the location of said corner, at the exact location thereof, a permanent marker was placed consisting of the same concrete monument with a sign and post on the north side and a steel post on the south side

AND on the 16th day of March, 2005, said permanent marker was found and the ties were updated

Updated reference ties are as shown below.



Revised date	N.A.D. 1983 Coordinates (1996 Adjustment)
3/27/91	County Project Coordinates
7/11/95	Northing <u>224358.1985</u>
3/16/05	Easting <u>563721.0924</u>
	Date <u>3/16/05</u>

I hereby certify that this United States public land survey monument record is correct and complete to the best of my knowledge and belief.

Larry D. Hoium Date 3/16/05

Larry D. Hoium, Anoka County Surveyor

Minnesota License Number 18165