

CERTIFICATE OF LOCATION OF GOVERNMENT CORNER

County of Anoka

State of Minnesota

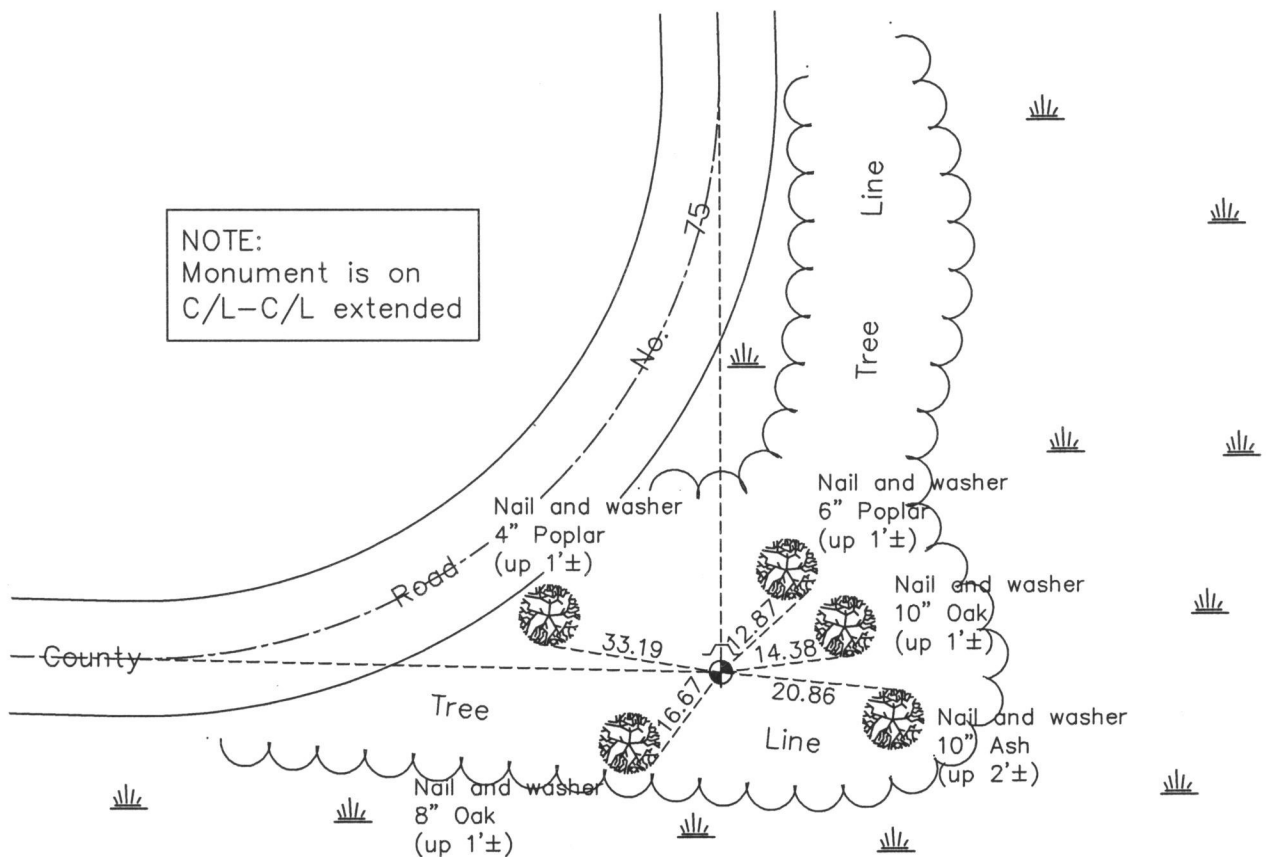
North 1/4 Corner of Sec. 11 Township 33 Range 22

On the 16th day of July, 1974, the described corner was evidenced by area resurvey

and to perpetuate the location of said corner, at the exact location thereof, a permanent marker was placed consisting of a cast iron monument with a sign and post on the north side

AND on the 22nd day of November, 2013, said permanent marker was found and the ties were updated

Updated reference ties are as shown below.



NOTE:
Monument is on
C/L-C/L extended

N

W ANOKA COUNTY SURVEYOR E

S

Revision Date

8/18/15

N.A.D. 1983 Coordinates
(1996 Adjustment)

County Project Coordinates	
Northing	<u>222012.1736</u>
Easting	<u>555858.5843</u>
Date	<u>4/13/04</u>

I hereby certify that this United States public land survey monument record is correct and complete to the best of my knowledge and belief.

Larry D. Hoium Date 8/18/15

Larry D. Hoium, Anoka County Surveyor

Minnesota License Number 18165