

# CERTIFICATE OF LOCATION OF GOVERNMENT CORNER

County of Anoka

State of Minnesota

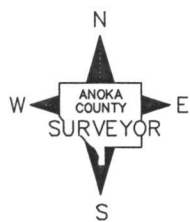
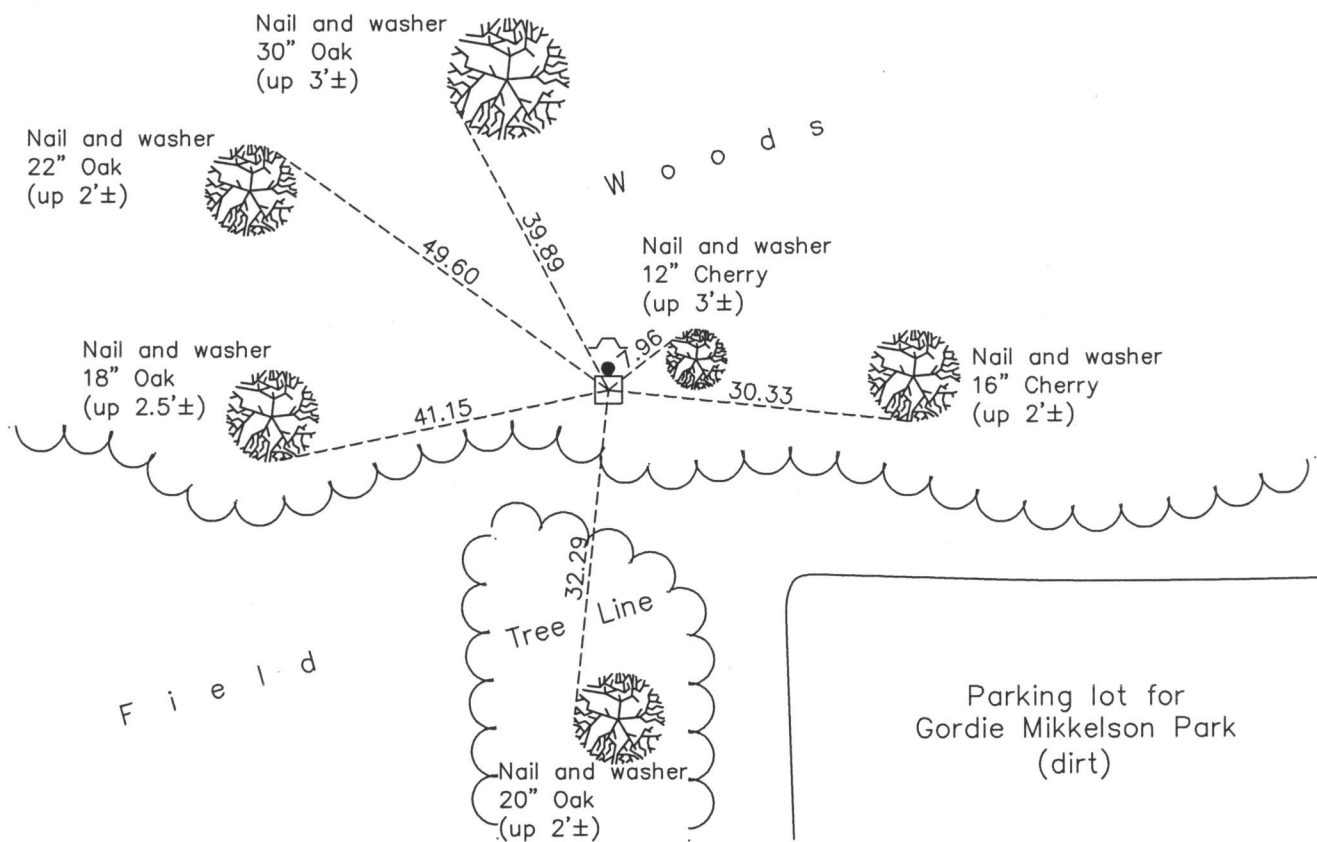
## North 1/4 Corner of Sec. 8 Township 33 Range 22

On the 6th day of July, 1960, the described corner was evidenced by a granite monument with an iron rod on the north side

and to perpetuate the location of said corner, at the exact location thereof, a permanent marker was placed consisting of the same granite monument and iron rod

AND on the 4th day of December, 2013, said permanent marker was found and the ties were updated. A sign and post was set on the north side of monument.

Updated reference ties are as shown below.



Revision Date  
8/24/15

N.A.D. 1983 Coordinates  
(1996 Adjustment)

| County Project Coordinates |                    |
|----------------------------|--------------------|
| Northing                   | <u>222120.4140</u> |
| Easting                    | <u>539743.1548</u> |
| Date                       | <u>4/13/04</u>     |

I hereby certify that this United States public land survey monument record is correct and complete to the best of my knowledge and belief.

*Larry D. Hoium* Date 8/24/15

Larry D. Hoium, Anoka County Surveyor  
Minnesota License Number 18165