

CERTIFICATE OF LOCATION OF GOVERNMENT CORNER

County of Anoka

State of Minnesota

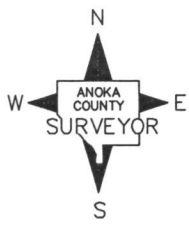
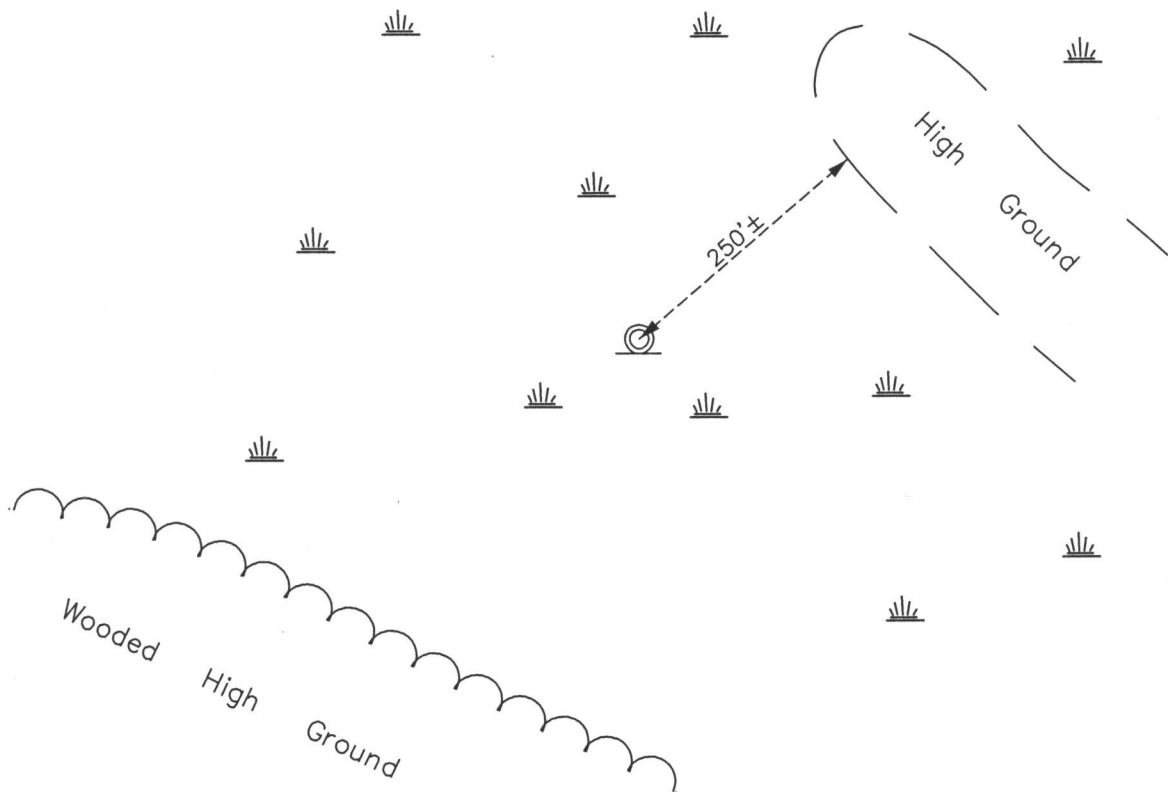
East 1/4 Corner of Sec. 11 Township 33 Range 22

On the 17th day of January, 1975, the described corner was evidenced by area resurvey

and to perpetuate the location of said corner, at the exact location thereof, a permanent marker was placed consisting of a red and white iron pipe

AND on the 2nd day of January, 2014, said permanent marker was found with a sign attached facing south. There were no available objects to use as ties.

Updated reference ties are as shown below.



Revision Date
8/27/15

N.A.D. 1983 Coordinates
 (1996 Adjustment)

County Project Coordinates	
Northing	<u>219320.9142</u>
Easting	<u>558350.8646</u>
Date	<u>3/23/05</u>

I hereby certify that this United States public land survey monument record is correct and complete to the best of my knowledge and belief.

Larry D. Hoium Date 8/27/15
 Larry D. Hoium, Anoka County Surveyor
 Minnesota License Number 18165