

CERTIFICATE OF LOCATION OF GOVERNMENT CORNER

County of Anoka

State of Minnesota

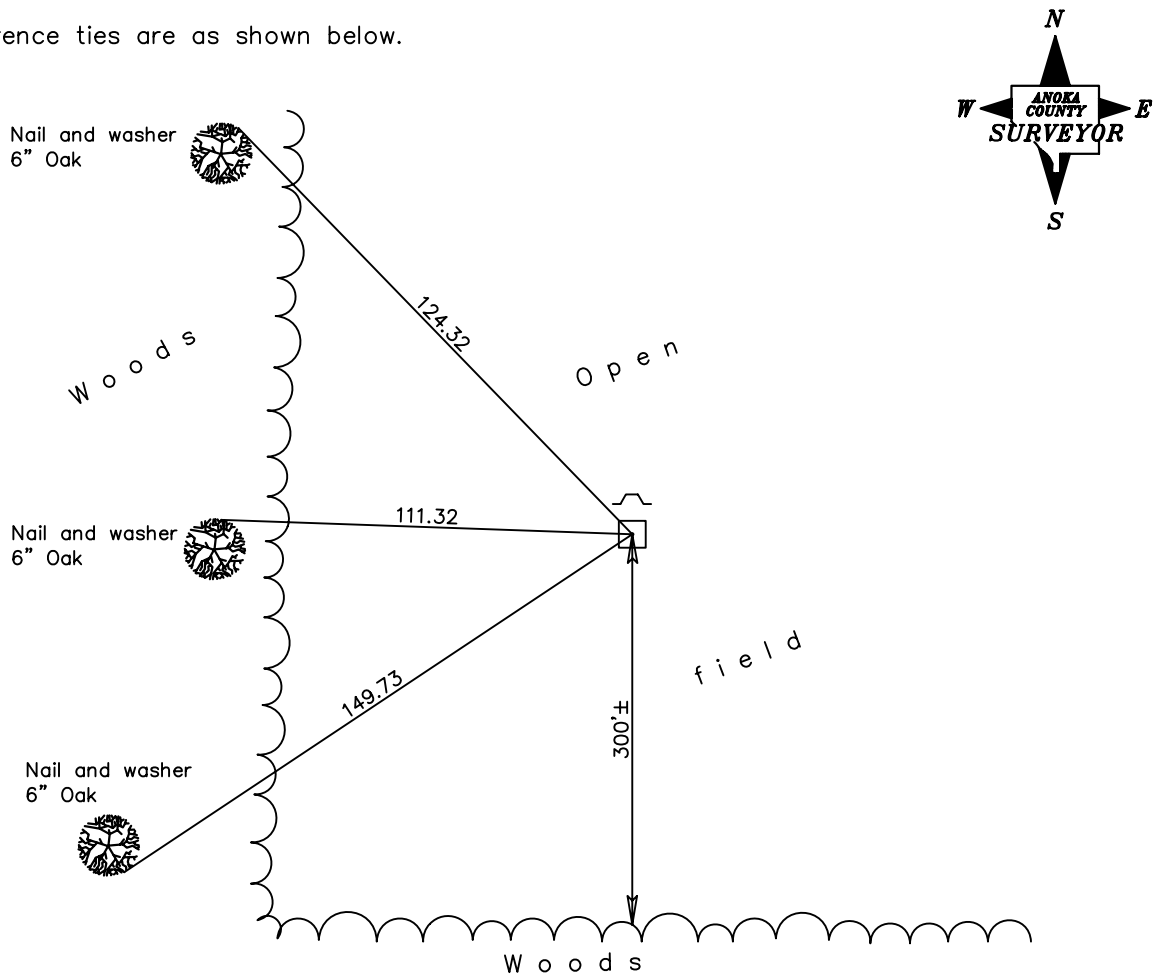
Southeast Corner of Sec. 12 Township 33 Range 22

On the 25th day of August, 1975, the described corner was evidenced by a granite monument

and to perpetuate the location of said corner, at the exact location thereof, a permanent marker was placed consisting of the same granite monument up 2'± with a sign and post on the north side

AND on the ___ day of _____, _____, said permanent marker was _____

Updated reference ties are as shown below.



Revised date

7/24/78
3/28/91

N.A.D. 1983 Coordinates
(1996 Adjustment)

County Project Coordinates	
Northing	<u>216488.0632</u>
Easting	<u>563597.2538</u>
Date	<u>3/21/05</u>

I hereby certify that this United States public land survey monument record is correct and complete to the best of my knowledge and belief.

_____ Date _____
 _____, Anoka County Surveyor
 Minnesota License Number _____