

# CERTIFICATE OF LOCATION OF GOVERNMENT CORNER

County of Anoka

State of Minnesota

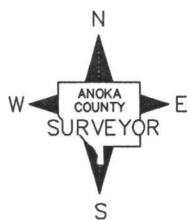
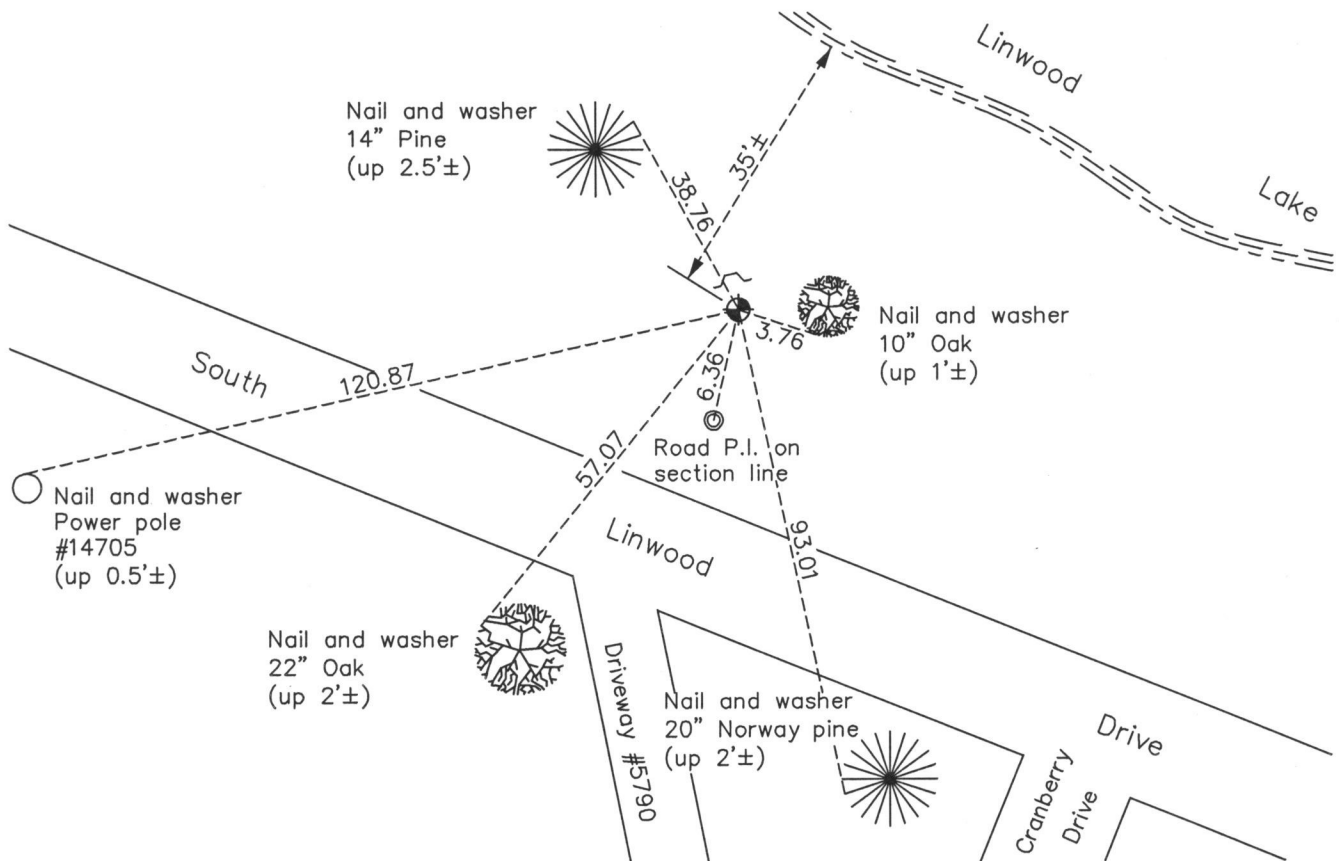
Witness Corner of Sec. 18 Township 33 Range 22  
 (also theoretical East 1/4 corner)

On the 10th day of November, 1970, the described corner was evidenced by area resurvey

and to perpetuate the location of said corner, at the exact location thereof, a permanent marker was placed consisting of a cast iron monument

AND on the 10th day of December, 2013, said permanent marker was found down 1'± and with a sign and post on the north side. The ties were updated.

Updated reference ties are as shown below.



Revision Date

8/31/15

N.A.D. 1983 Coordinates  
(1996 Adjustment)

County Project Coordinates	
Northing	<u>214066.0488</u>
Easting	<u>536876.6745</u>
Date	<u>4/08/04</u>

I hereby certify that this United States public land survey monument record is correct and complete to the best of my knowledge and belief.

*Larry D. Hoium* Date 8/31/15

Larry D. Hoium, Anoka County Surveyor  
Minnesota License Number 18165