

CERTIFICATE OF LOCATION OF GOVERNMENT CORNER

County of Anoka

State of Minnesota

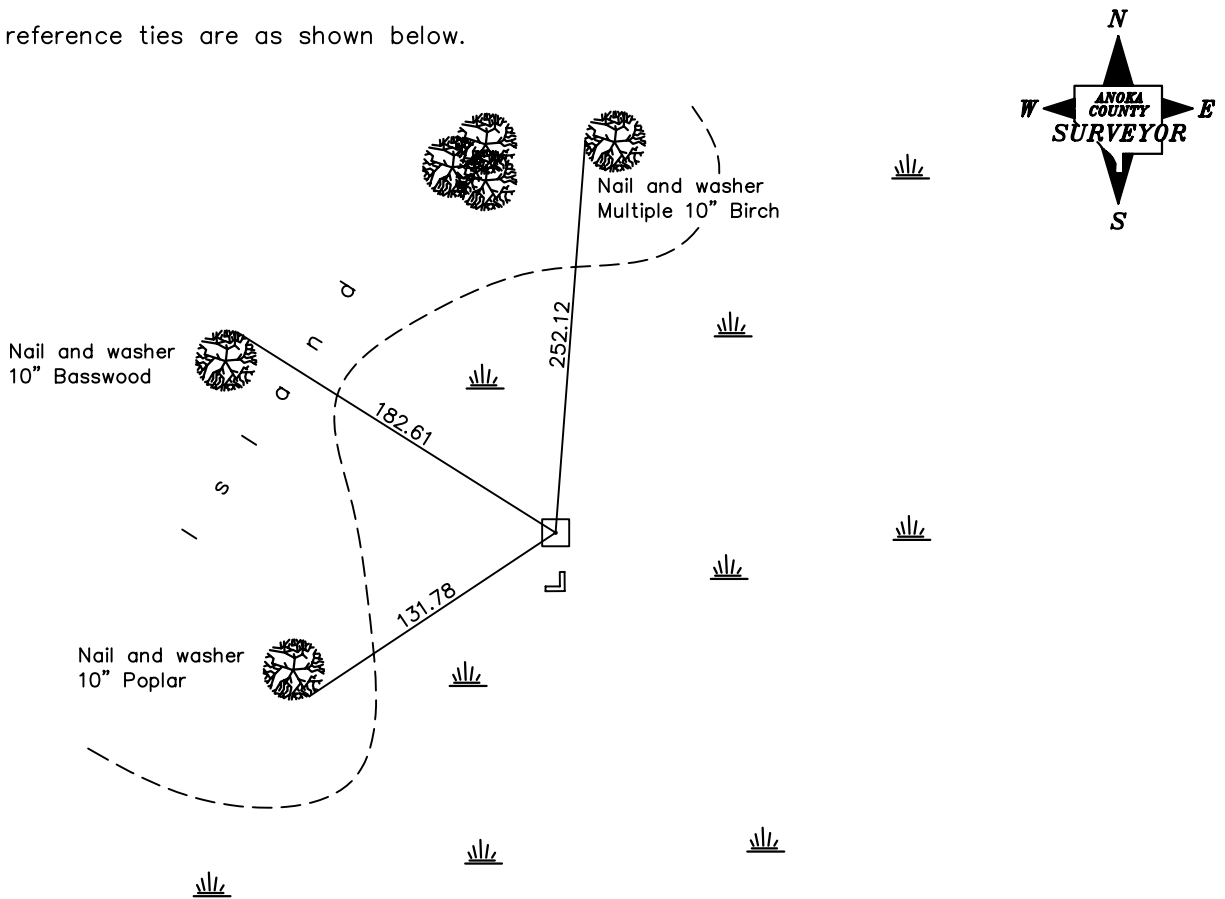
West 1/4 Corner of Sec. 13 Township 33 Range 22

On the 21st day of April, 1980, the described corner was evidenced by a concrete monument

and to perpetuate the location of said corner, at the exact location thereof, a permanent marker was placed consisting of the same concrete monument with a steel post on the south side

AND on the ___ day of _____, _____, said permanent marker was _____

Updated reference ties are as shown below.



Revised date

4/21/80
7/18/95

N.A.D. 1983 Coordinates
(1996 Adjustment)

County Project Coordinates	
Northing	214026.0209
Easting	558194.5064
Date	3/07/06

I hereby certify that this United States public land survey monument record is correct and complete to the best of my knowledge and belief.

_____ Date _____
 _____, Anoka County Surveyor
 Minnesota License Number _____