

CERTIFICATE OF LOCATION OF GOVERNMENT CORNER

County of Anoka

State of Minnesota

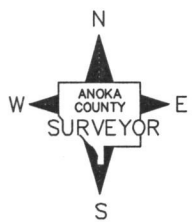
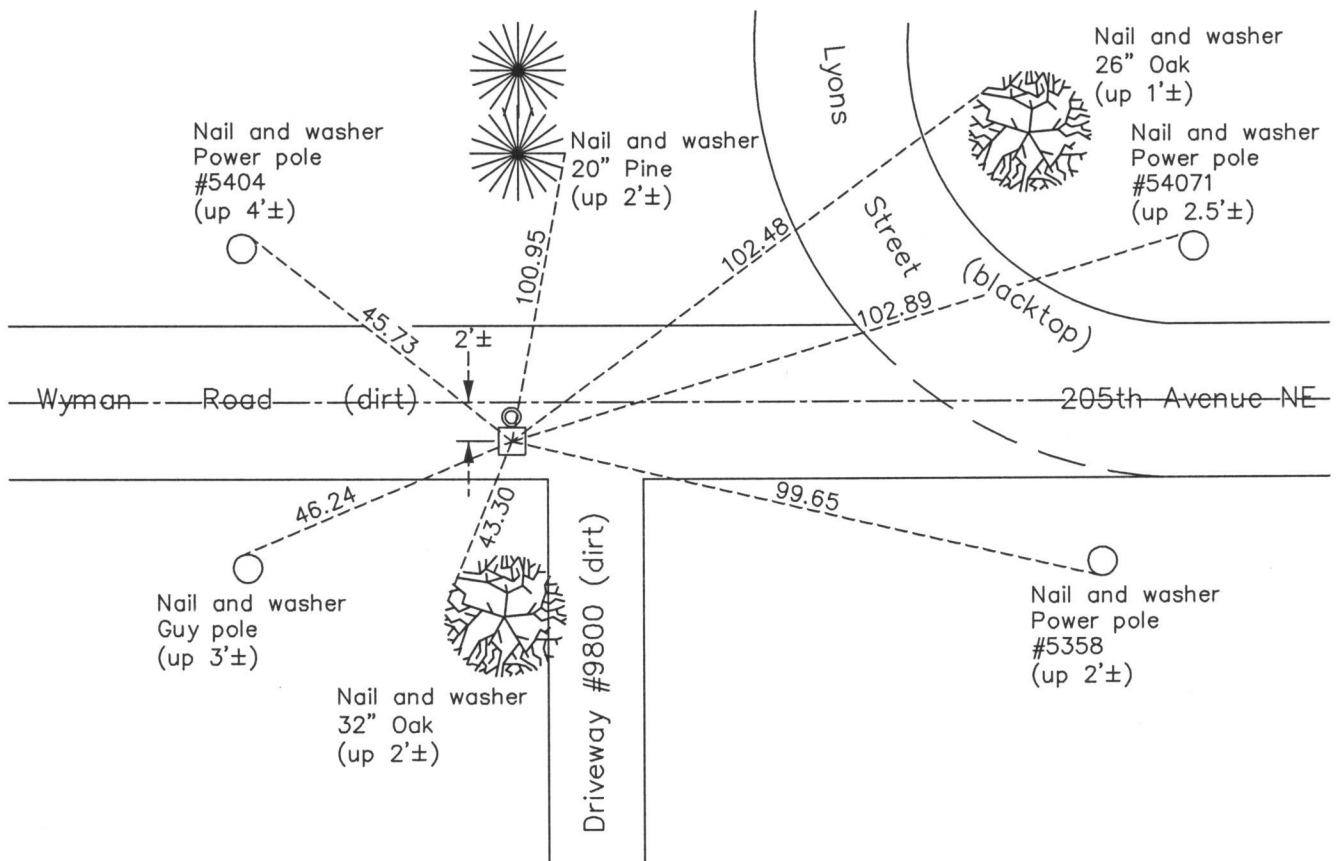
Southeast Corner of Sec. 13 Township 33 Range 22

On the 22nd day of August, 1966, the described corner was evidenced by a stone monument found by the Highway Department on 9/02/1959

and to perpetuate the location of said corner, at the exact location thereof, a permanent marker was placed consisting of the same stone monument with a 1/2" iron pipe set on the north side

AND on the 8th day of April, 2014, said permanent marker was found down 1'± and the ties were updated

Updated reference ties are as shown below.



Revision Date

9/01/15

N.A.D. 1983 Coordinates
(1996 Adjustment)

County Project Coordinates	
Northing	211196.5825
Easting	563516.0770
Date	4/07/04

I hereby certify that this United States public land survey monument record is correct and complete to the best of my knowledge and belief.

Larry D. Hoium Date 9/01/15

Larry D. Hoium, Anoka County Surveyor

Minnesota License Number 18165