

CERTIFICATE OF LOCATION OF GOVERNMENT CORNER

County of Anoka

State of Minnesota

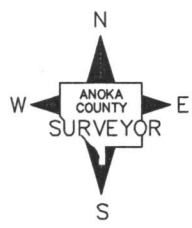
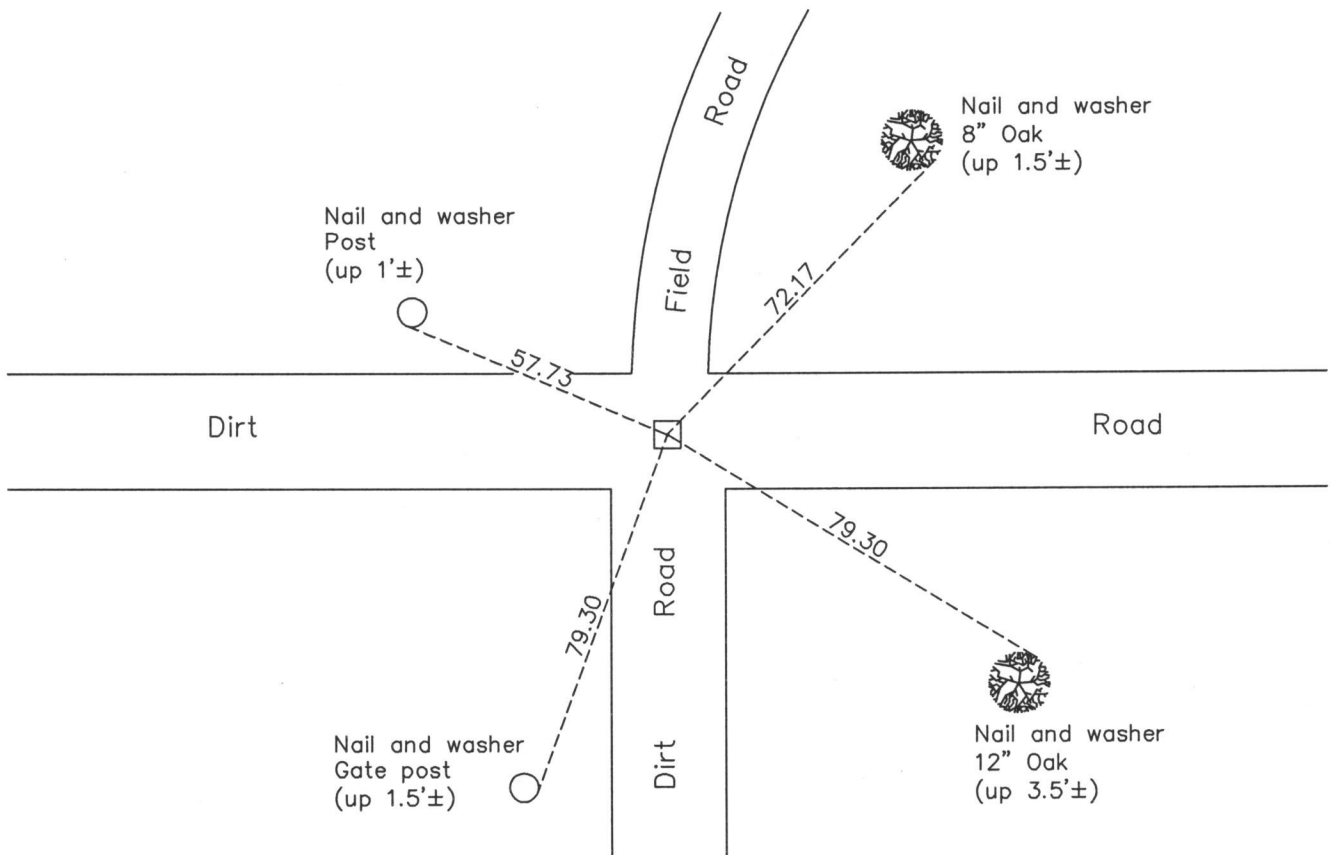
Southeast Corner of Sec. 14 Township 33 Range 22

On the 14th day of August, 1975, the described corner was evidenced by a granite monument

and to perpetuate the location of said corner, at the exact location thereof, a permanent marker was placed consisting of the same granite monument

AND on the 10th day of December, 2013, said permanent marker was found down 0.6'± with an "X" chiseled into the top and the ties were updated

Updated reference ties are as shown below.



N.A.D. 1983 Coordinates
(1996 Adjustment)

County Project Coordinates	
Northing	<u>211382.8752</u>
Easting	<u>558190.2553</u>
Date	<u>5/05/04</u>

Revision Date
9/01/15

I hereby certify that this United States public land survey monument record is correct and complete to the best of my knowledge and belief.

Larry D. Hoium, Date 9/01/15

Larry D. Hoium, Anoka County Surveyor
Minnesota License Number 18165