

CERTIFICATE OF LOCATION OF GOVERNMENT CORNER

County of Anoka

State of Minnesota

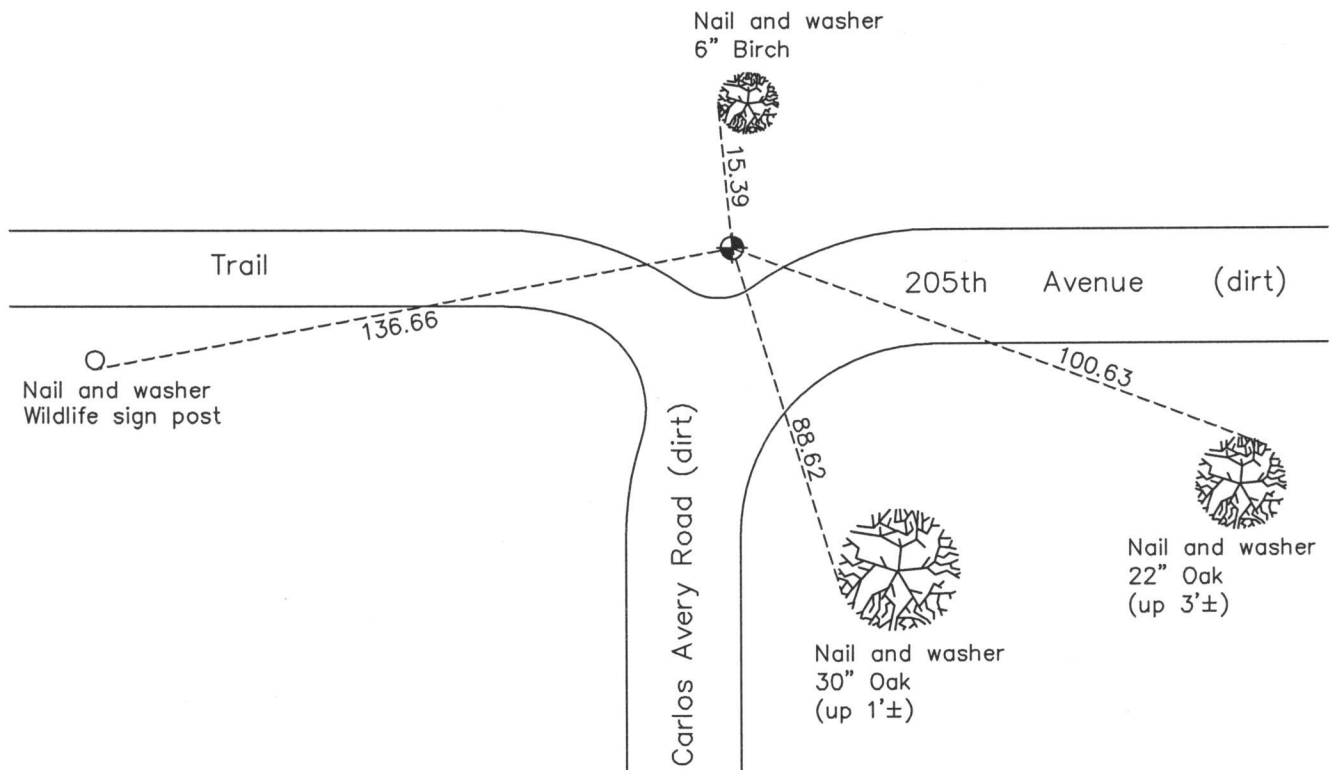
South $\frac{1}{4}$ Corner of Sec. 15 Township 33 Range 22

On the 25th day of February, 1972, the described corner was evidenced by a concrete monument

and to perpetuate the location of said corner, at the exact location thereof, a permanent marker was placed consisting of a cast iron monument

AND on the 9th day of December, 2013, said permanent marker was found down 2.5'± and the ties were updated

Updated reference ties are as shown below.



N
W ANOKA COUNTY SURVEYOR E
S

Revision Date
9/01/15

N.A.D. 1983 Coordinates
(1996 Adjustment)

County Project Coordinates	
Northing	<u>211465.4516</u>
Easting	<u>550153.1907</u>
Date	<u>4/28/04</u>

I hereby certify that this United States public land survey monument record is correct and complete to the best of my knowledge and belief.

Larry D. Hoium Date 9/01/15

Larry D. Hoium, Anoka County Surveyor
Minnesota License Number 18165