

# CERTIFICATE OF LOCATION OF GOVERNMENT CORNER

County of Anoka

State of Minnesota

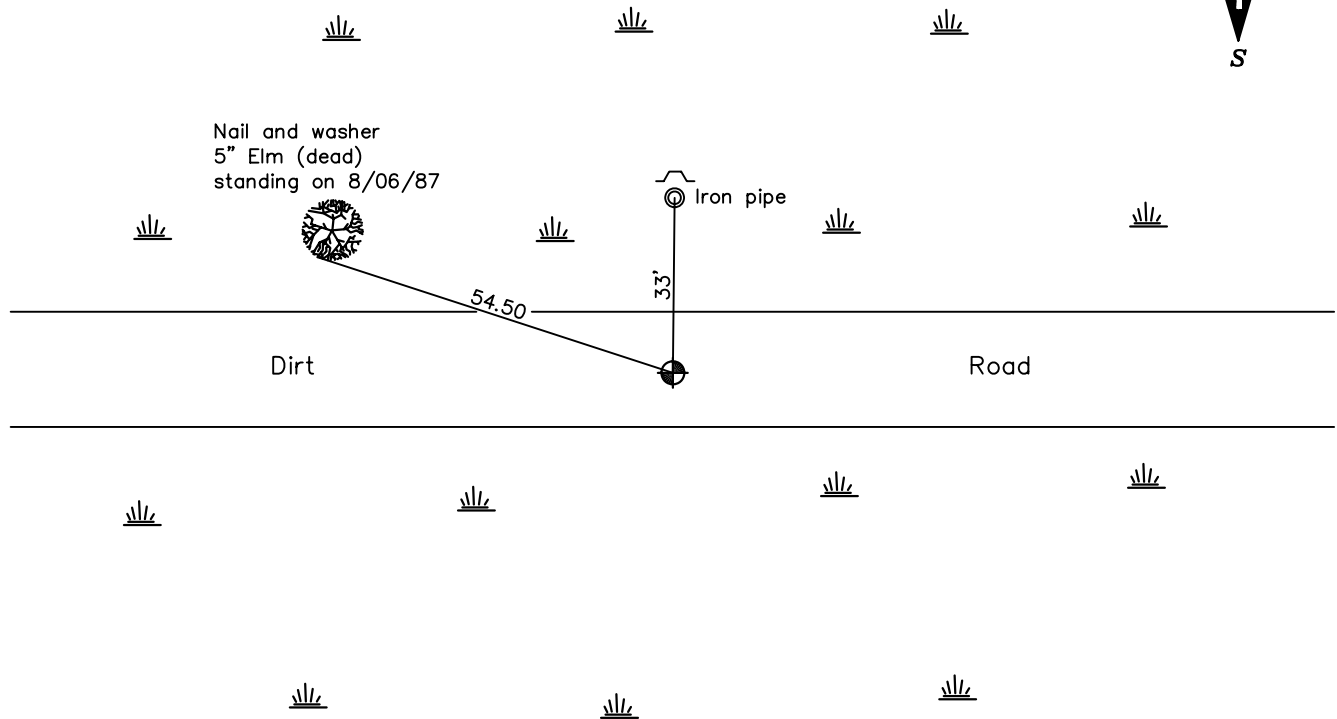
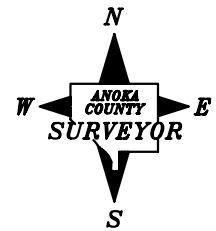
## Southwest Corner of Sec. 15 Township 33 Range 22

On the 31st day of July, 1975, the described corner was evidenced by a concrete monument

and to perpetuate the location of said corner, at the exact location thereof, a permanent marker was placed consisting of a cast iron monument

AND on the \_\_\_ day of \_\_\_\_\_, \_\_\_\_\_, said permanent marker was \_\_\_\_\_

Updated reference ties are as shown below.



Revised date

|         |
|---------|
| 8/06/87 |
| 6/17/93 |
|         |
|         |
|         |

N.A.D. 1983 Coordinates  
(1996 Adjustment)

|                             |
|-----------------------------|
| County Project Coordinates  |
| Northing <u>211400.5990</u> |
| Easting <u>547488.1303</u>  |
| Date <u>4/28/04</u>         |

I hereby certify that this United States public land survey monument record is correct and complete to the best of my knowledge and belief.

\_\_\_\_\_ Date \_\_\_\_\_  
 \_\_\_\_\_, Anoka County Surveyor  
 Minnesota License Number \_\_\_\_\_