

# CERTIFICATE OF LOCATION OF GOVERNMENT CORNER

County of Anoka

State of Minnesota

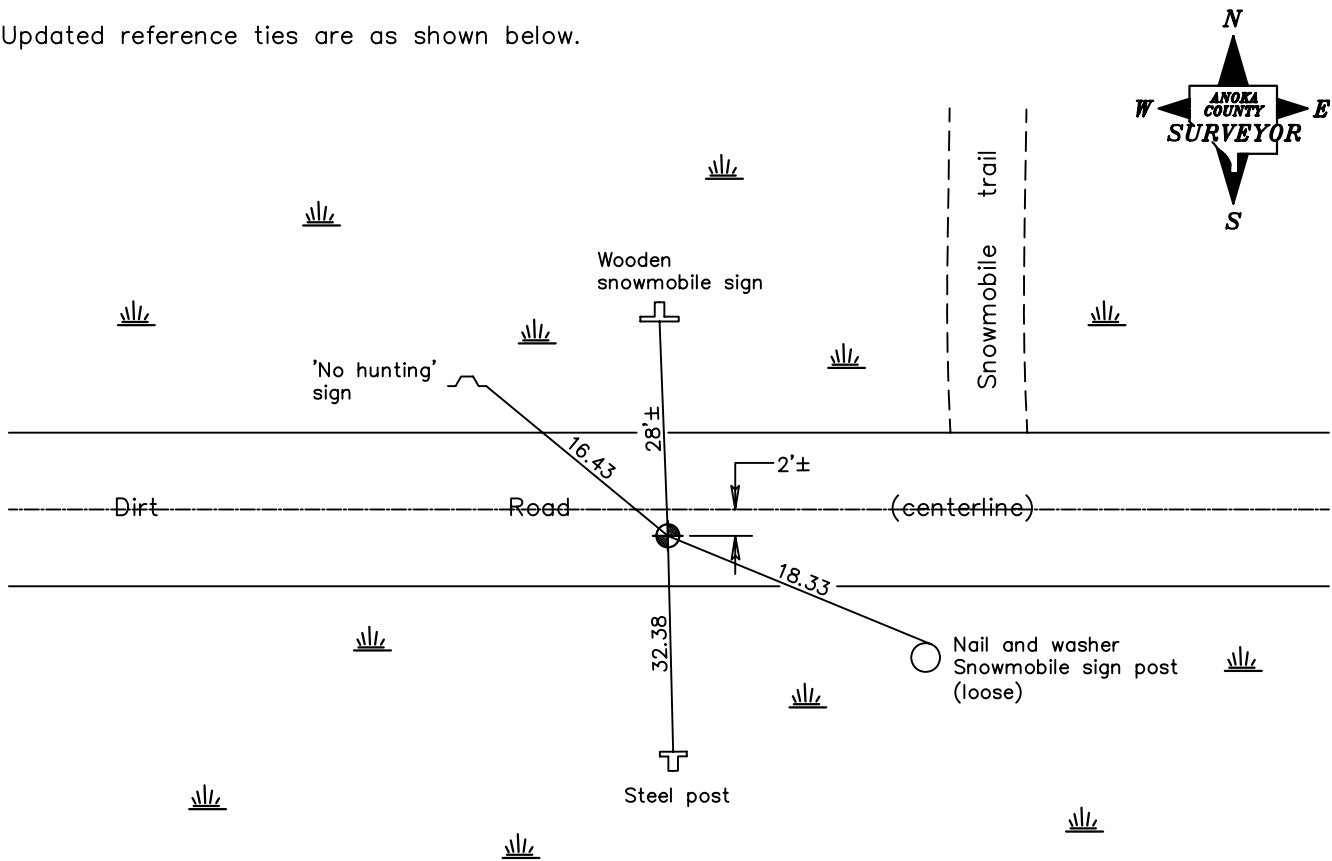
## South $\frac{1}{4}$ Corner of Sec. 16 Township 33 Range 22

On the 4th day of August, 1975, the described corner was evidenced by a concrete monument

and to perpetuate the location of said corner, at the exact location thereof, a permanent marker was placed consisting of a cast iron monument

AND on the \_\_\_ day of \_\_\_\_\_, \_\_\_\_\_, said permanent marker was \_\_\_\_\_

Updated reference ties are as shown below.



**Revised date**

12/26/90
7/02/93

N.A.D. 1983 Coordinates  
(1996 Adjustment)

County Project Coordinates
Northing <u>211326.1830</u>
Easting <u>544813.4321</u>
Date <u>5/03/04</u>

I hereby certify that this United States public land survey monument record is correct and complete to the best of my knowledge and belief.

\_\_\_\_\_ Date \_\_\_\_\_  
 \_\_\_\_\_, Anoka County Surveyor  
 Minnesota License Number \_\_\_\_\_