

CERTIFICATE OF LOCATION OF GOVERNMENT CORNER

County of Anoka

State of Minnesota

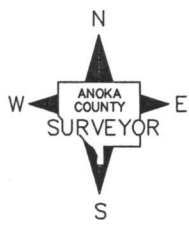
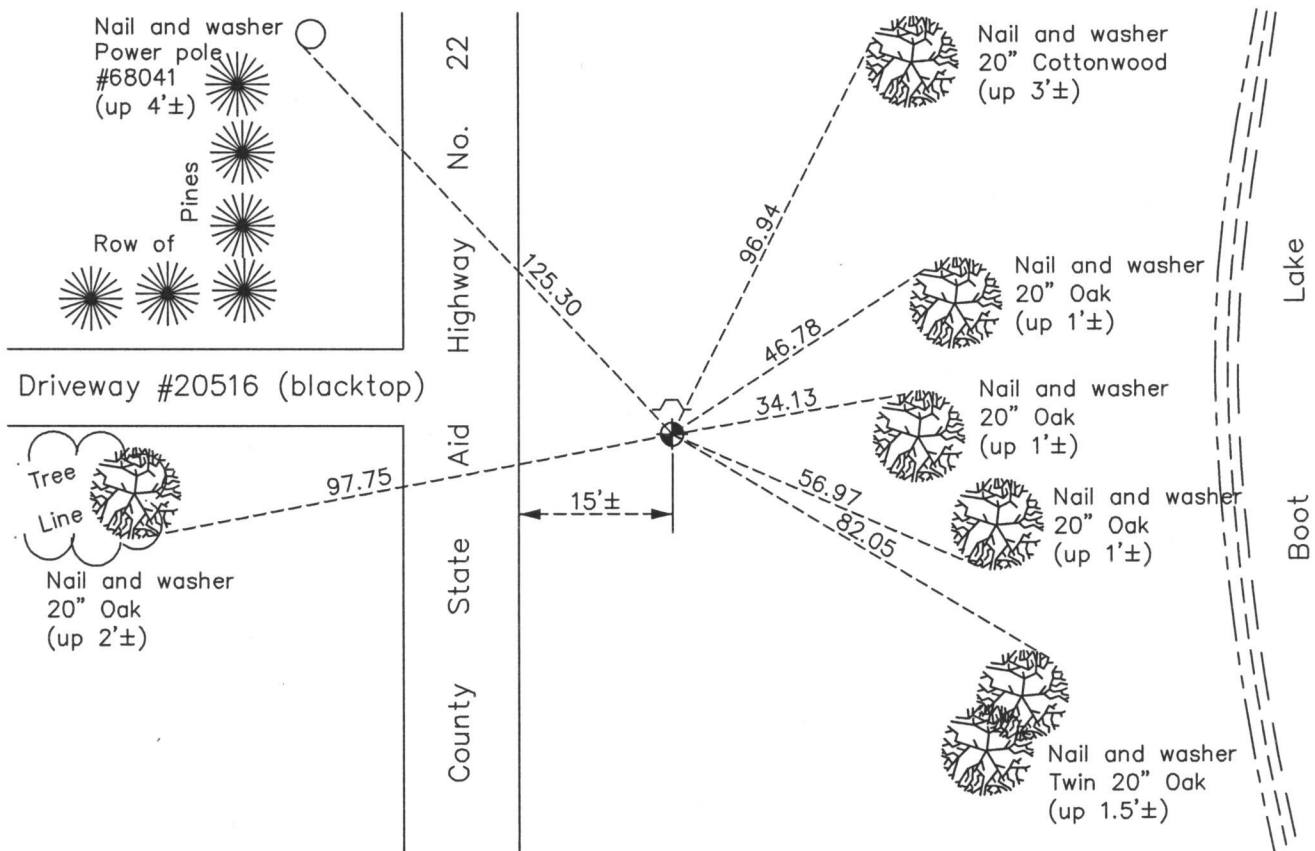
North 1/4 Corner of Sec. 19 Township 33 Range 22

On the 3rd day of November, 1970, the described corner was evidenced by area resurvey

and to perpetuate the location of said corner, at the exact location thereof, a permanent marker was placed consisting of a cast iron monument with a sign and post on the north side

AND on the 5th day of December, 2013, said permanent marker was found down 1'± and the ties were updated. Missing sign and post was replaced on north side of monument.

Updated reference ties are as shown below.



N.A.D. 1983 Coordinates
(1996 Adjustment)

County Project Coordinates	
Northing	<u>211443.6519</u>
Easting	<u>534107.8938</u>
Date	<u>4/12/04</u>

Revision Date
9/02/15

I hereby certify that this United States public land survey monument record is correct and complete to the best of my knowledge and belief.

Larry D. Hoium Date 9/02/15

Larry D. Hoium, Anoka County Surveyor
Minnesota License Number 18165