

CERTIFICATE OF LOCATION OF GOVERNMENT CORNER

County of Anoka

State of Minnesota

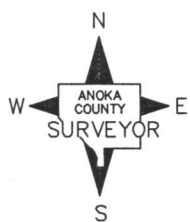
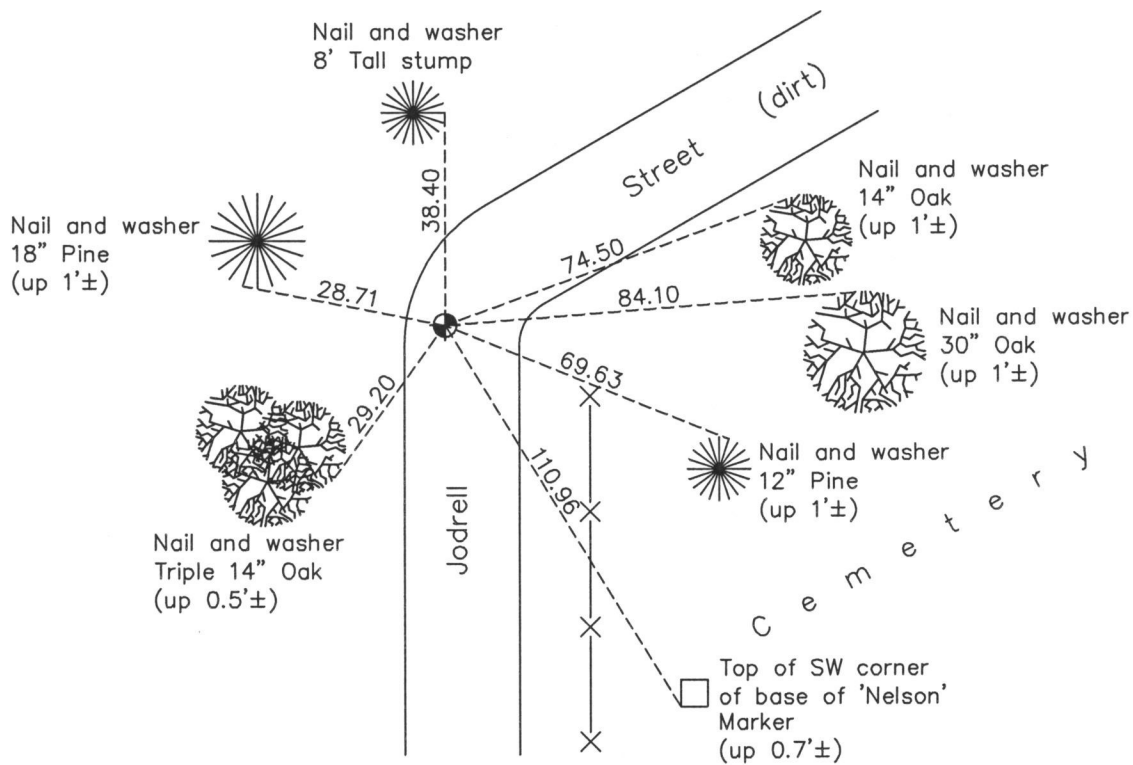
West 1/4 Corner of Sec. 20 Township 33 Range 22

On the 3rd day of November, 1970, the described corner was evidenced by cemetery
platting and area resurvey

and to perpetuate the location of said corner, at the exact location thereof, a permanent marker
 was placed consisting of a cast iron monument (down 1'±)

AND on the 19th day of December, 2013, said permanent marker was found down 2'± and
the ties were updated

Updated reference ties are as shown below.



Revision Date
9/02/15

N.A.D. 1983 Coordinates
 (1996 Adjustment)

County Project Coordinates	
Northing	208783.8096
Easting	536858.3165
Date	4/13/04

I hereby certify that this United States public land survey monument record is correct and complete to the best of my knowledge and belief.

Larry D. Hoium Date 9/02/15

Larry D. Hoium, Anoka County Surveyor
 Minnesota License Number 18165