

CERTIFICATE OF LOCATION OF GOVERNMENT CORNER

County of Anoka

State of Minnesota

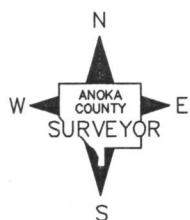
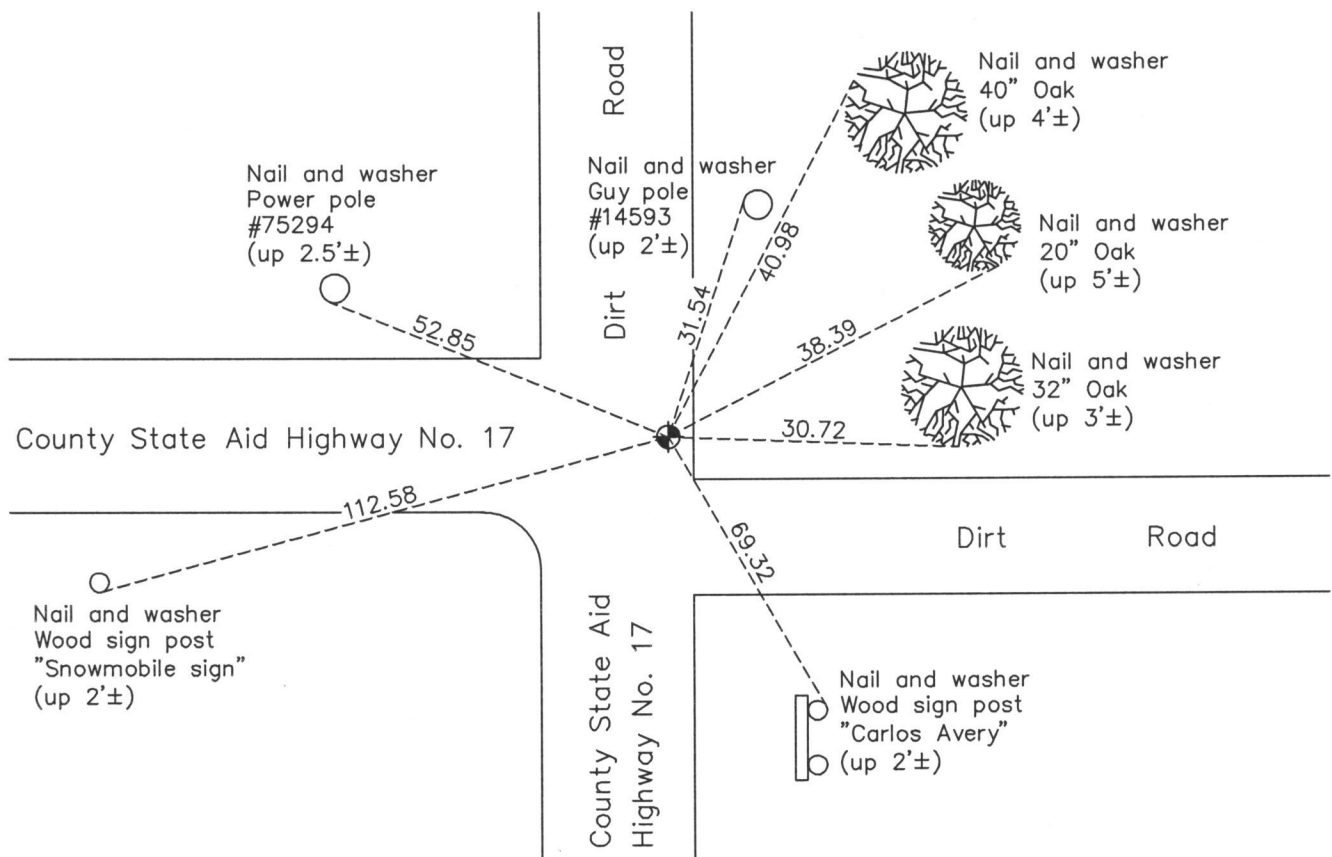
Northeast Corner of Sec. 30 Township 33 Range 22

On the 23rd day of August, 1966, the described corner was evidenced by an iron pipe set by N.C. Hoium

and to perpetuate the location of said corner, at the exact location thereof, a permanent marker was placed consisting of a cast iron monument down 0.5'±

AND on the 23rd day of April, 2014, said permanent marker was found down 1'± and the ties were updated

Updated reference ties are as shown below.



Revision Date

9/09/15

N.A.D. 1983 Coordinates
(1996 Adjustment)

| County Project Coordinates | |
|----------------------------|-------------|
| Northing | 206143.4410 |
| Easting | 536931.6409 |
| Date | 7/01/03 |

I hereby certify that this United States public land survey monument record is correct and complete to the best of my knowledge and belief.

Larry D. Hoium Date 9/09/15

Larry D. Hoium, Anoka County Surveyor
Minnesota License Number 18165