

CERTIFICATE OF LOCATION OF GOVERNMENT CORNER

County of Anoka State of Minnesota

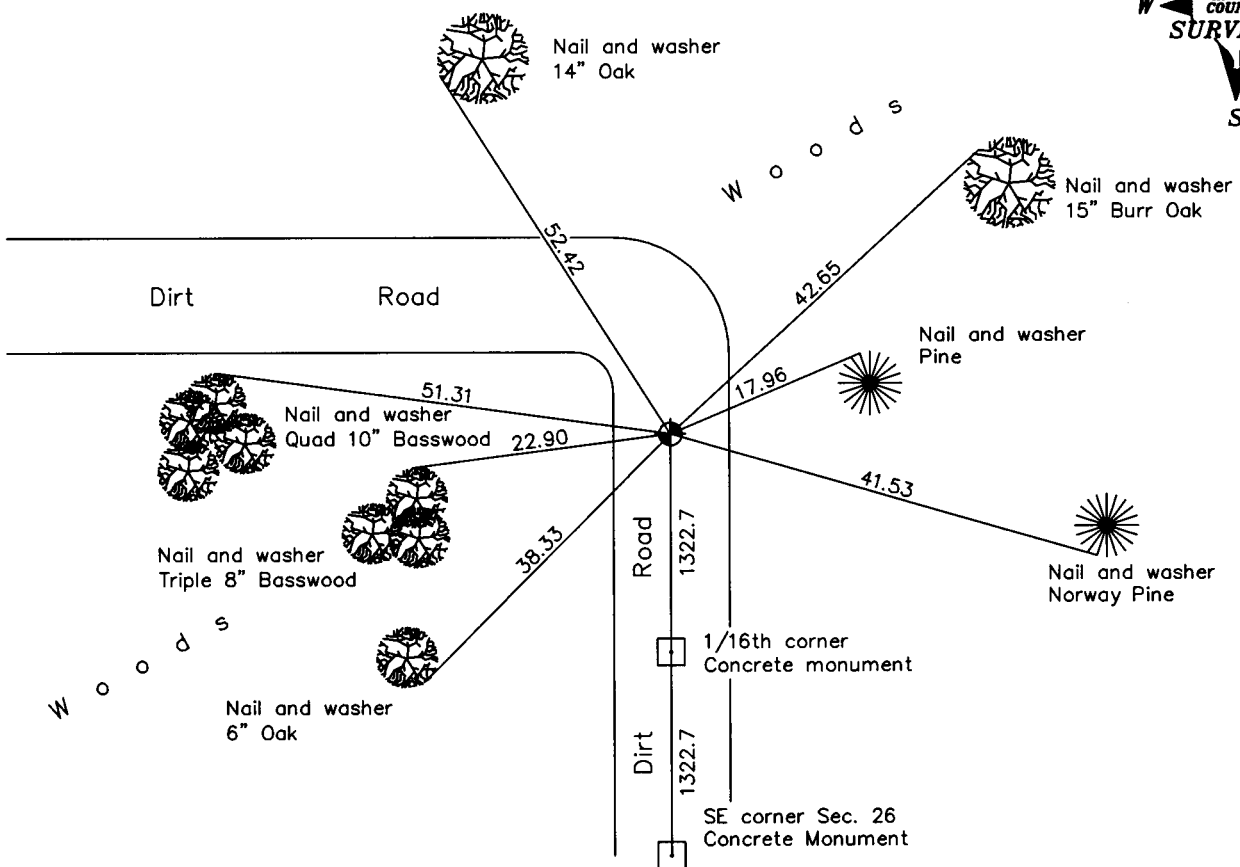
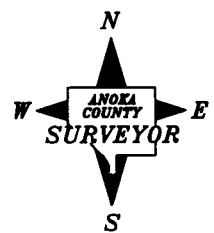
East 1/4 Corner of Sec. 26 Township 33 Range 22

On the 26th day of August, 1968, the described corner was evidenced by a 1" iron pipe and Don Hult ties

and to perpetuate the location of said corner, at the exact location thereof, a permanent marker was placed consisting of a cast iron monument

AND on the 17th day of August, 2004, said permanent marker was found broken off, was replaced (down 0.5'±) and the ties were updated

Updated reference ties are as shown below.



Revised date
11/02/90
8/17/04

N.A.D. 1983 Coordinates (1996 Adjustment)	
County Project Coordinates	
Northing	<u>203459.5232</u>
Easting	<u>558254.5868</u>
Date	<u>5/25/04</u>

I hereby certify that this United States public land survey monument record is correct and complete to the best of my knowledge and belief.

Larry D. Hoium Date 8/17/04

Larry D. Hoium, Anoka County Surveyor

Minnesota License Number 18165