

CERTIFICATE OF LOCATION OF GOVERNMENT CORNER

County of Anoka

State of Minnesota

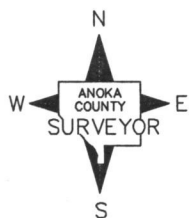
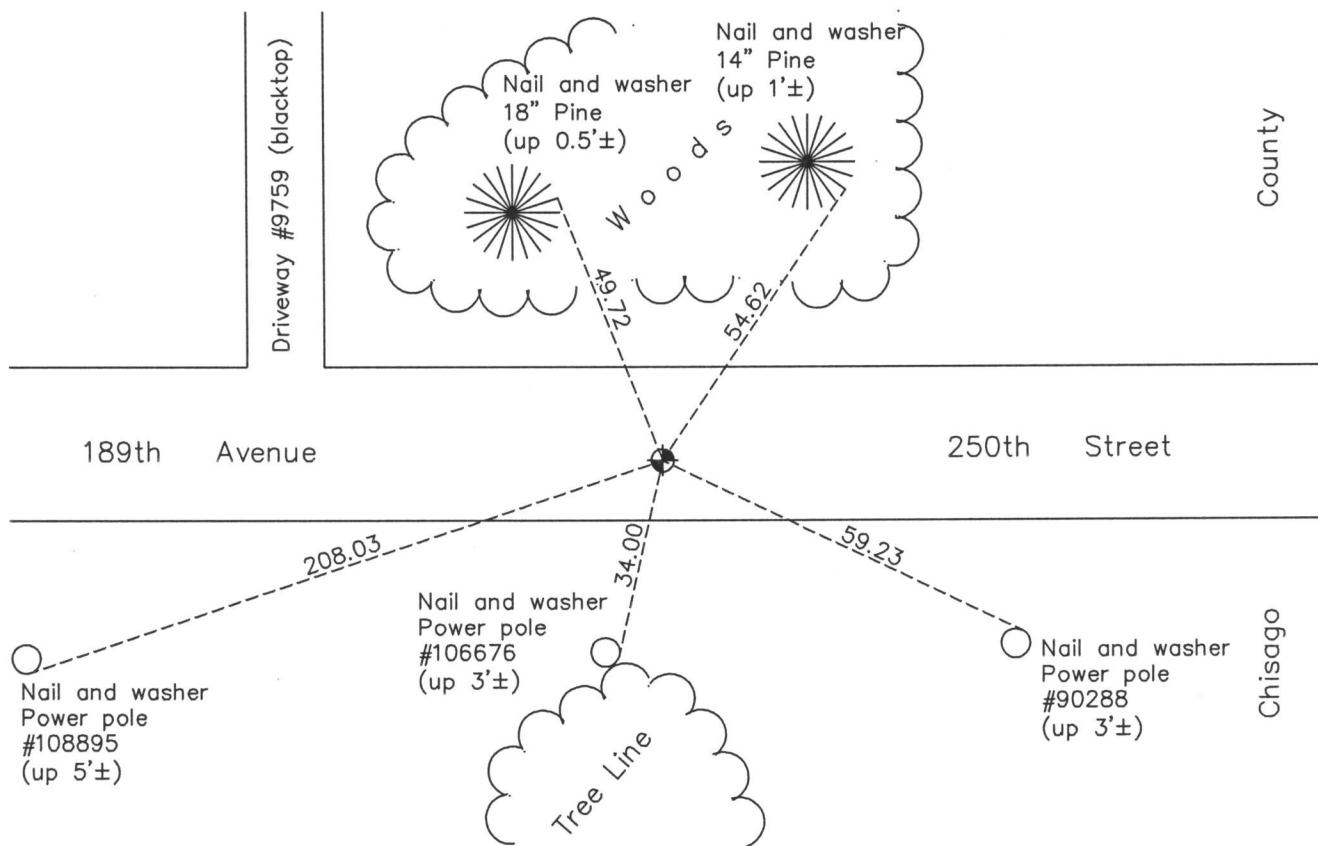
Southeast Corner of Sec. 25 Township 33 Range 22

On the 6th day of July, 1967, the described corner was evidenced by a "Chisago County" cast iron monument

and to perpetuate the location of said corner, at the exact location thereof, a permanent marker was placed consisting of the same "Chisago County" cast iron monument

AND on the 21st day of August, 2014, said permanent marker was found and the ties were updated

Updated reference ties are as shown below.



Revision Date

9/17/15

N.A.D. 1983 Coordinates
(1996 Adjustment)

County Project Coordinates	
Northing	200710.8855
Easting	563555.6617
Date	7/02/03

I hereby certify that this United States public land survey monument record is correct and complete to the best of my knowledge and belief.

Date 9/17/15
 Larry D. Hoium, Anoka County Surveyor
 Minnesota License Number 18165