

CERTIFICATE OF LOCATION OF GOVERNMENT CORNER

County of Anoka

State of Minnesota

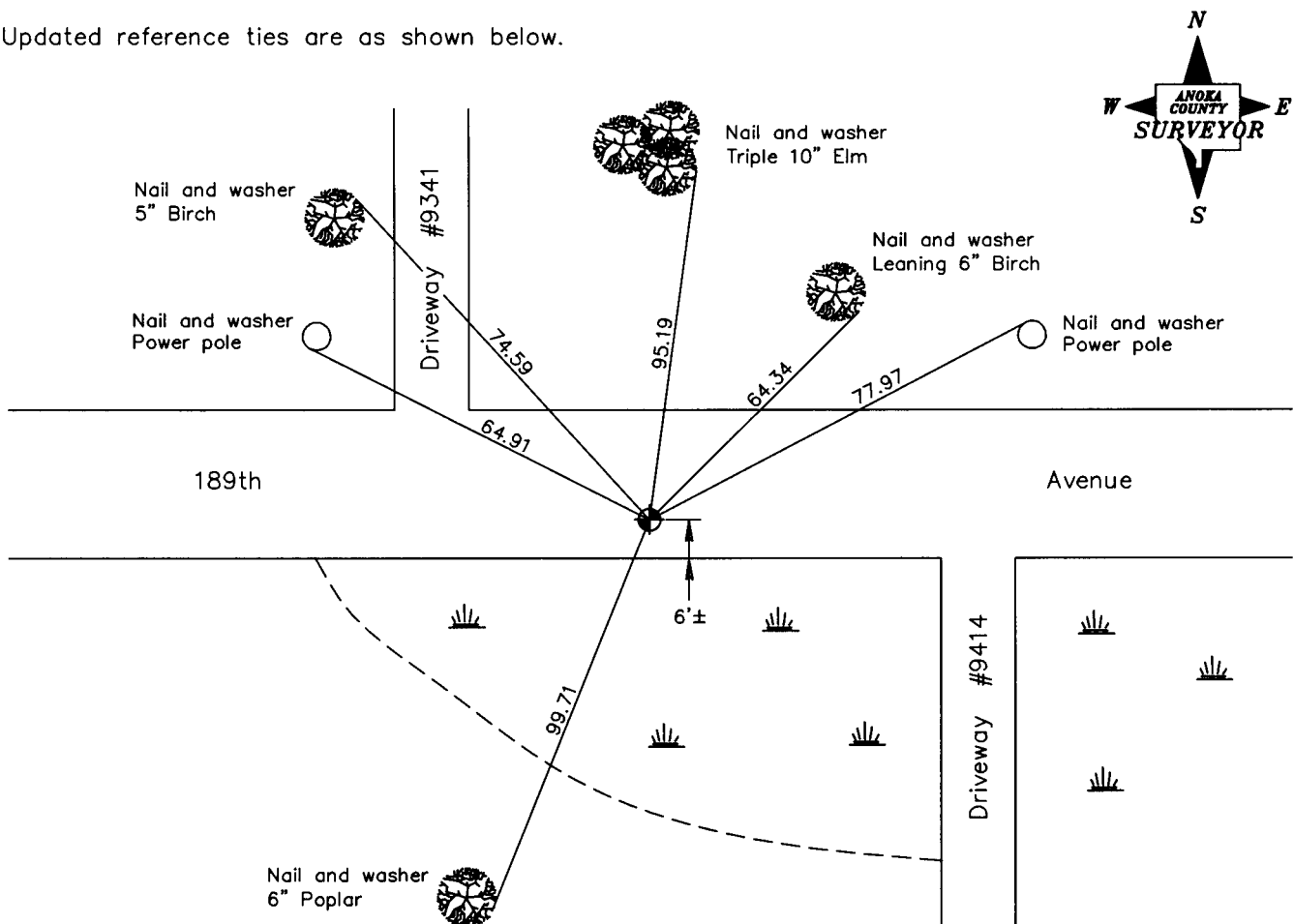
North 1/4 Corner of Sec. 36 Township 33 Range 22

On the 10th day of September, 1968, the described corner was evidenced by a 3/4" iron pipe set by Don Hult

and to perpetuate the location of said corner, at the exact location thereof, a permanent marker was placed consisting of a cast iron monument

AND on the 17th day of August, 2004, said permanent marker was found down 1'± and the ties were updated

Updated reference ties are as shown below.



Revised date

2/13/86
8/14/87
8/17/04

N.A.D. 1983 Coordinates
(1996 Adjustment)

County Project Coordinates	
Northing	<u>200746.9564</u>
Easting	<u>560920.4343</u>
Date	<u>7/02/03</u>

I hereby certify that this United States public land survey monument record is correct and complete to the best of my knowledge and belief.

Larry D. Hoium Date 8/17/04
 _____, Anoka County Surveyor
 Minnesota License Number 18165