

CERTIFICATE OF LOCATION OF GOVERNMENT CORNER

County of Anoka

State of Minnesota

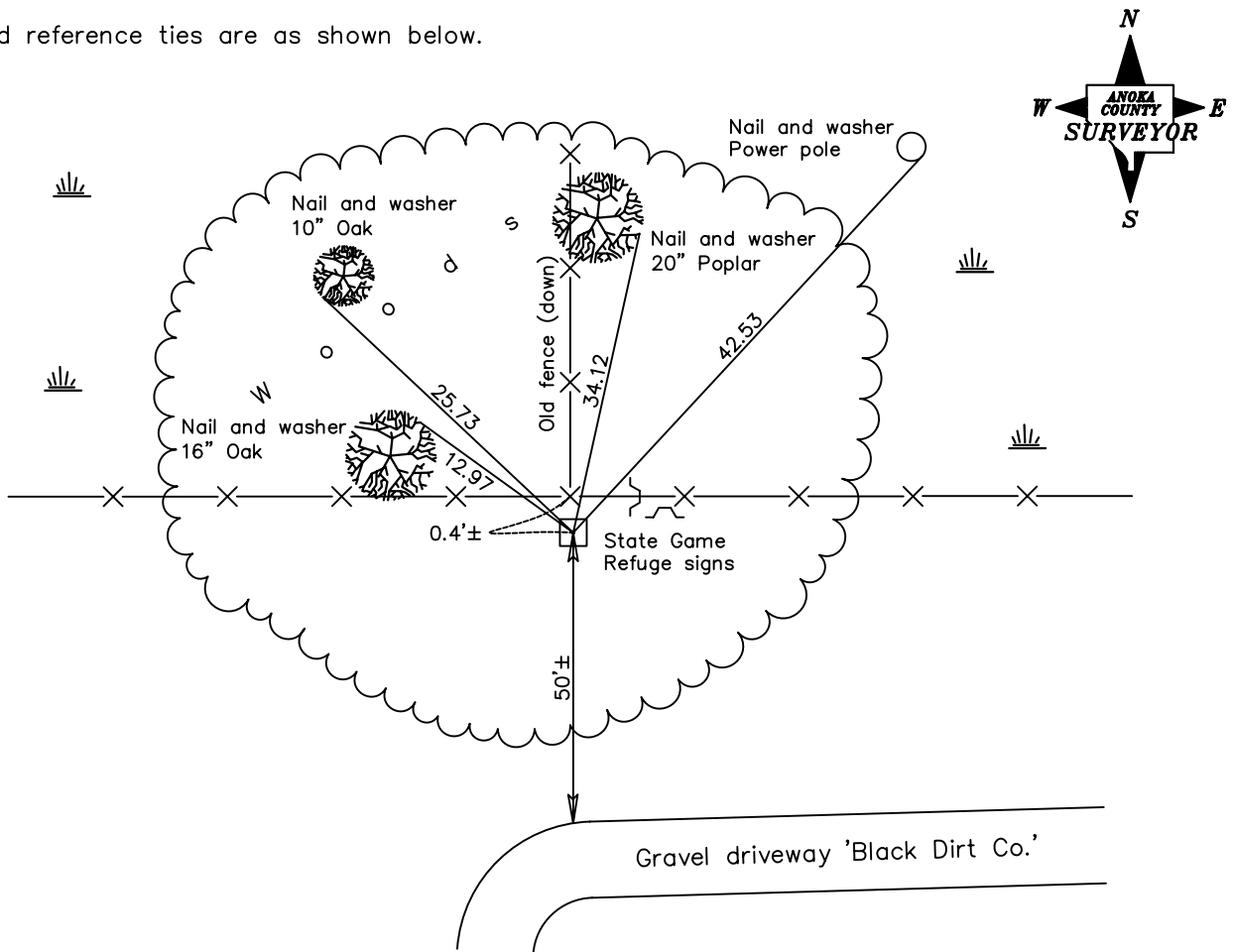
Southwest Corner of Sec. 25 Township 33 Range 22

On the 10th day of September, 1968, the described corner was evidenced by a 4" X 4" concrete monument

and to perpetuate the location of said corner, at the exact location thereof, a permanent marker was placed consisting of the same concrete monument

AND on the ___ day of _____, _____, said permanent marker was _____

Updated reference ties are as shown below.



Revised date

11/02/90

N.A.D. 1983 Coordinates
(1996 Adjustment)

County Project Coordinates	
Northing	200814.0066
Easting	558294.7210
Date	5/18/04

I hereby certify that this United States public land survey monument record is correct and complete to the best of my knowledge and belief.

_____ Date _____
 _____, Anoka County Surveyor
 Minnesota License Number _____