

CERTIFICATE OF LOCATION OF GOVERNMENT CORNER

County of Anoka

State of Minnesota

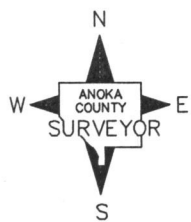
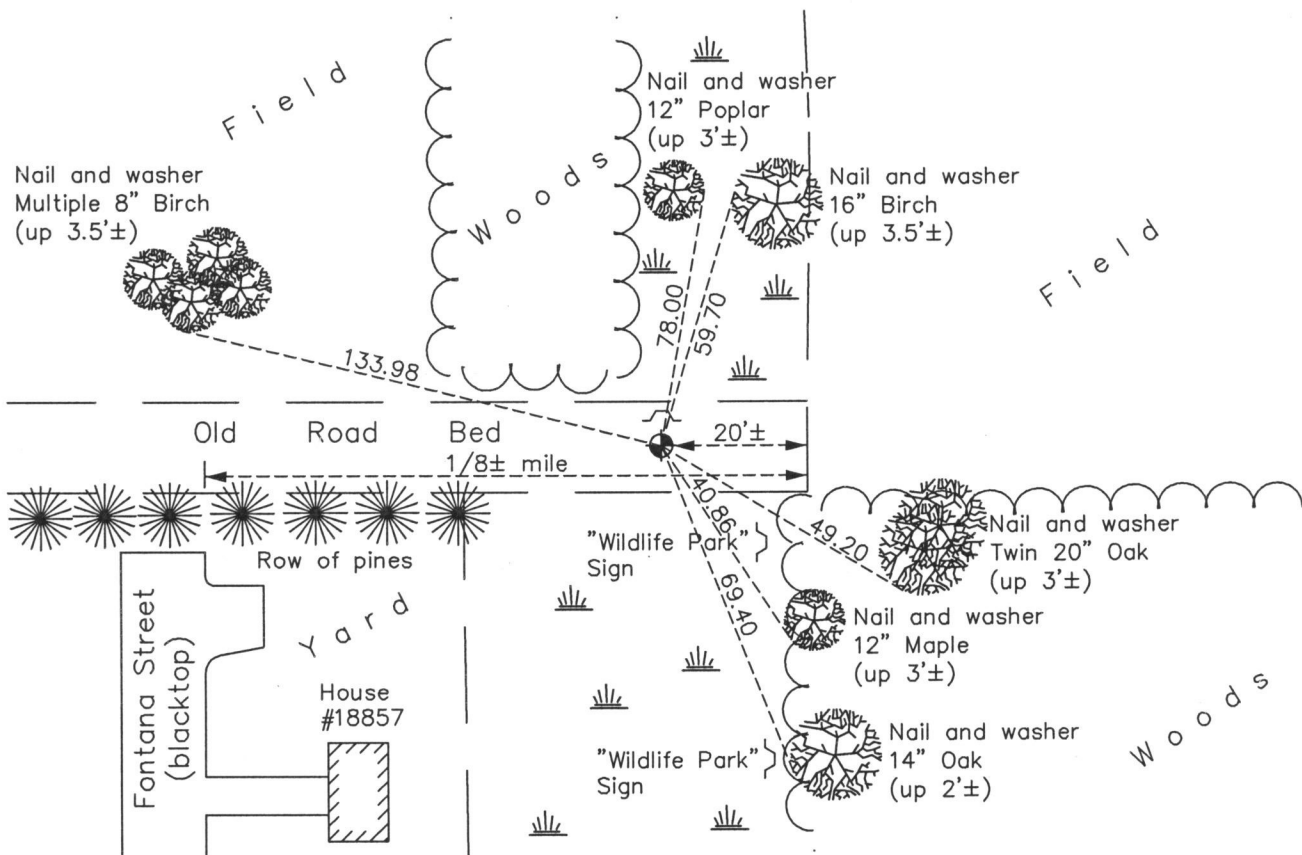
Northeast Corner of Sec. 31 Township 33 Range 22

On the 23rd day of April, 1965, the described corner was evidenced by a broken
concrete monument

and to perpetuate the location of said corner, at the exact location thereof, a permanent marker
 was placed consisting of a cast iron monument with a sign and post on the north side

AND on the 8th day of May, 2014, said permanent marker was found and the ties
were updated

Updated reference ties are as shown below.



Revision Date

9/23/15

N.A.D. 1983 Coordinates
(1996 Adjustment)

County Project Coordinates	
Northing	200835.1833
Easting	537122.2887
Date	5/17/04

I hereby certify that this United States public land survey monument record is correct and complete to the best of my knowledge and belief.

Date 9/23/15
 Larry D. Hoium, Anoka County Surveyor
 Minnesota License Number 18165