

CERTIFICATE OF LOCATION OF GOVERNMENT CORNER

County of Anoka

State of Minnesota

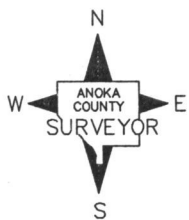
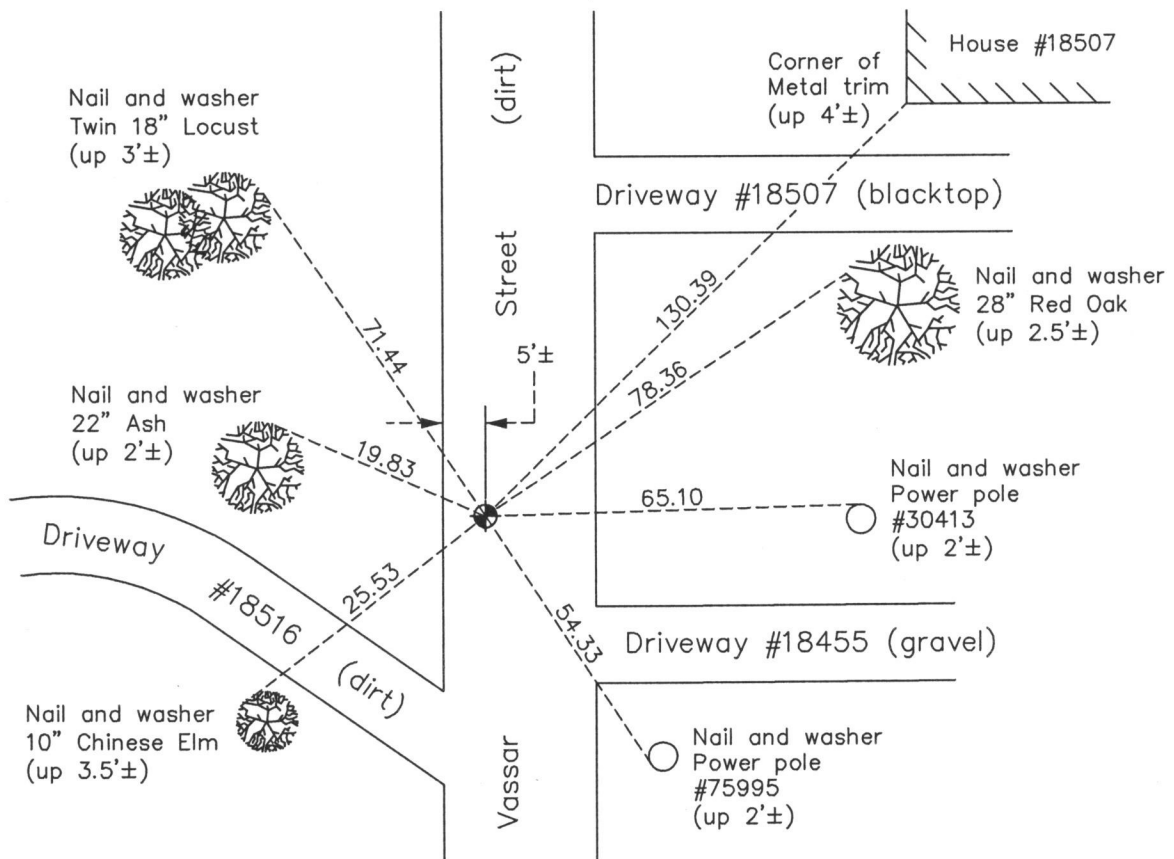
West 1/4 Corner of Sec. 36 Township 33 Range 22

On the ____ day of April, 1968, the described corner was evidenced by a spike

and to perpetuate the location of said corner, at the exact location thereof, a permanent marker was placed consisting of a cast iron monument

AND on the 5th day of September, 2014, said permanent marker was found down 3'± and the ties were updated

Updated reference ties are as shown below.



N.A.D. 1983 Coordinates
(1996 Adjustment)

County Project Coordinates	
Northing	198159.6370
Easting	558338.3559
Date	5/10/05

Revision Date
9/25/15

I hereby certify that this United States public land survey monument record is correct and complete to the best of my knowledge and belief.

Date 9/25/15
 Larry D. Hoium, Anoka County Surveyor
 Minnesota License Number 18165