

CERTIFICATE OF LOCATION OF GOVERNMENT CORNER

County of Anoka

State of Minnesota

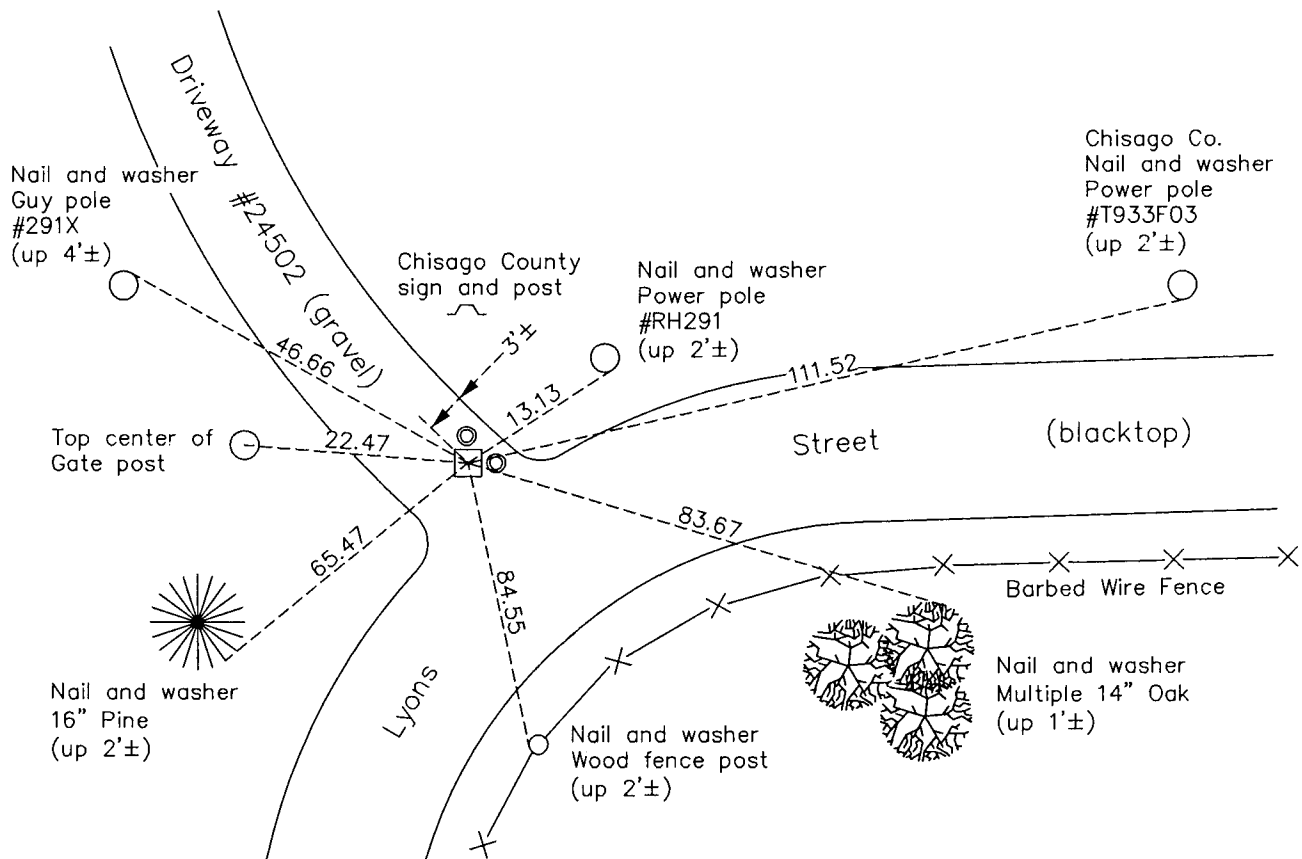
Northeast Corner of Sec. 25 Township 34 Range 22

On the 16th day of April, 1964, the described corner was evidenced by a sandstone monument

and to perpetuate the location of said corner, at the exact location thereof, a permanent marker was placed consisting of the same sandstone monument with a 1/2" iron pipe on the north side (down 1'±)

AND on the 25th day of April, 2014, said permanent marker was found down 1.5'± with 1/2" iron pipes on the north and east sides. The ties were updated.

Updated reference ties are as shown below.



N

S

W E

Revision Date

9/29/15

N.A.D. 1983 Coordinates
(1996 Adjustment)

| County Project Coordinates | |
|----------------------------|-------------|
| Northing | 237364.8326 |
| Easting | 563461.7493 |
| Date | 6/05/03 |

I hereby certify that this United States public land survey monument record is correct and complete to the best of my knowledge and belief.

Larry D. Hoium Date 9/29/15

Larry D. Hoium, Anoka County Surveyor

Minnesota License Number 18165