

CERTIFICATE OF LOCATION OF GOVERNMENT CORNER

County of Anoka

State of Minnesota

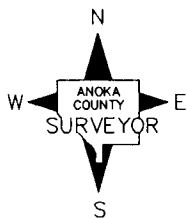
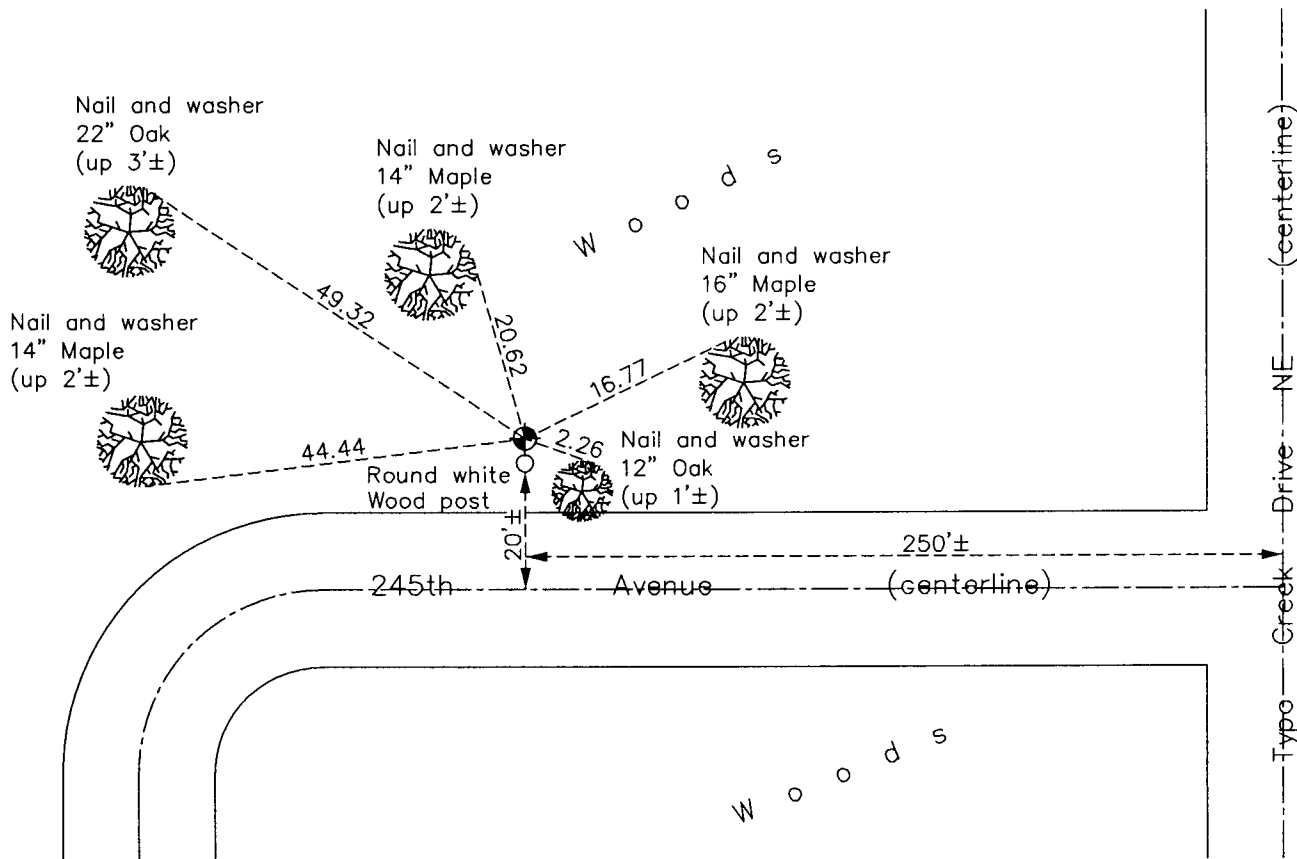
Northwest Corner of Sec. 28 Township 34 Range 22

On the 26th day of April, 1966, the described corner was evidenced by a railroad tie set in 1885

and to perpetuate the location of said corner, at the exact location thereof, a permanent marker was placed consisting of a cast iron monument

AND on the 15th day of January, 2014, said permanent marker was found with a round white wood post next to monument on south side and the ties were updated

Updated reference ties are as shown below.



Revision Date

12/08/15

N.A.D. 1983 Coordinates
(1996 Adjustment)

County Project Coordinates	
Northing	<u>238049.8854</u>
Easting	<u>542161.8478</u>
Date	<u>1/31/05</u>

I hereby certify that this United States public land survey monument record is correct and complete to the best of my knowledge and belief.

Larry D. Hoium Date 12/08/15

Larry D. Hoium, Anoka County Surveyor

Minnesota License Number 18165