

CERTIFICATE OF LOCATION OF GOVERNMENT CORNER

County of Anoka

State of Minnesota

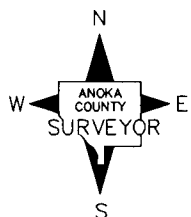
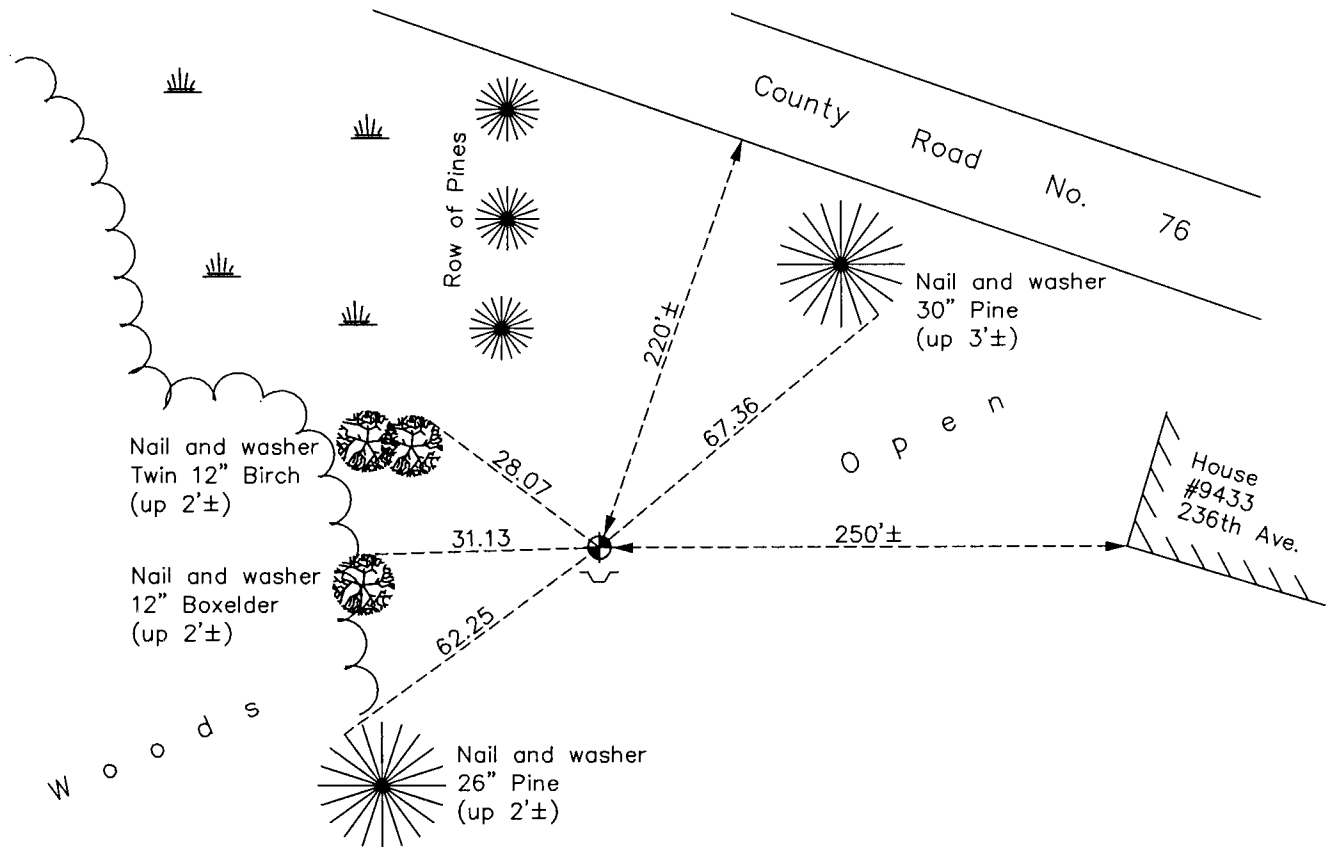
South 1/4 Corner of Sec. 25 Township 34 Range 22

On the 28th day of May, 1975, the described corner was evidenced by area resurvey

and to perpetuate the location of said corner, at the exact location thereof, a permanent marker was placed consisting of a cast iron monument

AND on the 17th day of January, 2014, said permanent marker was found down 0.3'± and the ties were updated. Set sign and post on south side of monument on August 18, 2014.

Updated reference ties are as shown below.



Revision Date
12/18/15

N.A.D. 1983 Coordinates
(1996 Adjustment)

County Project Coordinates	
Northing	<u>232110.4403</u>
Easting	<u>560972.0925</u>
Date	<u>6/09/03</u>

I hereby certify that this United States public land survey monument record is correct and complete to the best of my knowledge and belief.

Larry D. Hoium Date 12/18/15

Larry D. Hoium, Anoka County Surveyor

Minnesota License Number 18165