

CERTIFICATE OF LOCATION OF GOVERNMENT CORNER

County of Anoka

State of Minnesota

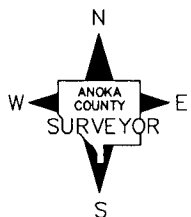
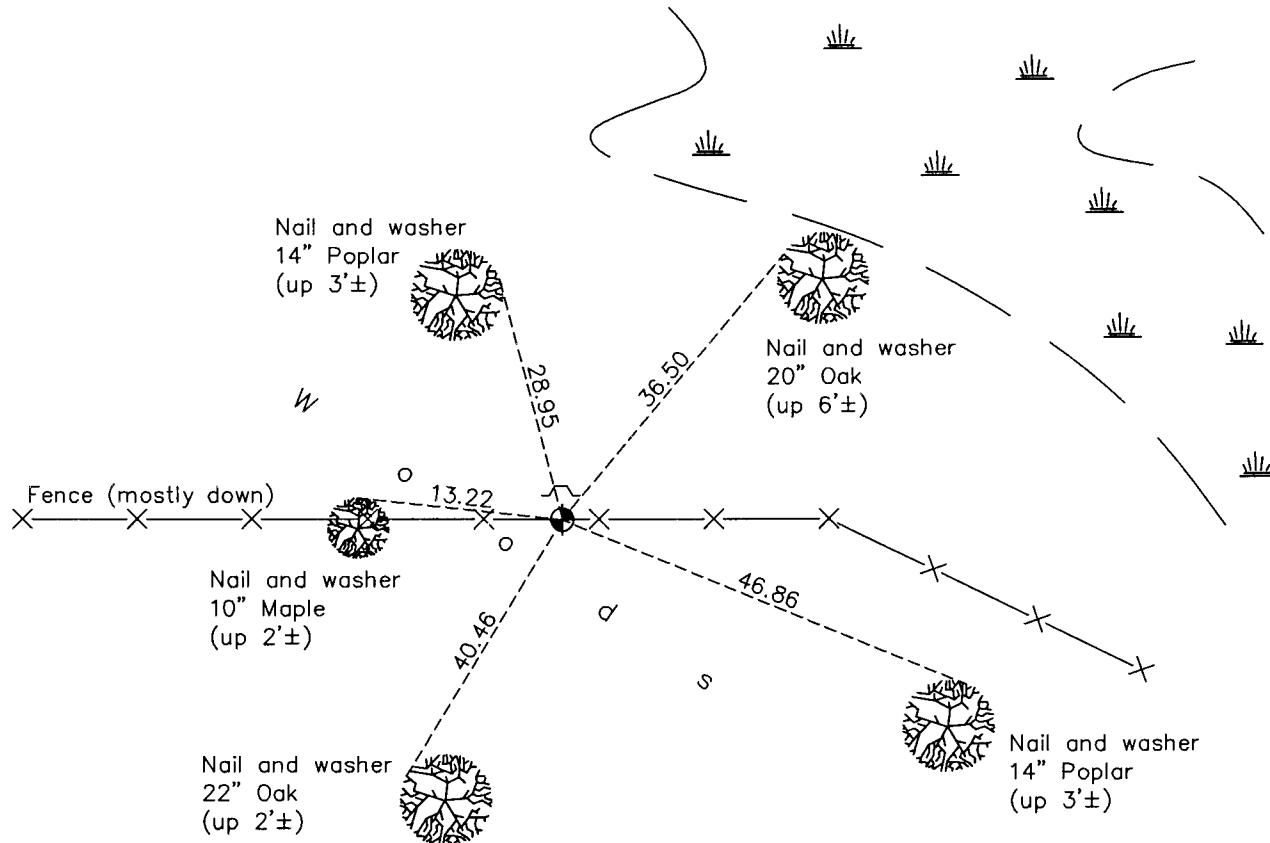
Southwest Corner of Sec. 26 Township 34 Range 22

On the 4th day of February, 1963, the described corner was evidenced by a cast iron monument

and to perpetuate the location of said corner, at the exact location thereof, a permanent marker was placed consisting of the same cast iron monument

AND on the 12th day of February, 2014, said permanent marker was found up 0.2'± with a sign and post on the north side and the ties were updated

Updated reference ties are as shown below.



Revision Date

12/18/15

N.A.D. 1983 Coordinates
(1996 Adjustment)

County Project Coordinates	
Northing	232318.4636
Easting	553062.7411
Date	1/26/04

I hereby certify that this United States public land survey monument record is correct and complete to the best of my knowledge and belief.

Larry D. Hoium Date 12/18/15

Larry D. Hoium, Anoka County Surveyor

Minnesota License Number 18165