

CERTIFICATE OF LOCATION OF GOVERNMENT CORNER

County of Anoka

State of Minnesota

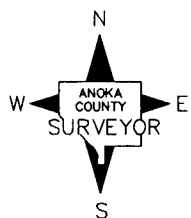
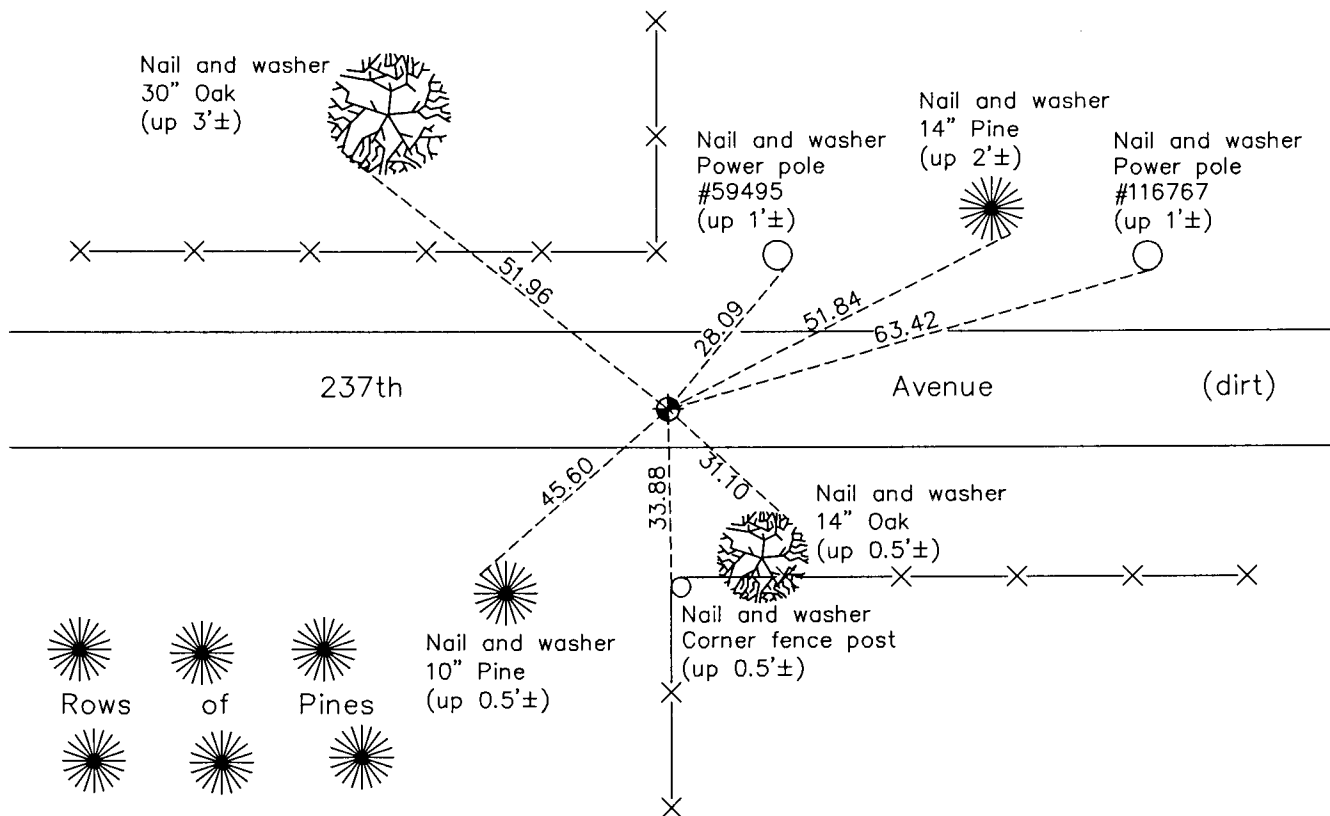
South 1/4 Corner of Sec. 28 Township 34 Range 22

On the 28th day of March, 1966, the described corner was evidenced by a 1" X 5'
square steel rod

and to perpetuate the location of said corner, at the exact location thereof, a permanent marker was placed consisting of a cast iron monument

AND on the 13th day of February, 2014, said permanent marker was found and the ties were updated

Updated reference ties are as shown below.



Revision Date

12/21/15

N.A.D. 1983 Coordinates
(1996 Adjustment)

County Project Coordinates	
Northing	<u>232634.4398</u>
Easting	<u>545109.4982</u>
Date	<u>6/09/03</u>

I hereby certify that this United States public land survey monument record is correct and complete to the best of my knowledge and belief.

Larry D. Hoium Date 12/21/15

Larry D. Hoium, Anoka County Surveyor

Minnesota License Number 18165