

CERTIFICATE OF LOCATION OF GOVERNMENT CORNER

County of Anoka

State of Minnesota

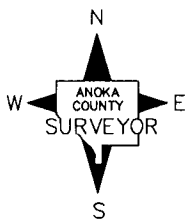
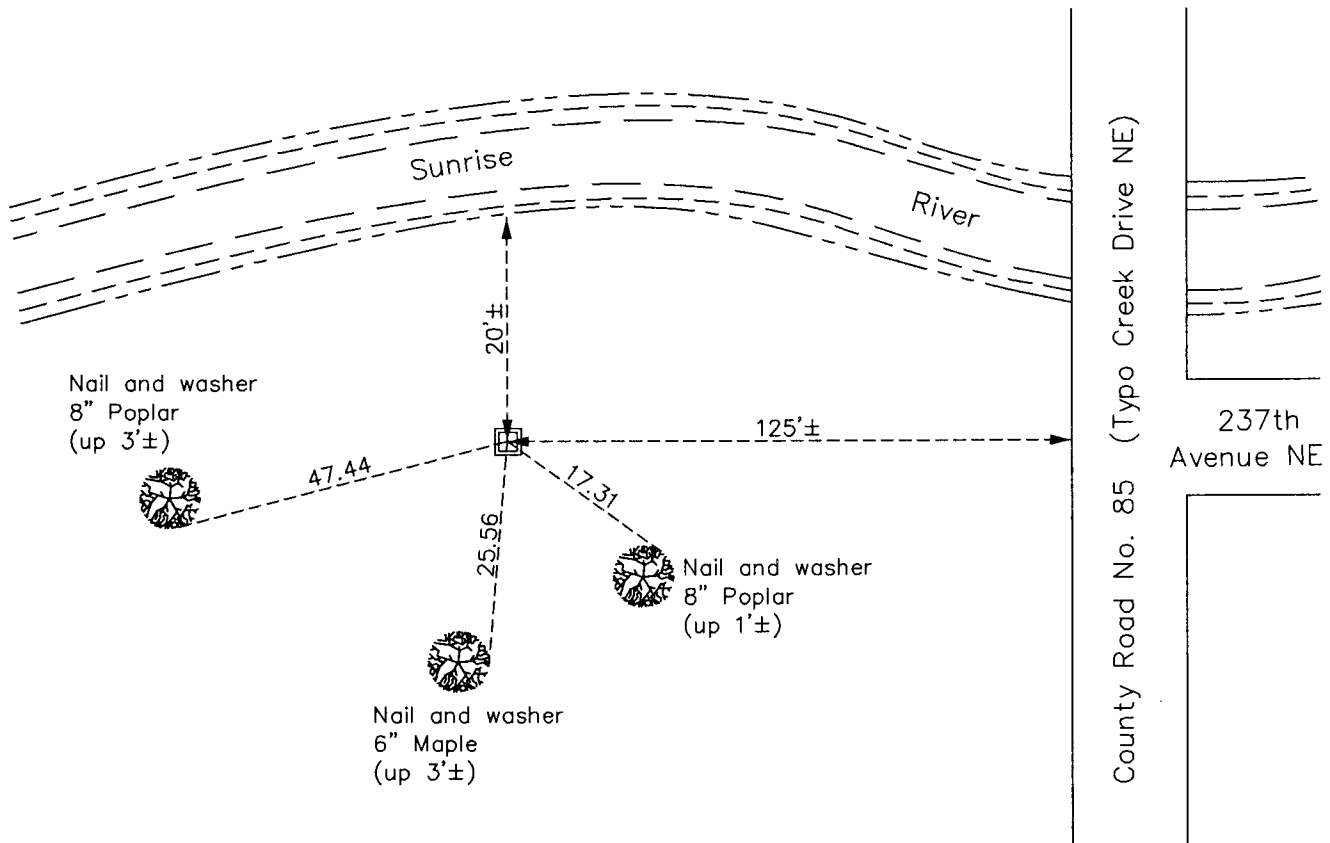
Northeast Corner of Sec. 32 Township 34 Range 22

On the 1st day of October, 1973, the described corner was evidenced by area resurvey

and to perpetuate the location of said corner, at the exact location thereof, a permanent marker was placed consisting of a red and white iron pipe

AND on the 4th day of September, 2014, said permanent marker was replaced with an 2"X8' sq. steel Telspar mont. set up 1'± with "County Surveyor" cap and punchmark. Ties were updated.

Updated reference ties are as shown below.



Revision Date

12/28/15

N.A.D. 1983 Coordinates
(1996 Adjustment)

County Project Coordinates	
Northing	<u>232786.8504</u>
Easting	<u>542467.8768</u>
Date	<u>11/03/03</u>

I hereby certify that this United States public land survey monument record is correct and complete to the best of my knowledge and belief.

Larry D. Hoium Date 12/28/15

Larry D. Hoium, Anoka County Surveyor

Minnesota License Number 18165