

CERTIFICATE OF LOCATION OF GOVERNMENT CORNER

County of Anoka

State of Minnesota

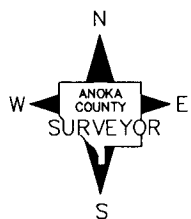
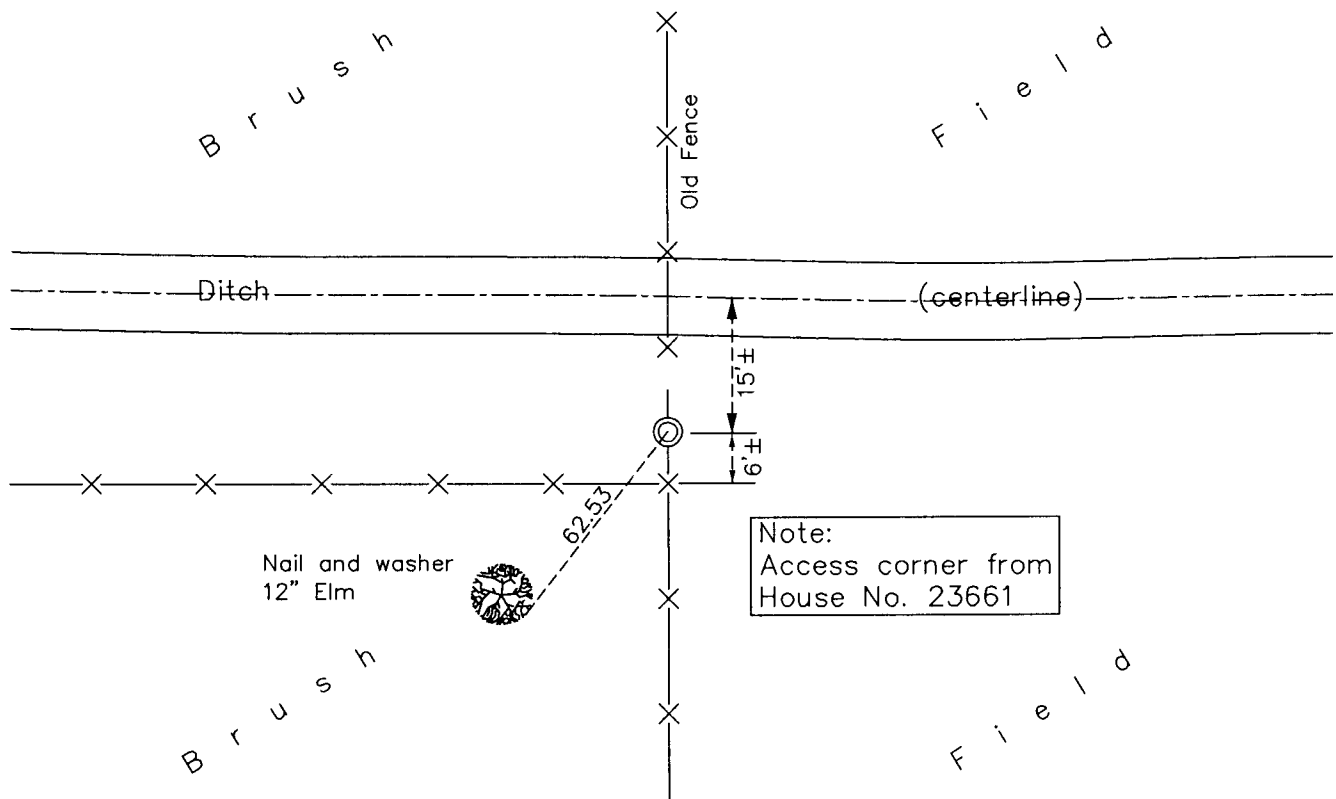
Northeast Corner of Sec. 31 Township 34 Range 22

On the 22nd day of June, 1976, the described corner was evidenced by a 1/2" iron pipe

and to perpetuate the location of said corner, at the exact location thereof, a permanent marker was placed consisting of a 3" red and white iron pipe

AND on the 26th day of August, 2014, said permanent marker was found in good condition up 4'± but loose & leaning NE. Straightened mont. & drove down to 2'± above ground. Ties updated.

Updated reference ties are as shown below.



Revision Date

12/28/15

N.A.D. 1983 Coordinates
(1996 Adjustment)

County Project Coordinates	
Northing	<u>232731.9222</u>
Easting	<u>537224.8800</u>
Date	<u>2/17/04</u>

I hereby certify that this United States public land survey monument record is correct and complete to the best of my knowledge and belief.

Larty D. Hoium Date 12/28/15

Larty D. Hoium, Anoka County Surveyor

Minnesota License Number 18165