

CERTIFICATE OF LOCATION OF GOVERNMENT CORNER

County of Anoka

State of Minnesota

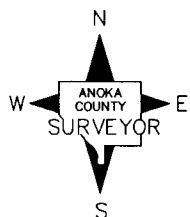
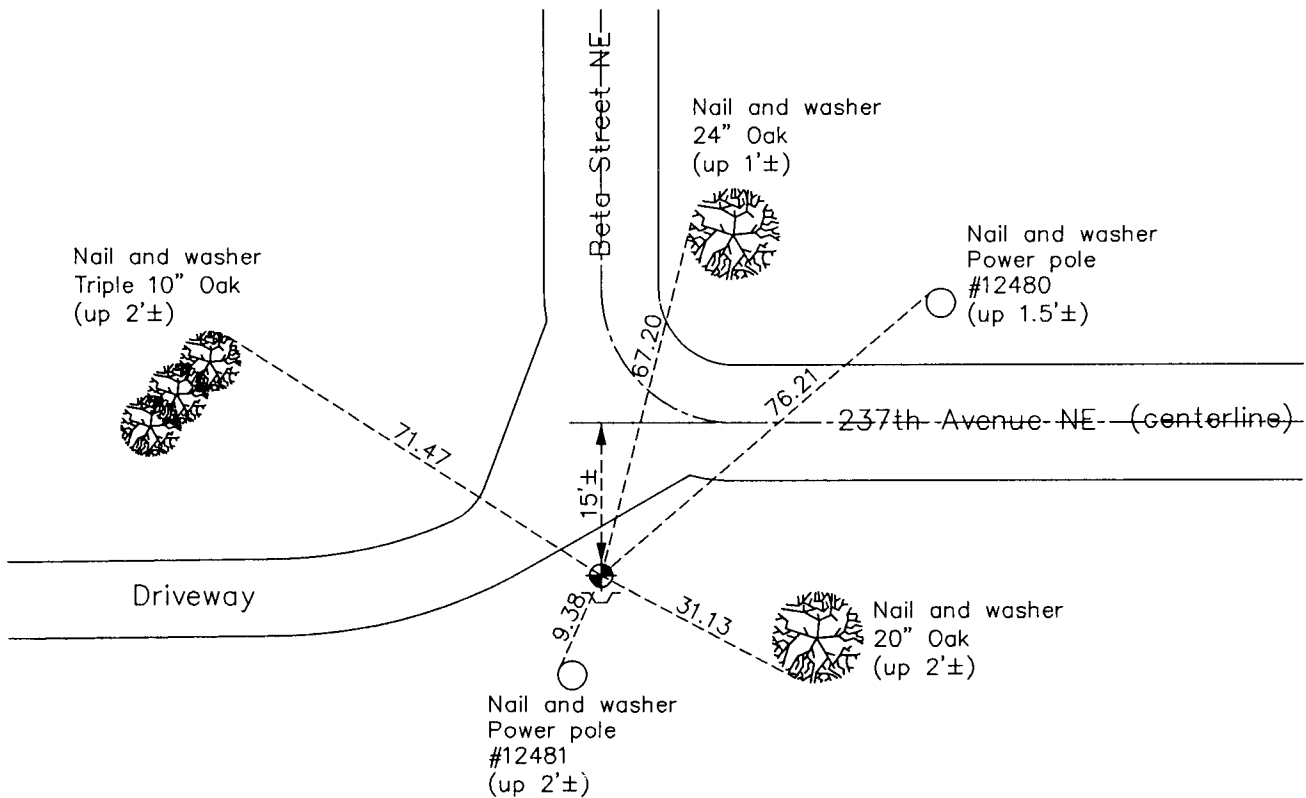
North 1/4 Corner of Sec. 31 Township 34 Range 22

On the 19th day of November, 1971, the described corner was evidenced by an iron pipe

and to perpetuate the location of said corner, at the exact location thereof, a permanent marker was placed consisting of a cast iron monument

AND on the 16th day of January, 2014, said permanent marker was found with a post on the south side and the ties were updated. Attached sign to post on August 18, 2014.

Updated reference ties are as shown below.



Revision Date

12/22/15

N.A.D. 1983 Coordinates
(1996 Adjustment)

County Project Coordinates
Northing <u>232749.6913</u>
Easting <u>534576.5763</u>
Date <u>6/04/03</u>

I hereby certify that this United States public land survey monument record is correct and complete to the best of my knowledge and belief.

Larry D. Hoium Date 12/22/15

Larry D. Hoium, Anoka County Surveyor

Minnesota License Number 18165