

# CERTIFICATE OF LOCATION OF GOVERNMENT CORNER

County of Anoka

State of Minnesota

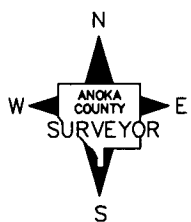
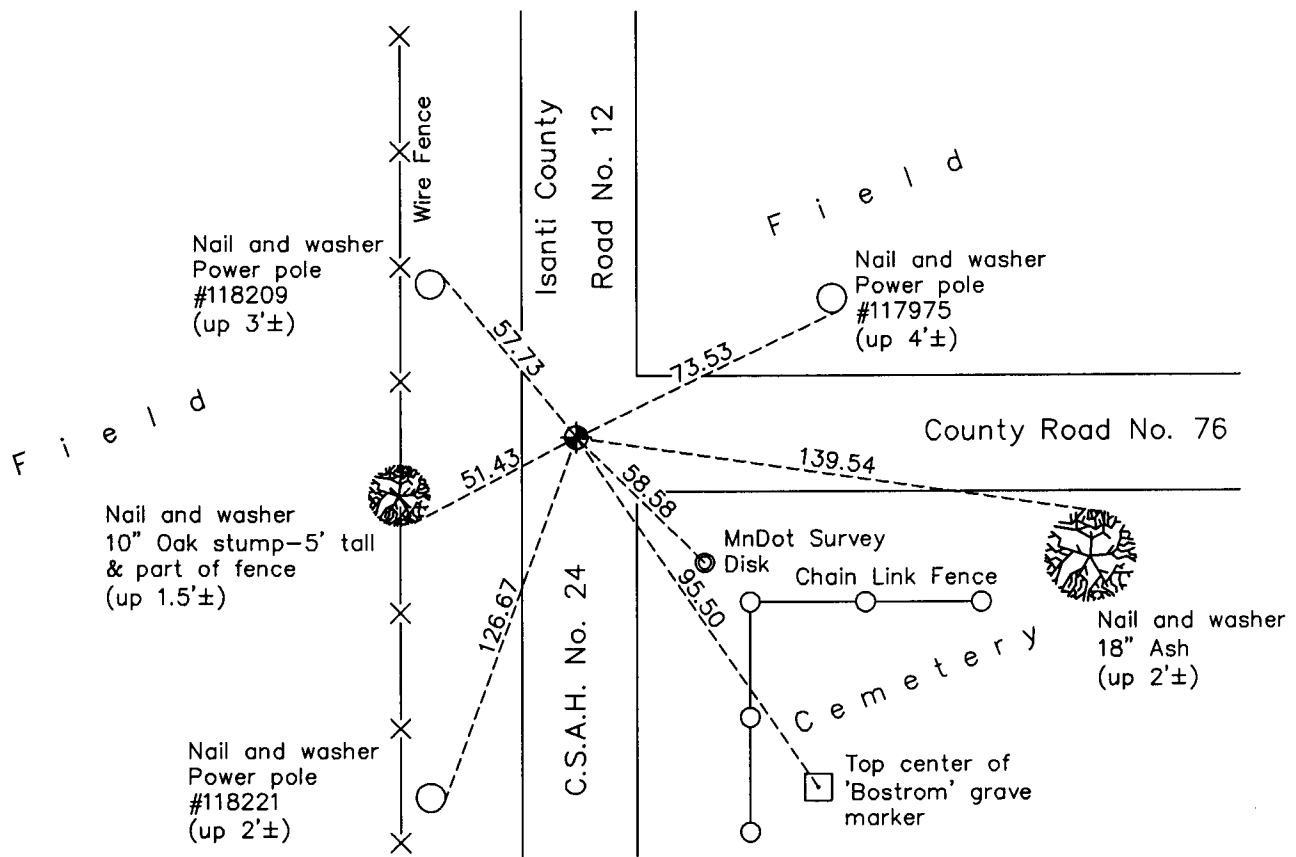
## Northeast Corner of Sec. 27 Township 34 Range 23

On the 28th day of June, 1962, the described corner was evidenced by a sandstone monument located using Highway Department ties

and to perpetuate the location of said corner, at the exact location thereof, a permanent marker was placed consisting of a cast iron monument set on top of the sandstone monument

AND on the 1st day of August, 2012, said permanent marker was found down 0.5'± and at intersection of centerlines. Updated ties. Raised CIM to flush with surface on August 3, 2012

Updated reference ties are as shown below.



Revision Date

3/14/13

N.A.D. 1983 Coordinates  
(1996 Adjustment)

County Project Coordinates

Northing 238140.9298

Easting 521362.3756

Date 5/21/02

I hereby certify that this United States public land survey monument record is correct and complete to the best of my knowledge and belief.

*Larry D. Hoium* Date 3/14/13

Larry D. Hoium, Anoka County Surveyor

Minnesota License Number 18165