

CERTIFICATE OF LOCATION OF GOVERNMENT CORNER

County of Anoka

State of Minnesota

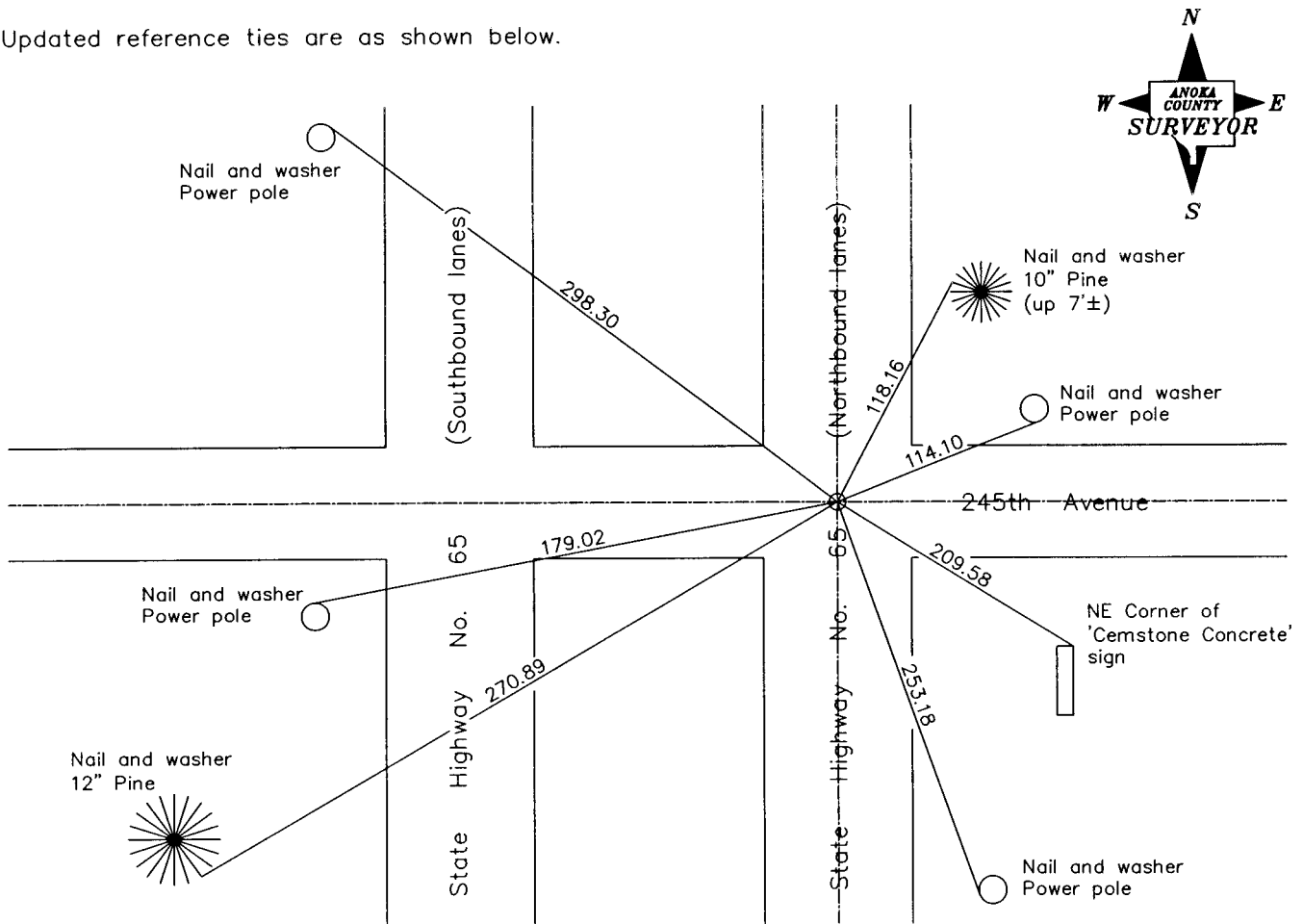
North 1/4 Corner of Sec. 29 Township 34 Range 23

On the 22nd day of August, 1967, the described corner was evidenced by a P.K. nail set by N.C. Hoium on May 31, 1960

and to perpetuate the location of said corner, at the exact location thereof, a permanent marker was placed consisting of a 1/2" iron pipe

AND on the 21st day of September, 2006, said permanent marker was not found and a 1/2" iron pipe was set using area resurvey

Updated reference ties are as shown below.



Revised date
10/12/90
Reset 9/21/06

N.A.D. 1983 Coordinates (1996 Adjustment)	
County Project Coordinates	
Northing	<u>238027.4856</u>
Easting	<u>508095.6808</u>
Date	<u>9/21/06</u>

I hereby certify that this United States public land survey monument record is correct and complete to the best of my knowledge and belief.

Larry D. Hoium Date 7/5/07

Larry D. Hoium, Anoka County Surveyor

Minnesota License Number 18165