

CERTIFICATE OF LOCATION OF GOVERNMENT CORNER

County of Anoka

State of Minnesota

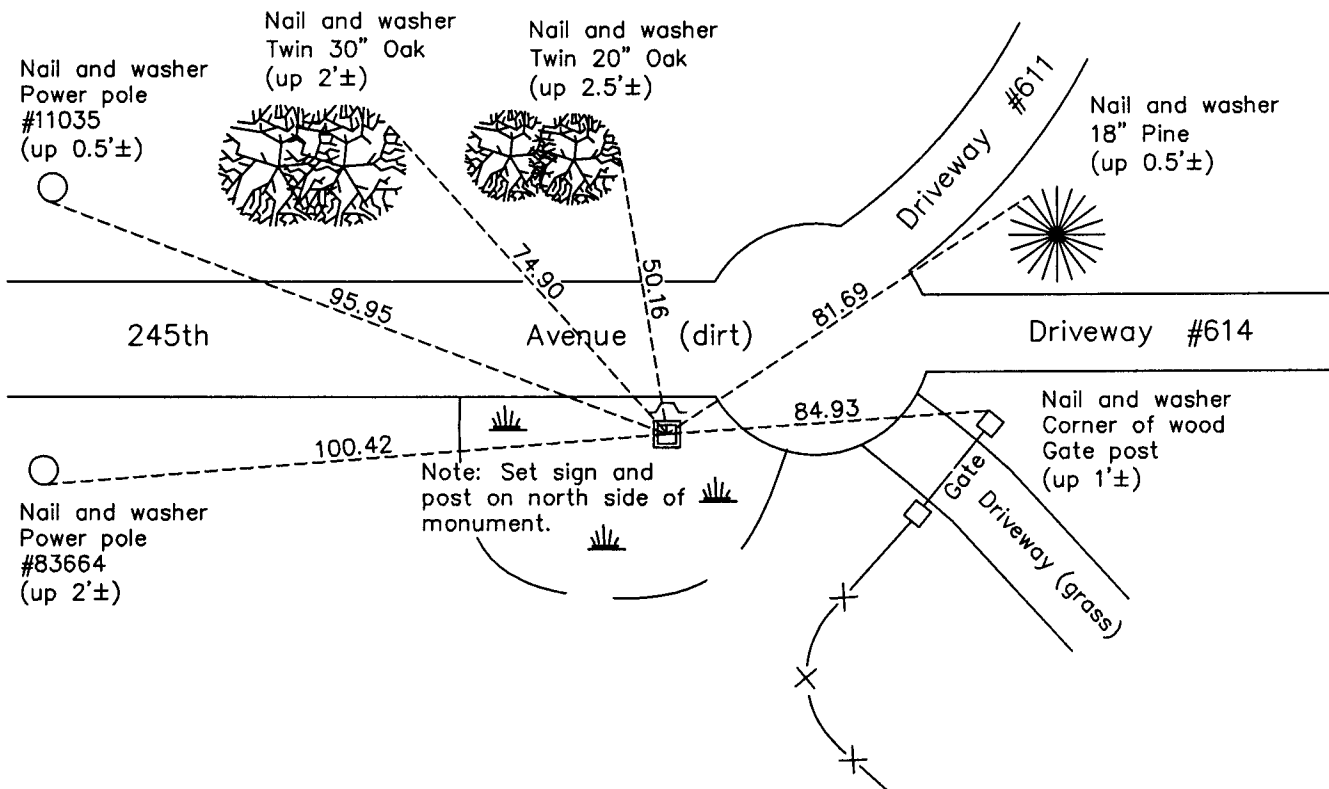
North 1/4 Corner of Sec. 30 Township 34 Range 23

On the 27th day of December, 1966, the described corner was evidenced by area resurvey

and to perpetuate the location of said corner, at the exact location thereof, a permanent marker was placed consisting of a red and white iron pipe with a sign attached

AND on the 16th day of January, 2013, said permanent marker was found leaning SW'ly
Set red & white 2" sq. Telspar mont. w/ 'County Surveyor' cap & punchmark up 1'±, updated ties.

Updated reference ties are as shown below.



N

 W ANOKA COUNTY SURVEYOR E
 S

Revision Date
1/29/13

N.A.D. 1983 Coordinates
(1996 Adjustment)

County Project Coordinates	
Northing	237989.2940
Easting	502784.7652
Date	5/15/02

I hereby certify that this United States public land survey monument record is correct and complete to the best of my knowledge and belief.

Larry D. Hoium Date 1/29/13

Larry D. Hoium, Anoka County Surveyor
 Minnesota License Number 18165